

Totalizers electromechanic

Impulse counters adding, modular system

Display 6- or 8-digits, with/without reset button

F 304, F 314, F 324, F 364



F 304 - Socket box



F 314 - Front panel with screw mount



F 324 - Front panel with spring clip

Features

- Impulse counter
- Adding
- Display 6- or 8-digits
- With or without reset button
- Socket housing

Technical data - electrical ratings

Voltage supply	24/110 VAC ±10 % (50/60 Hz) 230 VAC +6/-10 % (50/60 Hz) 24 VDC ±10 %
Residual ripple	<48 %
Nominal frequency	50 / 60 Hz
Power consumption	2.2 W, 2.4 VA
Pulse ratio	1:1
Service life	100 million impulses
Standard DIN EN 61010-1	Protection class II Overvoltage category II Pollution degree 2
Emitted interference	DIN EN 61000-6-4
Interference immunity	DIN EN 61000-6-2

Technical data - mechanical design

Display	White numbers on black
Digit height	4.5 mm
Count mode	1 impulse = 1 count
Step-by-step switching	Adding in 2 half steps
Zero setting	Manual by reset button
Ambient temperature	0...+45 °C
Storage temperature	-20...+70 °C
Relative humidity	80 % non-condensing
Protection DIN EN 60529	IP 41
Connection	Soldering pins (flat)
Weight approx.	100 g
Material	Housing: Noryl PPO, black

Totalizers electromechanic

Impulse counters adding, modular system

Display 6- or 8-digits, with/without reset button

F 304, F 314, F 324, F 364

Technical data - mechanical design

F 304

Number of digits	6-digits with reset button 8-digits without reset button
Measuring range	999 999 and 99 999 999
Housing type	Socket box
Mounting	Socket box
Dimensions W x H x L	50 x 25 x 85.8 mm
Cutout dimensions	50 x 25 mm
Mounting depth	85.9 mm

F 314

Number of digits	6-digits with reset button 8-digits without reset button
Measuring range	999 999 and 99 999 999
Housing type	Built-in housing
Mounting	Front panel with 2 screws
Dimensions W x H x L	60 x 50 x 61 mm
Cutout dimensions	51 x 26 mm
Mounting depth	77.5 mm

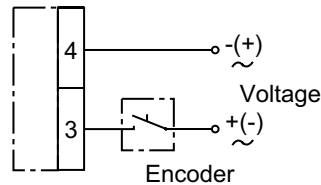
F 324

Number of digits	6-digits with reset button 8-digits without reset button
Measuring range	999 999 and 99 999 999
Housing type	Built-in housing
Mounting	Front panel with spring clips
Dimensions W x H x L	53.2 x 28.2 x 61 mm
Cutout dimensions	51 x 26 mm
Mounting depth	77.5 mm

F 364

Number of digits	6-digits with reset button
Measuring range	999 999
Housing type	Built-in housing
Mounting	Front panel with 4 screws
Dimensions W x H x L	66.5 x 37 x 75 mm
Cutout dimensions	51 x 26 mm
Mounting depth	72 mm

Connection diagram



Trigger level

Max. counting speed 10 pulses/s

Voltage	24/110 VAC $\pm 10\%$ 230 VAC $+6/-10\%$
Power	2.4 VA
Min. pulse duration	50 ms
Min. pulse interval	50 ms
Switch on time (at 25 °C)	100 %

Max. counting speed 20 pulses/s

Voltage	24 VDC $\pm 10\%$
Power	2.2 W
Min. pulse duration	25 ms
Min. pulse interval	25 ms
Switch on time (at 25 °C)	100 %

Accessories

Front panels for F 304

Z 100.01A	Front panel with transparent protective cover, for socket box 50 x 25 mm
-----------	--

Front frames for F 304

Z 105.02A	Front frame with cylinder lock provided on transparent cover
Z 107.01A	Front frame, insertion cutout 50 x 25 mm

Totalizers electromechanic

Impulse counters adding, modular system

Display 6- or 8-digits, with/without reset button

F 304, F 314, F 324, F 364

Part number

Socket box

F 304.

			Display
			C 8-digits 99 999 999
			B 6-digits 999 999
			Voltage
			A3 24 VDC
			A5 24 VAC
			A8 110 VAC
			A9 230 VAC
			Zero setting
800B			Without reset button
650A			With reset button

Front panel with screw mount

F 314.

			Display
			C 8-digits 99 999 999
			B 6-digits 999 999
			Voltage
			A3 24 VDC
			A5 24 VAC
			A8 110 VAC
			A9 230 VAC
			Zero setting
800B			Without reset button
650A			With reset button

Front panel with spring clips mount

F 324.

			Display
			C 8-digits 99 999 999
			B 6-digits 999 999
			Voltage
			A3 24 VDC
			A5 24 VAC
			A8 110 VAC
			A9 230 VAC
			Zero setting
800B			Without reset button
650A			With reset button

Front panel with screw mount

F 364. 650A B

			Display
			B 6-digits 999 999
			Voltage
			A3 24 VDC
			A5 24 VAC
			A8 110 VAC
			A9 230 VAC
			Zero setting
650A			With reset button

Totalizers electromechanic

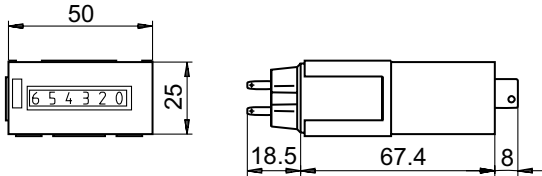
Impulse counters adding, modular system

Display 6- or 8-digits, with/without reset button

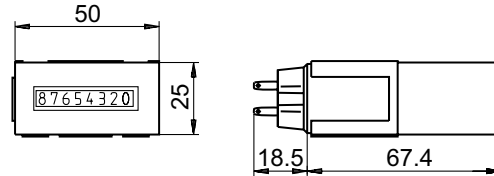
F 304, F 314, F 324, F 364

Dimensions

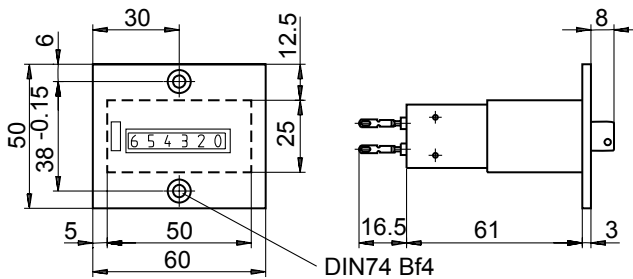
F 304 with reset button, 6-digits



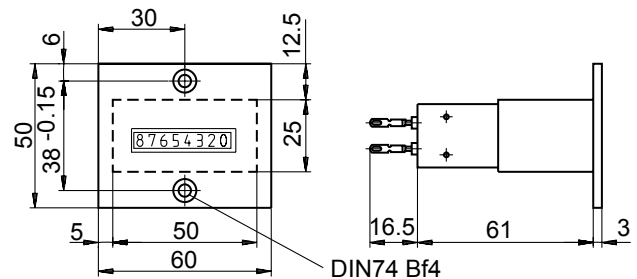
F 304 without reset button, 8-digits



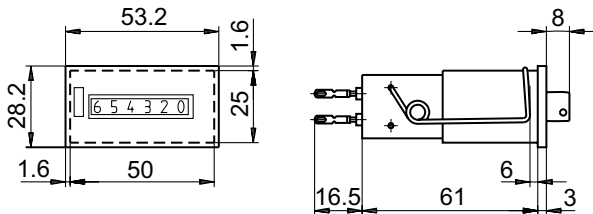
F 314 with reset button, 6-digits



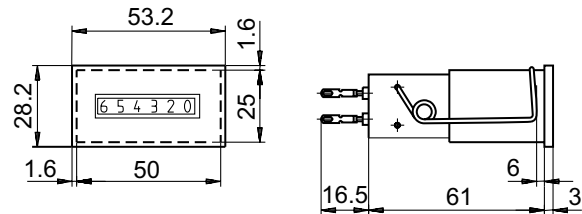
F 314 without reset button, 8-digits



F 324 with reset button, 6-digits



F 324 without reset button, 8-digits



F 364 with reset button, 6-digits

