

# Totalizers electromechanic

## Impulse counters, front panel mount

### Display 6- or 8-digits, with/without reset button

F 504, F 514, F 524



F 504 - Socket box



F 514 - Front panel with screw mount



F 524 - Front panel with spring clips mount

#### Features

- Impulse counter
- Adding
- Display 6- or 8-digits
- With or without reset button / key reset

#### Technical data - electrical ratings

Voltage supply	24/110 VAC ±10 % (50/60 Hz) 230 VAC +6/-10 % (50/60 Hz) 24 VDC ±10 %
Residual ripple	<48 %
Nominal frequency	50 / 60 Hz
Power consumption	2 W, 3 VA
Pulse ratio	1:1
Service life	VDC - 100 million impulses VAC - 50 million impulses
Standard DIN EN 61010-1	Protection class II Overvoltage category II Pollution degree 2
Emitted interference	DIN EN 61000-6-4
Interference immunity	DIN EN 61000-6-2

#### Technical data - mechanical design

Display	White numbers on black
Digit height	4.5 mm
Count mode	1 impulse = 1 count
Step-by-step switching	Adding in 2 half steps
Zero setting	Manual by reset button or detachable key
Ambient temperature	0...+45 °C
Storage temperature	-20...+70 °C
Relative humidity	80 % non-condensing
Protection DIN EN 60529	IP 41
Connection	Soldering pins (flat)
Weight approx.	100 g
Material	Housing: Noryl PPO, black

# Totalizers electromechanic

## Impulse counters, front panel mount

### Display 6- or 8-digits, with/without reset button

F 504, F 514, F 524

#### Technical data - mechanical design

##### F 504

Number of digits	6-digits with/without reset button 8-digits without reset button
Measuring range	999 999 and 99 999 999
Housing type	Socket box
Mounting	Socket box
Dimensions W x H x L	50 x 25 x 85.8 mm
Cutout dimensions	50 x 25 mm
Mounting depth	85.8 mm

##### F 514

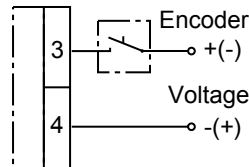
Number of digits	6-digits
Measuring range	999 999
Housing type	Built-in housing
Mounting	Front panel with 2 screws
Dimensions W x H x L	60 x 37.5 x 61.3 mm
Cutout dimensions	51 x 26 mm
Mounting depth	77.8 mm

##### F 524

Number of digits	6-digits with/without reset button 8-digits without reset button
Measuring range	999 999 and 99 999 999
Housing type	Built-in housing
Mounting	Front panel with spring clips
Dimensions W x H x L	53.2 x 28.2 x 61.3 mm
Cutout dimensions	51 x 26 mm
Mounting depth	77.8 mm

#### Connection diagram

Standard connection



#### Trigger level

##### Max. counting speed 10 pulses/s

Voltage	24/110 VAC $\pm 10\%$ 230 VAC $+6/-10\%$
Power	3 VA
Min. pulse duration	50 ms
Min. pulse interval	50 ms
Switch on time (at 25 °C)	100 %

##### Max. counting speed 20 pulses/s

Voltage	24 VDC $\pm 10\%$
Power	2 W
Min. pulse duration	25 ms
Min. pulse interval	25 ms
Switch on time (at 25 °C)	100 %

#### Accessories

##### Front panels for F 504

Z 100.01A	Front panel with transparent protective cover, for socket box 50 x 25 mm
-----------	--

##### Front frames for F 504

Z 105.02A	Front frame with cylinder lock provided on transparent cover
Z 107.01A	Front frame, insertion cutout 50 x 25 mm

# Totalizers electromechanic

## Impulse counters, front panel mount

### Display 6- or 8-digits, with/without reset button

F 504, F 514, F 524

#### Part number

##### Socket box

F 504.

			<u>Display</u>
			B 6-digits 999 999
			C 8-digits 99 999 999
			<u>Voltage / connection</u>
			A3 24 VDC / Standard connection
			A5 24 VAC / Standard connection
			A8 110 VAC / Standard connection
			A9 230 VAC / Standard connection
			<u>Zero setting</u>
640D			With detachable key
650D			With reset button
800F			Without reset button

##### Front panel with screw mount

F 514.    **B**

			<u>Display</u>
			B 6-digits 999 999
			<u>Voltage / connection</u>
			A3 24 VDC / Standard connection
			A5 24 VAC / Standard connection
			A8 110 VAC / Standard connection
			A9 230 VAC / Standard connection
			<u>Zero setting</u>
600B			Without reset button
640A			With detachable key
650A			With reset button

##### Front panel with spring clips mount

F 524.

			<u>Display</u>
			B 6-digits 999 999
			C 8-digits 99 999 999
			<u>Voltage / connection</u>
			A3 24 VDC / Standard connection
			A5 24 VAC / Standard connection
			A8 110 VAC / Standard connection
			A9 230 VAC / Standard connection
			<u>Zero setting</u>
640D			With detachable key, 6-digits
650D			With reset button, 6-digits
600E			Without reset button, 6-digits
800F			Without reset button, 8-digits

# Totalizers electromechanic

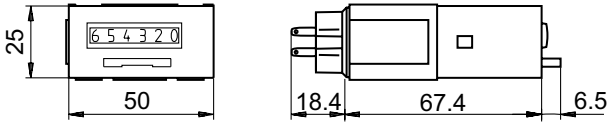
## Impulse counters, front panel mount

### Display 6- or 8-digits, with/without reset button

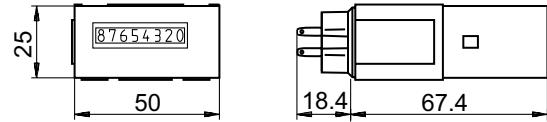
F 504, F 514, F 524

#### Dimensions

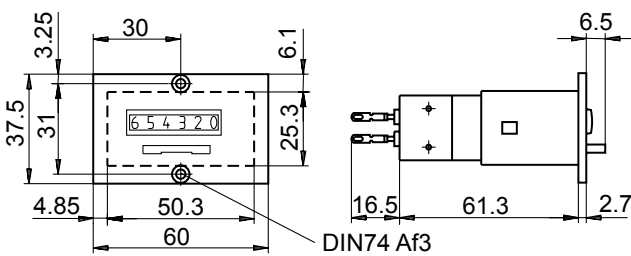
F 504 with reset button, 6-digits



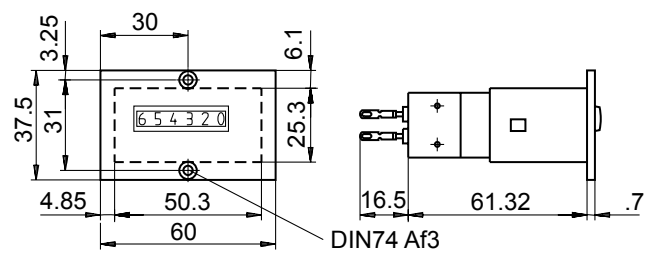
F 504 without reset button, 6- / 8-digits



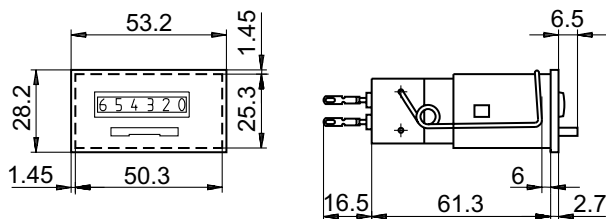
F 514 with reset button, 6-digits



F 514 without reset button, 6-digits



F 524 with reset button, 6-digits



F 524 without reset button, 6- / 8-digits

