

Combination

Tachogenerator with integrated centrifugal switch

Solid shaft with EURO flange B10

TDP 0,2 + FSL, TDPZ 0,2 + FSL



TDP 0,2 + FSL

Features

- Low response time
- Open circuit voltage 10...150 mV per rpm
- Redundant tachogenerator output (TDPZ)
- EURO-flange B10 / solid shaft \varnothing 11 mm
- High signal quality due to patented LongLife technology
- Recognition of sense of rotation possible via control
- Mechanical speed monitoring based on centrifugal force

Optional

- Housing foot (B3)

Technical data - electrical ratings

Interference immunity	EN 61000-6-2
Emitted interference	EN 61000-6-3

Technical data - electrical ratings (tachogenerator)

Reversal tolerance	≤ 0.1 %
Linearity tolerance	≤ 0.15 %
Temperature coefficient	± 0.05 %/K (open-circuit)
Isolation class	B
Calibration tolerance	± 1 %
Climatic test	Humid heat, constant (IEC 60068-2-3, Ca)

TDP 0,2 + FSL

Performance	12 W (speed ≥ 3000 rpm)
Armature-circuit time-constant	< 75 μ s
Open-circuit voltage	10...150 mV per rpm

TDPZ 0,2 + FSL

Performance	2x 3 W (speed ≥ 3000 rpm)
Armature-circuit time-constant	< 40 μ s
Open-circuit voltage	20...100 mV per rpm

Technical data - electrical ratings (centrifugal switch)

Switching accuracy	± 4 % ($\Delta n = 2$ rpm/s); = +20 % ($\Delta n = 1500$ rpm/s)
Switching deviation cw-ccw rotation	≤ 3 %
Switching hysteresis	~ 40 % of switching speed
Switching outputs	1 output, speed control
Output switching capacity	≤ 6 A / 230 VAC; ≤ 1 A / 125 VDC
Minimum switching current	50 mA

Technical data - mechanical design

Size (flange)	$\varnothing 115$ mm
Shaft type	$\varnothing 11$ mm solid shaft
Admitted shaft load	≤ 60 N axial ≤ 80 N radial
Flange	EURO flange B10
Protection DIN EN 60529	IP 55
Speed (n)	$\leq 1.25 \cdot ns$
Range of switching speed (ns)	850...4500 rpm ($\Delta n = 2$ rpm/s)
Torque	1.5 Ncm
Materials	Housing: aluminium die-cast Shaft: stainless steel
Operating temperature	-30...+130 °C
Resistance	IEC 60068-2-6 Vibration 5 g, 10-2000 Hz IEC 60068-2-27 Shock 150 g, 1 ms
Connection	2x terminal box
Approval	CE

TDP 0,2 + FSL

Rotor moment of inertia	1.4 kgcm ²
Weight approx.	3.1 kg

TDPZ 0,2 + FSL

Rotor moment of inertia	1.5 kgcm ²
Weight approx.	3.5 kg

Combination

Tachogenerator with integrated centrifugal switch

Solid shaft with EURO flange B10

TDP 0,2 + FSL, TDPZ 0,2 + FSL

Part number

Tachogenerator with centrifugal switch

TDP0,2 LT- **55 + FSL**

Switching speed (ns)

- 6 850...949 rpm ($\Delta n = 2$ rpm/s)*
- 5 950...1099 rpm ($\Delta n = 2$ rpm/s)*
- 4 1100...1299 rpm ($\Delta n = 2$ rpm/s)*
- 3 1300...1799 rpm ($\Delta n = 2$ rpm/s)*
- 2 1800...2499 rpm ($\Delta n = 2$ rpm/s)*
- 1 2500...4500 rpm ($\Delta n = 2$ rpm/s)*

Mounting type

- B10 EURO flange B10
- B3 Housing foot

Open-circuit voltage

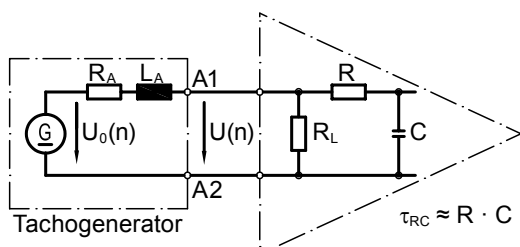
- 6 10 mV per rpm
- 7 20 mV per rpm
- 10 30 mV per rpm
- 5 40 mV per rpm
- 4 60 mV per rpm
- 3 100 mV per rpm
- 1 150 mV per rpm

* Please specify the exact switching speed in addition to the part number (factory setted threshold).

Data according to type

Type	Open-circuit voltage U_0 [mV/rpm]	Minimum load required depending on speed range [rpm]			Maximum operating speed n_{max} [rpm]	Armature resistance R_A (20°C) [Ω]	Armature inductance L_A [mH]
		0-3000 R_L [kΩ]	0-6000 R_L [kΩ]	0- n_{max} R_L [kΩ]			
TDP0,2 LT-6	10	≥ 0.1	≥ 0.3	≥ 0.9	10000	3	6
TDP0,2 LT-7	20	≥ 0.3	≥ 1.2	≥ 3.3	10000	11	23
TDP0,2 LT-10	30	≥ 0.7	≥ 2.7	≥ 7.5	10000	26	50
TDP0,2 LT-5	40	≥ 1.2	≥ 5	≥ 13.5	10000	47	90
TDP0,2 LT-4	60	≥ 2.7	≥ 11	≥ 30	10000	99	200
TDP0,2 LT-3	100	≥ 7.5	≥ 30	≥ 30	6000	271	550
TDP0,2 LT-1	150	≥ 16	---	≥ 30	4000	630	1260
Twin tachogenerator with redundant output (The data refer to each of the two tachogenerator outputs)							
TDPZ0,2 LT-7	20	≥ 1.2	≥ 4.8	≥ 14	10000	19	45
TDPZ0,2 LT-5	40	≥ 4.8	≥ 20	≥ 54	10000	70	170
TDPZ0,2 LT-4	60	≥ 11	≥ 44	≥ 120	10000	160	390
TDPZ0,2 LT-3	100	≥ 30	≥ 120	---	6000	445	1080
Superimposed ripple (for $\tau_{RC} = 0.7$ ms):		$\leq 0.5\%$ (peak-peak)			$\leq 0.2\%$ (rms)		

Replacement switching diagram



Polarity for positive rotating direction:
 A1 (TDPZ: 1A1, 2A1): + (VDE)
 A2 (TDPZ: 1A2, 2A2): - (VDE)

$U(n) = U_0(n) \frac{R_L}{R_A + R_L} \approx U_0(n)$ for $R > R_L \gg R_A$

Combination

Tachogenerator with integrated centrifugal switch

Solid shaft with EURO flange B10

TDP 0,2 + FSL, TDPZ 0,2 + FSL

Part number

Twin tachogenerator with centrifugal switch

TDPZ0,2 LT- **55 + FSL**

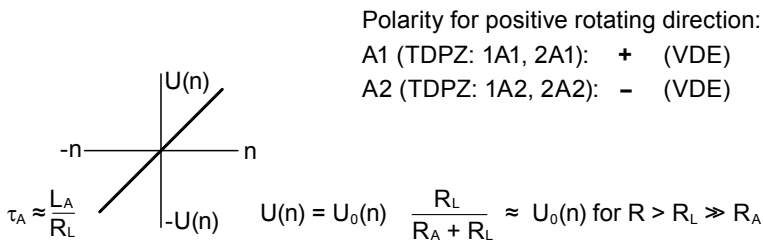
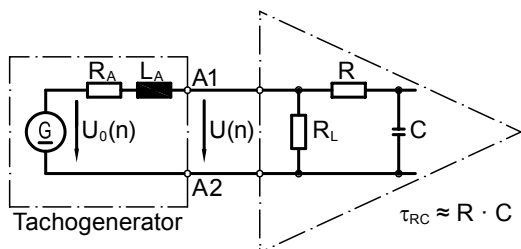
<p>Switching speed (ns)</p> <p>6 850...949 rpm ($\Delta n = 2$ rpm/s)*</p> <p>5 950...1099 rpm ($\Delta n = 2$ rpm/s)*</p> <p>4 1100...1299 rpm ($\Delta n = 2$ rpm/s)*</p> <p>3 1300...1799 rpm ($\Delta n = 2$ rpm/s)*</p> <p>2 1800...2499 rpm ($\Delta n = 2$ rpm/s)*</p> <p>1 2500...4500 rpm ($\Delta n = 2$ rpm/s)*</p> <p>Mounting type</p> <p>B10 EURO flange B10</p> <p>B3 Housing foot</p> <p>Open-circuit voltage</p> <p>7 20 mV per rpm</p> <p>5 40 mV per rpm</p> <p>4 60 mV per rpm</p> <p>3 100 mV per rpm</p>	<p>Switching speed (ns)</p> <p>6 850...949 rpm ($\Delta n = 2$ rpm/s)*</p> <p>5 950...1099 rpm ($\Delta n = 2$ rpm/s)*</p> <p>4 1100...1299 rpm ($\Delta n = 2$ rpm/s)*</p> <p>3 1300...1799 rpm ($\Delta n = 2$ rpm/s)*</p> <p>2 1800...2499 rpm ($\Delta n = 2$ rpm/s)*</p> <p>1 2500...4500 rpm ($\Delta n = 2$ rpm/s)*</p> <p>Mounting type</p> <p>B10 EURO flange B10</p> <p>B3 Housing foot</p> <p>Open-circuit voltage</p> <p>7 20 mV per rpm</p> <p>5 40 mV per rpm</p> <p>4 60 mV per rpm</p> <p>3 100 mV per rpm</p>
--	--

* Please specify the exact switching speed in addition to the part number (factory setted threshold).

Data according to type

Type	Open-circuit voltage U_0 [mV/rpm]	Minimum load required depending on speed range [rpm]			Maximum operating speed n_{max} [rpm]	Armature resistance R_A (20°C) [Ω]	Armature inductance L_A [mH]
		0-3000 R_L [k Ω]	0-6000 R_L [k Ω]	0- n_{max} R_L [k Ω]			
TDP0,2 LT-6	10	≥ 0.1	≥ 0.3	≥ 0.9	10000	3	6
TDP0,2 LT-7	20	≥ 0.3	≥ 1.2	≥ 3.3	10000	11	23
TDP0,2 LT-10	30	≥ 0.7	≥ 2.7	≥ 7.5	10000	26	50
TDP0,2 LT-5	40	≥ 1.2	≥ 5	≥ 13.5	10000	47	90
TDP0,2 LT-4	60	≥ 2.7	≥ 11	≥ 30	10000	99	200
TDP0,2 LT-3	100	≥ 7.5	≥ 30	≥ 30	6000	271	550
TDP0,2 LT-1	150	≥ 16	---	≥ 30	4000	630	1260
Twin tachogenerator with redundant output (The data refer to each of the two tachogenerator outputs)							
TDPZ0,2 LT-7	20	≥ 1.2	≥ 4.8	≥ 14	10000	19	45
TDPZ0,2 LT-5	40	≥ 4.8	≥ 20	≥ 54	10000	70	170
TDPZ0,2 LT-4	60	≥ 11	≥ 44	≥ 120	10000	160	390
TDPZ0,2 LT-3	100	≥ 30	≥ 120	---	6000	445	1080
Superimposed ripple (for $\tau_{RC} = 0.7$ ms):		$\leq 0.5\%$ (peak-peak)			$\leq 0.2\%$ (rms)		

Replacement switching diagram



Combination

Tachogenerator with integrated centrifugal switch

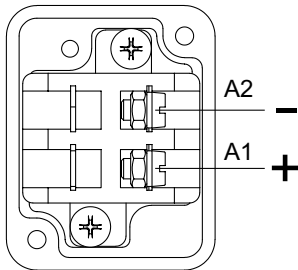
Solid shaft with EURO flange B10

TDP 0,2 + FSL, TDPZ 0,2 + FSL

Terminal assignment

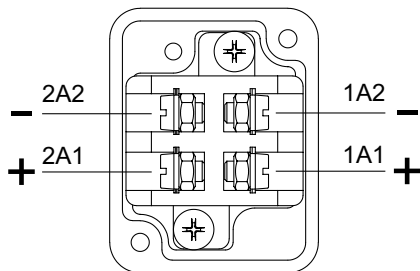
View A - Connecting terminal TDP 0,2

Polarity for positive direction of rotation



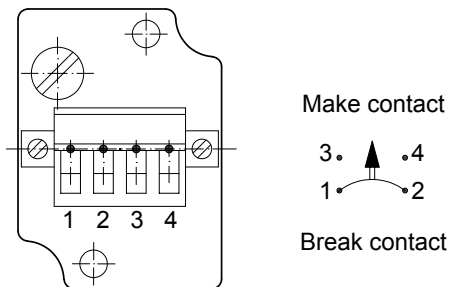
View A - Connecting terminal TDPZ 0,2

Polarity for positive direction of rotation



View B

Connecting terminal mechanical centrifugal switch FSL



Accessories

Carbon brushes

Mounting accessories

K 35	Spring washer coupling for solid shaft $\varnothing 6...12$ mm
K 50	Spring washer coupling for solid shaft $\varnothing 11...16$ mm
K 60	Spring washer coupling for solid shaft $\varnothing 11...22$ mm

Combination

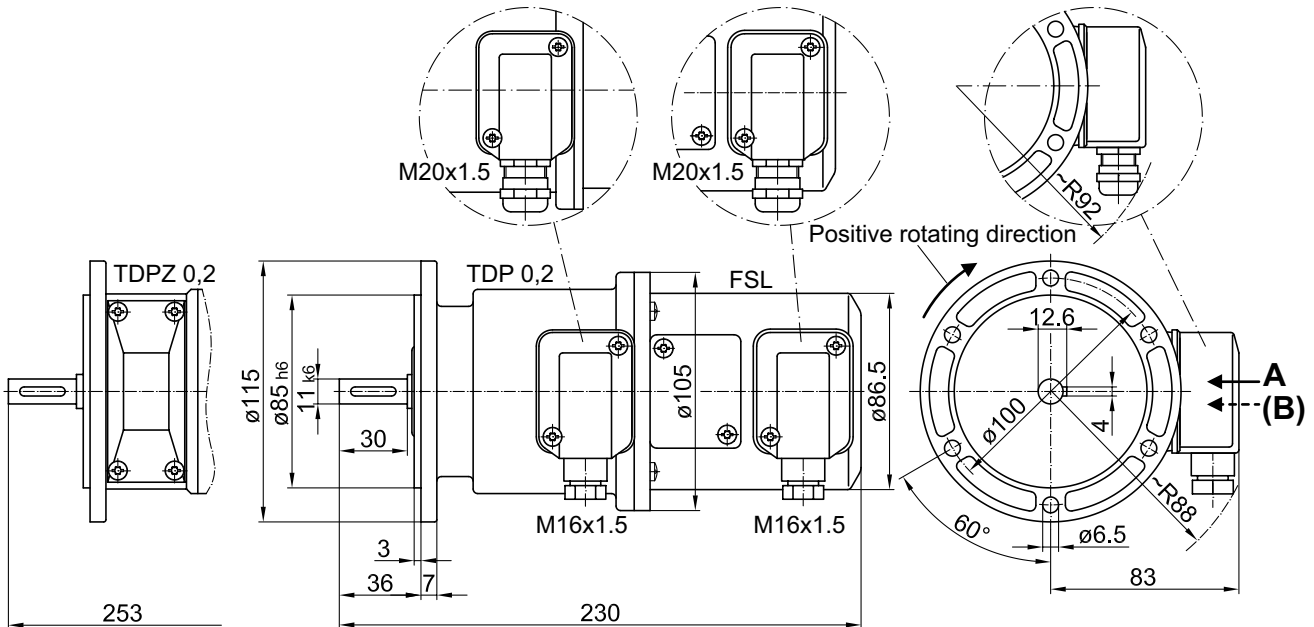
Tachogenerator with integrated centrifugal switch

Solid shaft with EURO flange B10

TDP 0,2 + FSL, TDPZ 0,2 + FSL

Dimensions

TDP 0,2 + FSL (TDPZ 0,2 + FSL) - Version with Euro flange (B10)



TDP 0,2 + FSL (TDPZ 0,2 + FSL) - Version with housing foot (B3)

