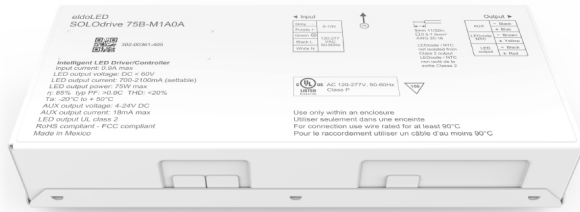


**SOLOdrive**

SOLOdrive offers industry-best Natural Dimming to dark - LED dimming made beautiful! With any dimmer, in any application. Symbiosis on SOLOdrive stands for unity, for the SOLOdrive working seamlessly together with LED modules, controls and intelligent luminaire elements.

**Product offering**



**SOLOdrive 75B-M1A0A**

Part number (P/N)	SL75B-M1A0A1
Product description	SOLOdrive AC, 75W, 0-10V + AUX, 1 control channel, constant current, 1x 55V output, bottom feed, square metal

**Features & benefits**

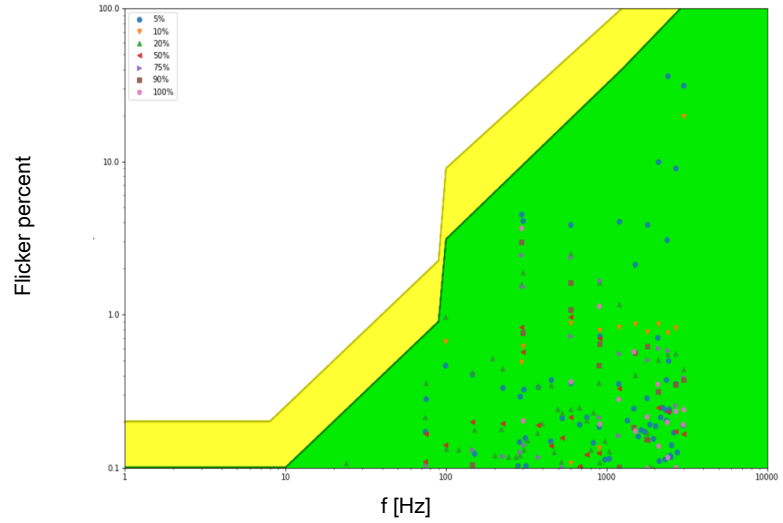
Natural dimming	Dim to dark, smooth brightness changes, excellent flicker performance, adaptable dimming curves, configurable minimum dimming level
Symbiosis	Seamless interoperability with LED modules, controls and in-luminaire intelligent devices
LEDcode	Configurable design to work with most constant current LED modules and arrays, while providing a connection point to integrated peripheral controls
Programmable	Fine-tune your driver for any application
Camera compatibility	Hybrid HydraDrive technology is proven to work in TV studios and security camera environments

Project name:	Contact details:
Project number:	
LED driver order number:	

## Typical flicker performance

Typical flicker performance

Typical flicker percent as a function of frequency, measured across the dimming range. The results are overlaid with the low-risk (yellow) and no observable effect (green) levels as defined in IEEE P1789.



## Electrical specifications

Driver type	constant current
Number of LED outputs	1
Maximum LED output power	75W
Programmable LED output current range	700- 2,100mA
LED output type	Programmable in 1mA increments within specified current range
LED output voltage range	2-55V
Auxiliary output	15.5 - 25V DC, 18mA max
Nominal input voltage range AC	120-277V (UL)
Control protocol	0-10V LEDcode
Control channels	1

## Certifications



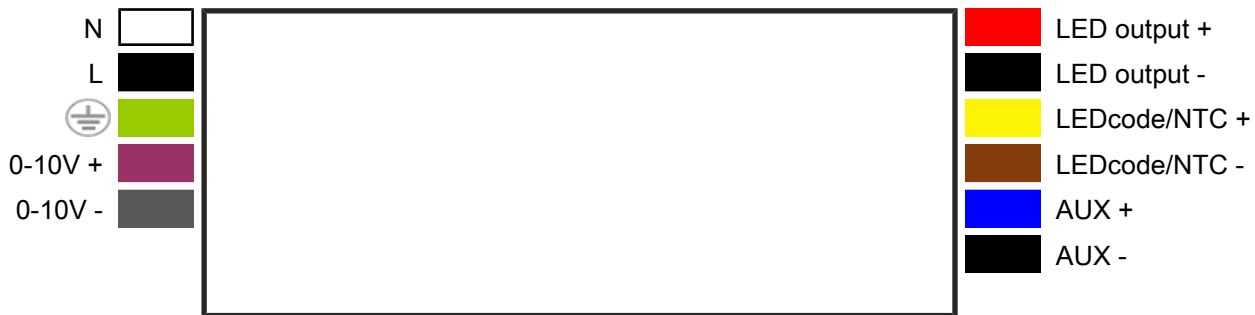
## Warranty

Warranty period	<a href="#">General Terms and Conditions</a>
-----------------	--

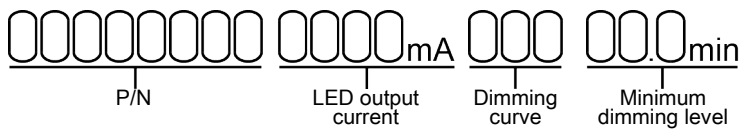
### Dimensions, weight, packaging

Length (L)	typical: 174.4 mm / 6.87 in
Width (W)	typical: 71.9 mm / 2.83 in
Height (H)	typical: 29.4 mm / 1.16 in
Weight	430 g
Products per box	40 pcs

### Connector layout



### Order number configurator



P/N	LED driver part number.
LED output current	Enter value in 1mA increments, e.g. "811" for 811mA
Dimming curve	"LOG" for logarithmic (default) "LIN" for linear "SLN" for soft-linear "SQU" for square
Minimum dimming level	Leave blank for default minimum dimming level of 0.1%. Specify in 0.1% increments, e.g. "10.5" for 10.5%.

---

### Europe, Rest of World

eldoLED B.V.  
Science Park Eindhoven 5125  
5692 ED Son  
The Netherlands

E: [info@eldoled.com](mailto:info@eldoled.com)  
W: [www.eldoled.com](http://www.eldoled.com)

### North America

eldoLED America  
One Lithonia Way  
Conyers, GA 30012  
USA

E: [info@eldoled.com](mailto:info@eldoled.com)  
W: [www.eldoled.com](http://www.eldoled.com)

---