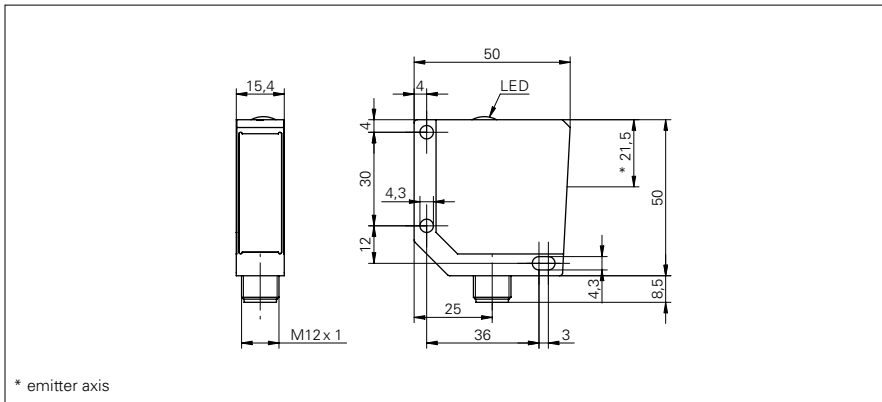


Retro-reflective sensors

OPDM 16 (Laser)

sample drawing



* emitter axis

general data

type	retro-reflective laser sensor
light source	pulsed red laser diode
polarization filter	yes
alignment / soiled lens indicator	flashing light indicator
light indicator	LED yellow
laser class	1
wave length	650 nm
actual range Sb = 7,5 m	
nominal range Sn	8,3 m
repeat accuracy	< 0,1 mm at laser focus
sensitivity adjustment	potentiometer, 270°
distance to focus	80 mm
actual range Sb = 11 m	
nominal range Sn	12 m
repeat accuracy	< 1,5 mm at 0 ... 0,5 m
sensitivity adjustment	no
distance to focus	400 mm

electrical data

response time / release time	< 0,1 ms
voltage supply range +Vs	10 ... 30 VDC
current consumption max. (no load)	70 mA
current consumption typ.	60 mA
voltage drop Vd	< 2 VDC
output function	light / dark operate
output circuit	PNP
output current	< 200 mA
short circuit protection	yes
reverse polarity protection	yes

mechanical data

width / diameter	15,4 mm
height / length	50 mm
depth	50 mm
type	rectangular
housing material	die-cast zinc
front (optics)	glass

sample picture



laser warning

CLASS 1 LASER PRODUCT

IEC 60825-1/2014
Complies with 21 CFR 1040.10 and 1040.11
except for deviations pursuant to laser
notice No. 50, dated June 24, 2007

Retro-reflective sensors**OPDM 16 (Laser)****ambient conditions**

operating temperature	-10 ... +50 °C
protection class	IP 67

order reference	actual range Sb	connection types
OPDM 16P5102	11 m	cable 4 pin, 2 m
OPDM 16P5102/S14	11 m	connector M12 4 pin
OPDM 16P5103/S14	7,5 m	connector M12 4 pin