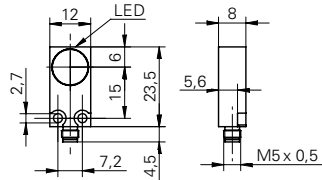


# Inductive proximity switch

# IFFM 12P17A3/S05L

### dimension drawing



### general data

mounting type	flush
nominal sensing distance $S_n$	4 mm
hysteresis	3 ... 20 % of $S_r$
output indicator	LED red

### electrical data

switching frequency	< 2 kHz
voltage supply range +Vs	10 ... 30 VDC
current consumption max. (no load)	10 mA
output circuit	PNP make function (NO)
voltage drop $V_d$	< 2 VDC
output current	< 200 mA
short circuit protection	yes
reverse polarity protection	yes

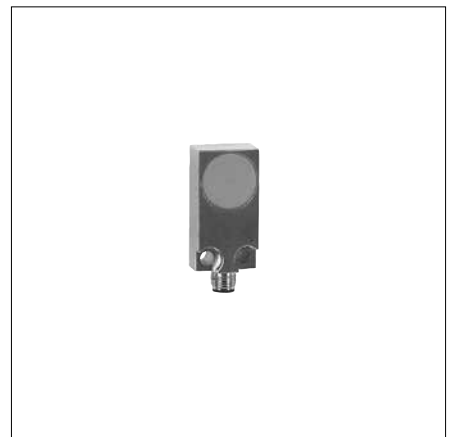
### mechanical data

type	rectangular
material (sensing face)	PBT
housing material	brass nickel plated
dimension	12 mm
housing length	23,5 mm
connection types	connector M5

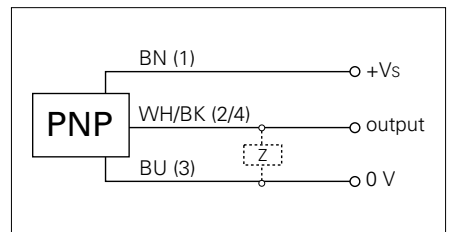
### ambient conditions

operating temperature	-25 ... +75 °C
protection class	IP 67

### photo



### connection diagram



- extra flat housing
- miniature connector M5 x 0,5