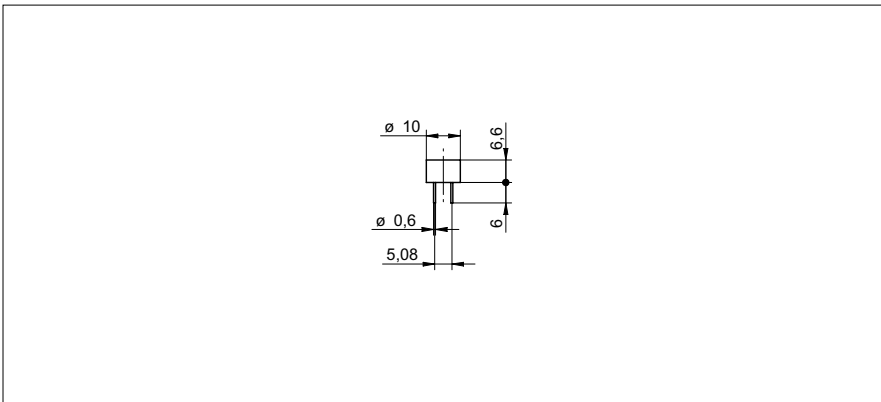


Inductive sensors NAMUR

IFR 10.82.05

dimension drawing



general data

mounting type	flush
nominal sensing distance Sn	2 mm

electrical data

switching frequency	< 2 kHz
normal operating voltage	8,2 VDC
voltage supply range +Vs	5 ... 30 VDC
current consumption undamped	> 4 mA
current consumption damped	< 1 mA
current consumption max. (no load)	10 mA
output circuit	NAMUR
residual ripple	< 10 % Vs

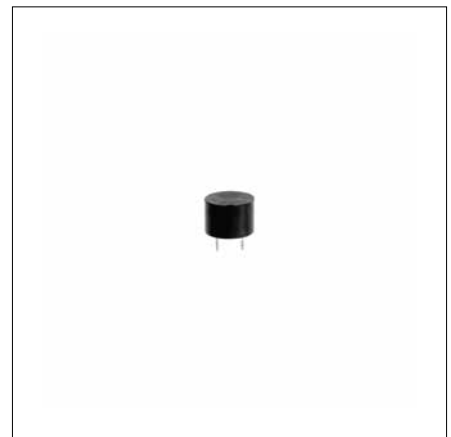
mechanical data

type	cylindrical smooth
housing material	PBT
dimension	10 mm
housing length	6,6 mm
connection types	pins

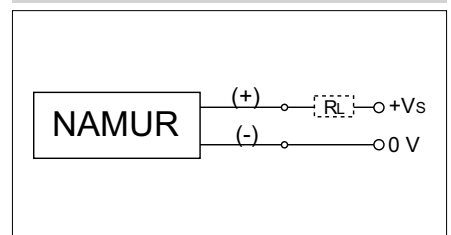
ambient conditions

operating temperature	-25 ... +75 °C
protection class	IP 67

photo



connection diagram



• circuit board mountable