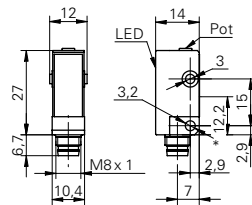


Diffuse sensors with background suppression

FHDK 10 (for glass detection)

sample drawing



* emitter axis

general data

type	background suppression
version	for glass detection
light source	pulsed red LED
sensing distance T_w	10 ... 30 mm
sensing range T_b (at T_w max.)	3 ... 30 mm
alignment / soiled lens indicator	flashing light indicator
light indicator	LED yellow
sensing distance adjustment	mechanical, 5 turn
wave length	660 nm
suppression of reciprocal influence	yes

electrical data

response time / release time	< 1 ms
voltage supply range +Vs	10 ... 30 VDC
current consumption max. (no load)	30 mA
current consumption typ.	20 mA
voltage drop V_d	< 1,8 VDC
output function	light / dark operate
output current	< 100 mA
short circuit protection	yes
reverse polarity protection	yes

mechanical data

width / diameter	10,4 mm
height / length	27 mm
depth	14 mm
type	rectangular
housing material	plastic (ASA)
front (optics)	PMMA
connection types	connector M8 4 pin

ambient conditions

operating temperature	-25 ... +65 °C
protection class	IP 67

sample picture



Diffuse sensors with background suppression

FHDK 10 (for glass detection)

order reference	output circuit
FHDK 10N5160/S35A	NPN
FHDK 10P5160/S35A	PNP