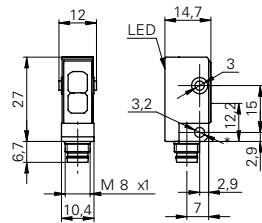


Diffuse sensors with background suppression

FHDK 10 (Tw fixed)

sample drawing



* emitter axis

general data

type	background suppression
light source	pulsed red LED
alignment / soiled lens indicator	flashing light indicator
light indicator	LED yellow
wave length	660 nm
suppression of reciprocal influence	yes

electrical data

response time / release time	< 1 ms
voltage supply range +Vs	10 ... 30 VDC
current consumption max. (no load)	25 mA
current consumption typ.	18 mA
voltage drop Vd	< 1,8 VDC
output function	light / dark operate
output circuit	push-pull
output current	< 50 mA
short circuit protection	yes
reverse polarity protection	yes

mechanical data

width / diameter	10,4 mm
height / length	27 mm
depth	14,7 mm
type	rectangular
housing material	plastic (ASA)
front (optics)	PMMA

ambient conditions

operating temperature	-25 ... +65 °C
-----------------------	----------------

sample picture



order reference	sensing distance Tw	connection types	protection class
FHDK 10G5120	30 mm ±2 mm	cable 4 pin, 2 m	IP 65
FHDK 10G5120/S35A	30 mm ±2 mm	connector M8 4 pin	IP 67
FHDK 10G5121	50 mm ±3 mm	cable 4 pin, 2 m	IP 65
FHDK 10G5121/S35A	50 mm ±3 mm	connector M8 4 pin	IP 67
FHDK 10G5122	80 mm ±8 mm	cable 4 pin, 2 m	IP 65
FHDK 10G5122/S35A	80 mm ±8 mm	connector M8 4 pin	IP 67