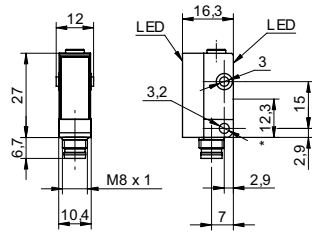


**Retro-reflective sensors**

**FDPK 10**

**sample drawing**



\* emitter axis

**general data**

type	retro-reflective sensor
light source	pulsed red LED
actual range $S_b$	3,5 m
nominal range $S_n$	4 m
polarization filter	yes
alignment / soiled lens indicator	flashing light indicator
light indicator	LED yellow
wave length	660 nm
suppression of reciprocal influence	yes

**electrical data**

response time / release time	< 0,5 ms
voltage supply range +Vs	10 ... 30 VDC
current consumption max. (no load)	25 mA
current consumption typ.	20 mA
voltage drop $V_d$	< 1,8 VDC
output function	light / dark operate
output current	< 100 mA
short circuit protection	yes
reverse polarity protection	yes

**mechanical data**

width / diameter	10,4 mm
height / length	27 mm
depth	16,3 mm
type	rectangular
housing material	plastic (ASA)
front (optics)	PMMA

**ambient conditions**

operating temperature	-25 ... +65 °C
-----------------------	----------------

**sample picture**



**Retro-reflective sensors****FPDK 10**

<b>order reference</b>	<b>connection types</b>	<b>output circuit</b>	<b>sensitivity adjustment</b>	<b>protection class</b>
<b>FPDK 10N5130</b>	cable 4 pin, 2 m	NPN	no	IP 65
<b>FPDK 10N5130/S35A</b>	connector M8 4 pin	NPN	no	IP 67
<b>FPDK 10N5135</b>	cable 4 pin, 2 m	NPN	potentiometer, 240°	IP 65
<b>FPDK 10N5135/S35A</b>	connector M8 4 pin	NPN	potentiometer, 240°	IP 67
<b>FPDK 10P5130</b>	cable 4 pin, 2 m	PNP	no	IP 65
<b>FPDK 10P5130/S35A</b>	connector M8 4 pin	PNP	no	IP 67
<b>FPDK 10P5135</b>	cable 4 pin, 2 m	PNP	potentiometer, 240°	IP 65
<b>FPDK 10P5135/S35A</b>	connector M8 4 pin	PNP	potentiometer, 240°	IP 67