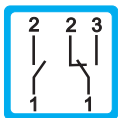
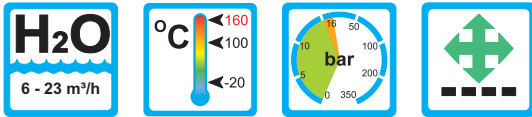


Flow Monitor

WBM-65



Range of Application

Operation

- Float measuring principle

Application

- Mechanical engineering
- Plant construction
- Pharma industry
- Chemical industry
- Cooling systems and cooling circuits

Charakteristika

- Universal orientation
- High reliability
- Flange-connection

Installation hints

- The operating instructions for WBM-65 must be observed!
- Download: www.meister-flow.com

Operating Data

Operating pressure max.	16 bar (brass) 16 bar (1.4571) optional: PN 25
Pressure drop at 23 m ³ /h	0,3 bar
Maximum temperature	100 °C (optional 160 °C)
Accuracy	±10 % of full scale

Measuring Ranges

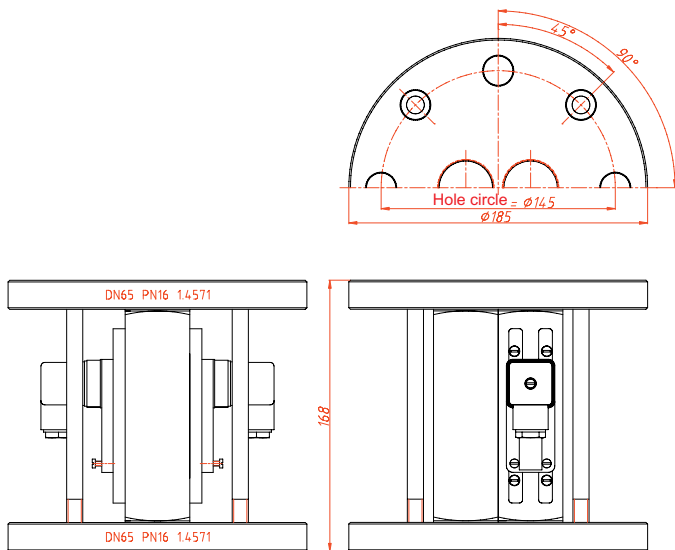
Type	Switch point for H ₂ O at 20 °C ⁽¹⁾ [m ³ /h]
WBM-65	
Lowest Switch point:	6
Highest Switch point:	23

⁽¹⁾ The specified data are switch-off points.



Technical Data

Mechanical drawing



Electrical Data

Change over 250V • 1,5A • 50VA ⁽¹⁾

Normally open 250V • 3A • 100VA

Ingress Protection:

IP65: plug connection DIN 43650 Form A

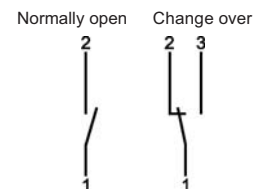
IP67: 1 m sealed in cable

Plug types

Other plug types or cable lengths on request

⁽¹⁾ Minimum load 3 VA

Connection diagram



Material

Brass version

Wetted parts:

Spring: 1.4571
 Gaskets: NBR
 (optional FKM, EPDM) ⁽²⁾
 Magnets: Hard ferrite
 Housing: Brass nickel-plated
 Flange: 1.4571

All other wetted parts: Brass

Stainless steel version

Wetted parts:

Spring: 1.4571
 Gaskets: FKM
 (optional NBR, EPDM) ⁽³⁾
 Magnets: Hard ferrite
 Housing: 1.4571
 Flange: 1.4571

All other wetted parts: 1.4571

⁽²⁾ Other gasket materials on request

Summary of types

Type:	Overall dimensions [mm]					Weight (approx.) [g]
	DN	PN	Flange Ø	Hole circle Ø	L	
WBM-65	65	16	185	145	168	9300

Note

For further information, please refer to the operating instructions "WBM-65".

WBM-65 2 0001 03-10 E M

