

# Totalizers electromechanic

## Impulse counters adding, spring clip

### Display 6- or 8-digits, with/without reset button

F 324



F 324 - Front panel with spring clip

#### Features

- Impulse counter
- Adding
- Display 6- or 8-digits
- With or without reset button
- Front panel with spring clip

#### Technical data - electrical ratings

Voltage supply	24/110 VAC $\pm 10\%$ (50/60 Hz) 230 VAC $+6/-10\%$ (50/60 Hz) 24 VDC $\pm 10\%$
Residual ripple	<48 %
Nominal frequency	50 / 60 Hz
Power consumption	2.2 W, 2.4 VA
Pulse ratio	1:1
Service life	100 million impulses
Standard DIN EN 61010-1	Protection class II Overvoltage category II Pollution degree 2
Emitted interference	DIN EN 61000-6-4
Interference immunity	DIN EN 61000-6-2

#### Technical data - mechanical design

Display	White numbers on black
Number of digits	6-digits with reset button 8-digits without reset button
Digit height	4.5 mm
Count mode	1 impulse = 1 count
Step-by-step switching	Adding in 2 half steps
Measuring range	999 999 and 99 999 999
Zero setting	Manual by reset button
Ambient temperature	0...+45 °C
Storage temperature	-20...+70 °C
Relative humidity	80 % non-condensing
Protection DIN EN 60529	IP 41
Housing type	Built-in housing
Connection	Soldering pins (flat)
Mounting type	Front panel with spring clips
Dimensions W x H x L	53.2 x 28.2 x 61 mm
Cutout dimensions	51 x 26 mm
Mounting depth	77.5 mm
Weight approx.	100 g
Material	Housing: Noryl PPO, black

# Totalizers electromechanic

Impulse counters adding, spring clip  
Display 6- or 8-digits, with/without reset button

F 324

## Trigger level

### Max. counting speed 10 pulses/s

Voltage	24/110 VAC $\pm 10\%$ 230 VAC +6/-10 %
---------	---

Power	2.4 VA
-------	--------

Min. pulse duration	50 ms
---------------------	-------

Min. pulse interval	50 ms
---------------------	-------

Switch on time (at 25 °C)	100 %
---------------------------	-------

### Max. counting speed 20 pulses/s

Voltage	24 VDC $\pm 10\%$
---------	-------------------

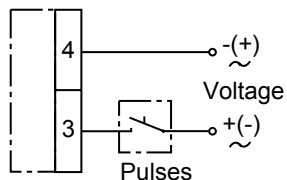
Power	2.2 W
-------	-------

Min. pulse duration	25 ms
---------------------	-------

Min. pulse interval	25 ms
---------------------	-------

Switch on time (at 25 °C)	100 %
---------------------------	-------

## Connection diagram



# Totalizers electromechanic

Impulse counters adding, spring clip

Display 6- or 8-digits, with/without reset button

## F 324

---

### Part number

F 324.

Display

C 8-digits 99 999 999

B 6-digits 999 999

Voltage

A3 24 VDC

A5 24 VAC

A8 110 VAC

A9 230 VAC

Zero setting

800B Without reset button

650A With reset button

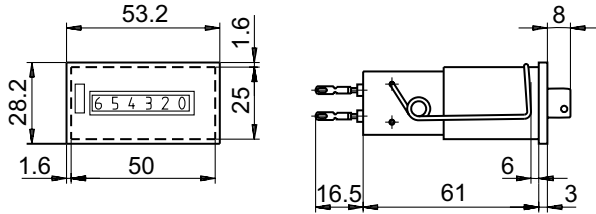
# Totalizers electromechanic

Impulse counters adding, spring clip  
Display 6- or 8-digits, with/without reset button

F 324

## Dimensions

F 324 with reset button, 6-digits



F 324 without reset button, 8-digits

