

# Incremental encoders

Through hollow shaft  $\varnothing 30$  to  $\varnothing 50$  mm

1024...10000 pulses per revolution

## ITD61H00



ITD61H00 with through hollow shaft

### Features

- Robust encoder in size  $\varnothing 120$  mm
- Precise optical sensing
- Universal voltage supply 4.75...30 VDC
- Output signal level TTL or HTL
- Through hollow shaft  $\varnothing 30$ ...50 mm
- Pulses per revolution up to 10 000
- B-side clamping
- Stainless steel design (1.4305)

### Technical data - electrical ratings

Voltage supply	8...30 VDC 4.75...30 VDC
Reverse polarity protection	Yes
Consumption w/o load	$\leq 100$ mA
Pulses per revolution	1024...10000
Reference signal	Zero pulse, width $90^\circ$
Sensing method	Optical
Output frequency	$\leq 300$ kHz (UB = 5 VDC, at 4.75...30 VDC) $\leq 160$ kHz (UB > 5 VDC, at 4.75...30 VDC) $\leq 300$ kHz (at 8...30 VDC)
Output signals	A, B, N + inverted
Output stages	Push-pull short-circuit proof
Interference immunity	DIN EN 61000-6-2
Emitted interference	DIN EN 61000-6-3
Approval	UL 508 / CSA 22.2

### Technical data - mechanical design

Size (flange)	$\varnothing 120$ mm
Shaft type	$\varnothing 30$ ...50 mm (through hollow shaft)
Mounting kit	051 058
Protection DIN EN 60529	IP 54
Operating speed	$\leq 4000$ rpm
Starting torque	$\leq 0.12$ Nm (+20 °C)
Materials	Housing: stainless steel Shaft: stainless steel
Operating temperature	-20...+70 °C
Relative humidity	90 % non-condensing
Resistance	DIN EN 60068-2-6 Vibration 10 g, 55-2000 Hz DIN EN 60068-2-27 Shock 30 g, 11 ms
Connection	Cable 1 m Connector M23 type 2, 12-pin
Weight approx.	2000 g

# Incremental encoders

Through hollow shaft  $\varnothing 30$  to  $\varnothing 50$  mm  
1024...10000 pulses per revolution

ITD61H00

## Part number

ITD61H00 

				S		IP54	
--	--	--	--	---	--	------	--

Mounting kit

051 Mounting kit 051

058 Mounting kit 058

Protection

IP54 IP 54

Through hollow shaft

30  $\varnothing 30$  mm

35  $\varnothing 35$  mm

40  $\varnothing 40$  mm

45  $\varnothing 45$  mm

50  $\varnothing 50$  mm

Operating temperature

S -20...+70 °C

Connection

D2SR12 Flange connector type 2, pin contacts, radial, 12-pin

KR1 Cable 1 m, radial

Output signals

NI A, A inv, B, B inv, 0, 0 inv (signal sequence A leading B (CW))

SI A, A inv, B, B inv, 0, 0 inv (signal sequence B leading A (CW))

Voltage supply / signals

R 8...30 VDC / Uout = 5 V

V 4.75...30 VDC / Uout = Uin

Pulse number - see table

## Pulse number

1024	2048	2500	4096	10000
------	------	------	------	-------

Other diameters on request.

Subject to modification in technic and design. Errors and omissions excepted.

# Incremental encoders

Through hollow shaft  $\varnothing 30$  to  $\varnothing 50$  mm

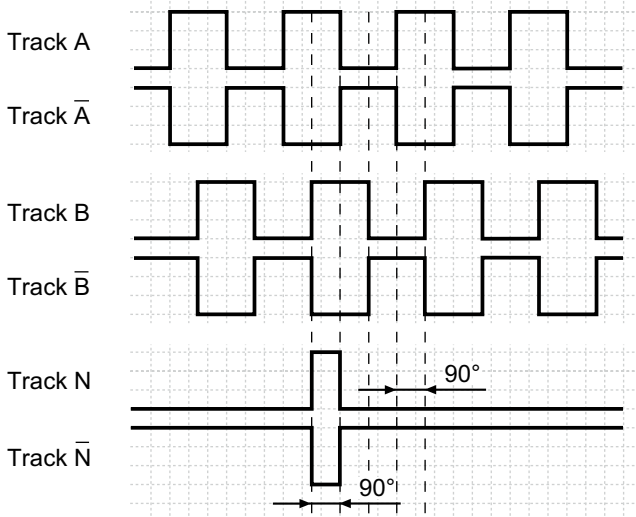
1024...10000 pulses per revolution

## ITD61H00

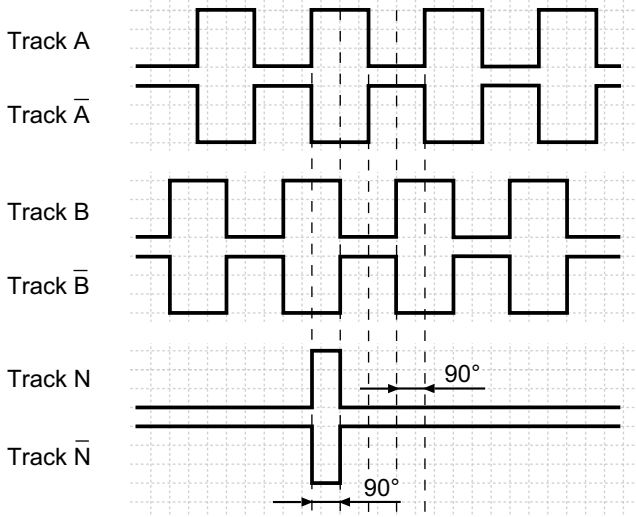
### Output signals

Clockwise rotation when looking at the mounting side.

#### NI-Output signals



#### SI-Output signals



### Terminal assignment

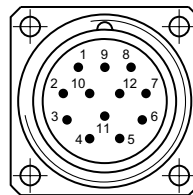
#### Cable

Core color	Assignment
green	Track A
brown	Track A inv.
grey	Track B
black	Track B inv.
pink	Track N
white	Track N inv.
red	UB
blue	GND
yellow	UB-Sense
violet	GND-Sense
transparent	Shield/Housing

Cable: PUR, [5x2x0,14 mm<sup>2</sup>], bending radius >70 mm, outer diameter 7 mm

#### Flange connector M23, 12-pin

Connector	Assignment
Pin 5	Track A
Pin 6	Track A inv.
Pin 8	Track B
Pin 1	Track B inv.
Pin 3	Track N
Pin 4	Track N inv.
Pin 12	UB
Pin 10	GND
Pin 2	UB-Sense
Pin 11	GND-Sense
Pin 9	-
Pin 7	-



### Trigger level

Outputs	4.75...30 VDC / $U_{OUT} = U_{IN}$
Output level High	$\geq U_B - 3$ V
Output level Low	$\leq 1$ V
Load	$\leq 30$ mA

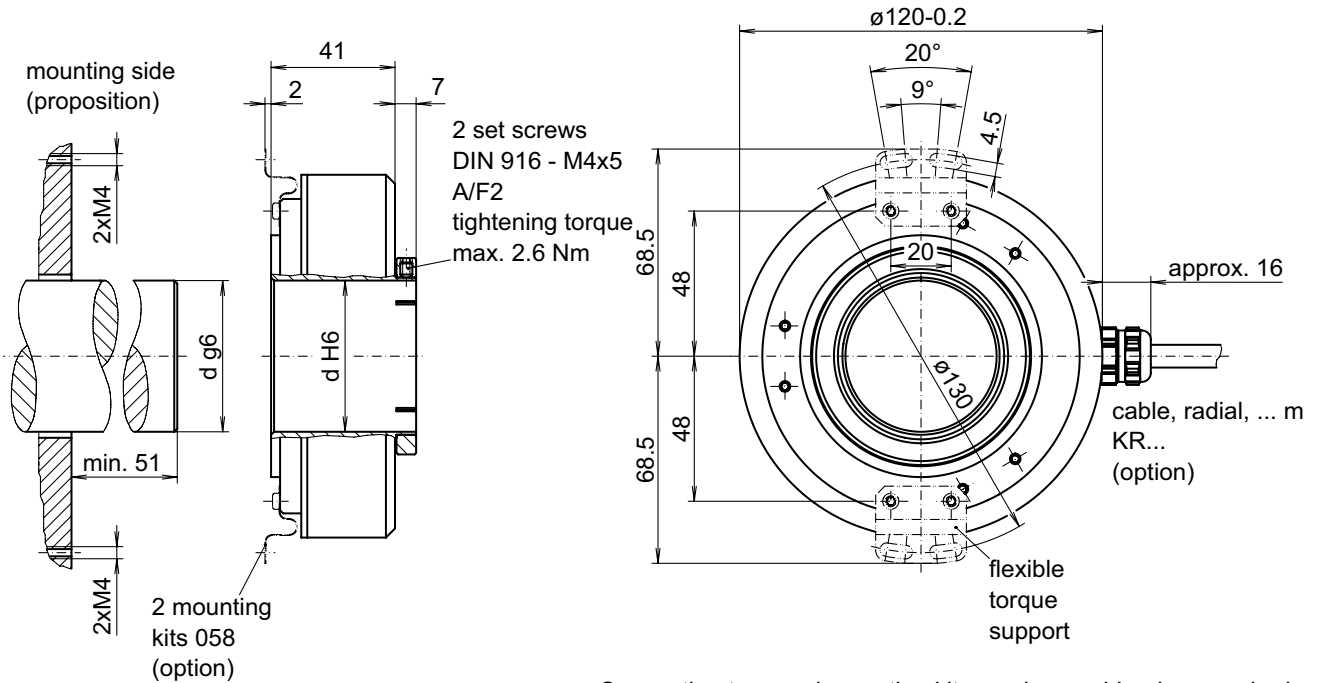
Outputs	8...30 VDC / $U_{OUT} = 5$ V
Output level High	$\geq 2.4$ V
Output level Low	$\leq 0.5$ V
Load	$\leq 30$ mA

# Incremental encoders

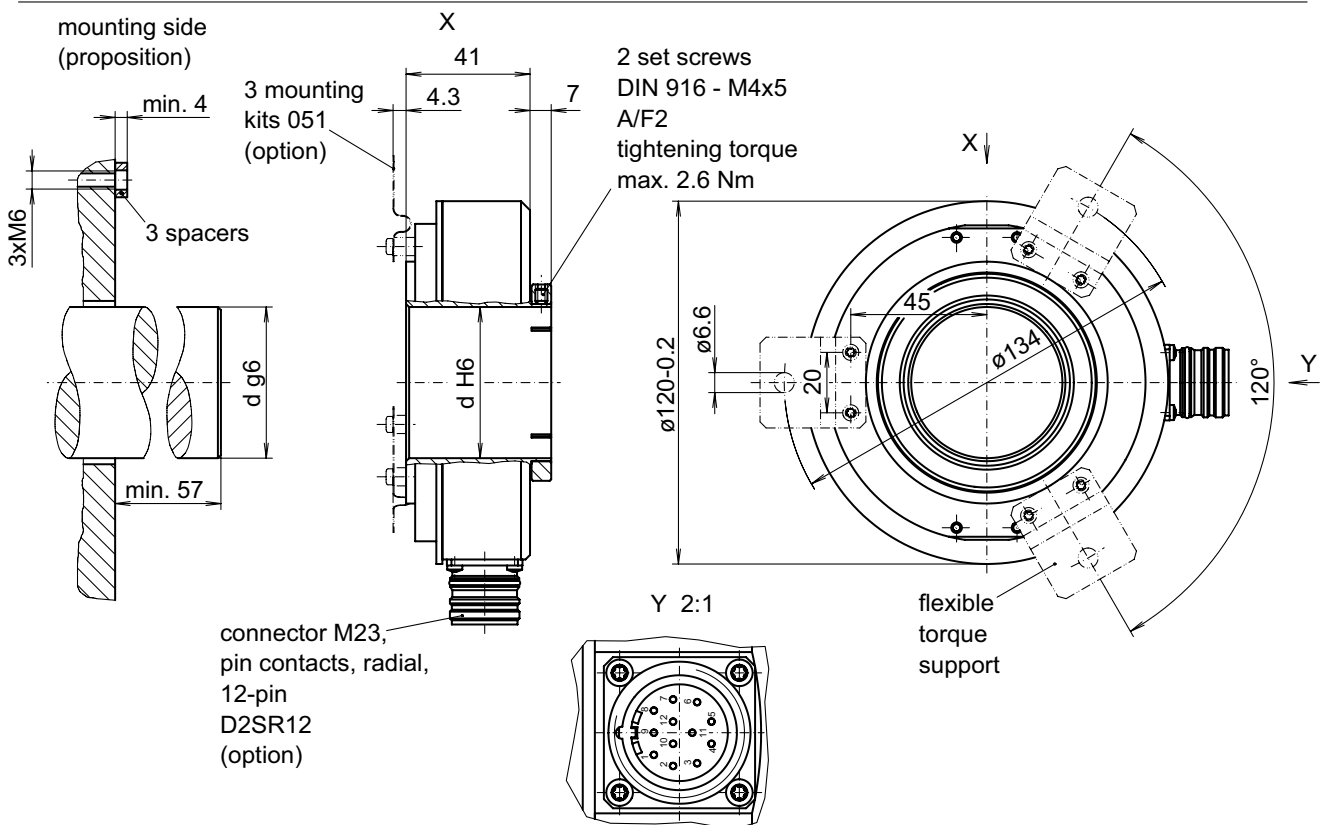
Through hollow shaft  $\varnothing 30$  to  $\varnothing 50$  mm  
1024...10000 pulses per revolution

ITD61H00

## Dimensions



Connection type and mounting kits can be combined as required.



Connection type and mounting kits can be combined as required.

Subject to modification in technic and design. Errors and omissions excepted.

042- 2