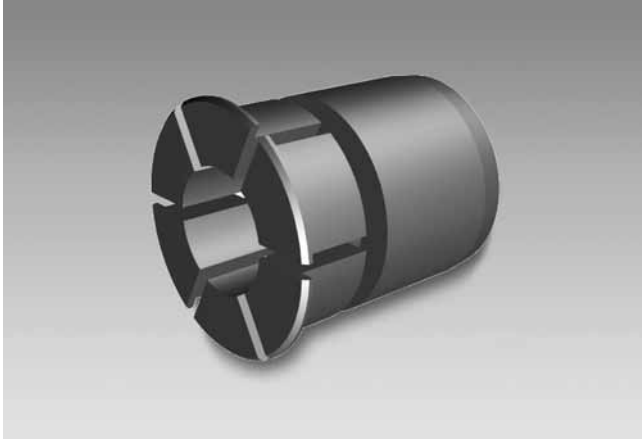


Accessories

Mounting accessories

Reducer insert $\varnothing 25-14.0$



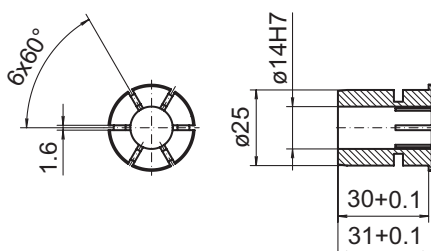
Description

Allows the mounting on diameter 14 mm on the motor shaft.
Basis for the reducer insert is a hollow shaft diameter of 25 mm. Subsequent replacement without tools.
Outer diameter: 25 mm
Material: Aluminium

Part number

11095286 Reducer insert $\varnothing 25/14.0$ mm

Dimensions



Z01535