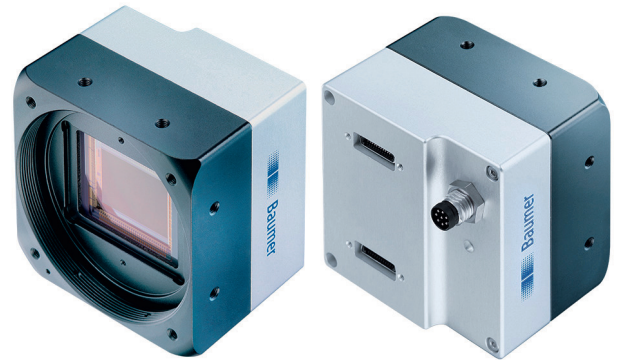


**overview**

- 7920 × 6004 px
- ams (CMOSIS) CMV50000
- 35 mm CMOS
- 15 fps
- Camera Link® Full
- available



**technical data**

**sensor information**

sensor	ams (CMOSIS) CMV50000
resolution	7920 × 6004 px
exposure time	0,1 ... 1000 ms
pixel size	4.6 × 4.6 µm
shutter type	Global shutter
sensor type	35 mm CMOS

**acquisition formats**

image formats, interface frame rate max.	Full Frame, 7920 × 6004 px, max. 15 fps Binning 2×2, 3960 × 3002 px, max. 15 fps Binning 1×2, 7920 × 3002 px, max. 15 fps Binning 2×1, 3960 × 6004 px, max. 15 fps
pixel formats	Mono8 Mono12

**image preprocessing**

analog controls	Gain (0 ... 18 dB) Offset (0 ... 255 LSB 12 Bit)
color models	Mono

**camera features**

synchronization	free running trigger
trigger sources	Hardware software ActionCommand
trigger delay	0 ... 2 sec, tracking and buffering of up to 256 trigger signals

**camera features**

sequencer	Automated control for series of images using different sets of parameters
sequencer parameter	exposure time gain factor output ROI Offset x ROI Offset y
digital inputs	1 input line
digital outputs	1 output line
internal image buffer	512 MB

**interfaces and connectors**

data interface	Camera Link® Full, connector: 2 x Standard SDR26 (Mini CL)
process interface	M8 / 8 pins
power supply	M8 / 8 pins

**mechanical data**

lens mount	M58-mount (F-mount, M42, C-mount via adapter)
width	60 mm
height	60 mm
depth	43,05 mm
weight	≤ 235 g (M58-mount)
material	housing: aluminum

**electrical data**

voltage supply range +Vs	12 ... 24 V DC (external power supply) 38 ... 57 V (PoCL)
--------------------------	--

# LXC-500M

Camera Link®, 48 Megapixel, Monochrome

Article number: 11188975

## technical data

### electrical data

power consumption	approx. 10 W @ 24 VDC (sequential readout)
	approx. 12 W @ 12 VDC (PoCL)

### non-volatile memory

flash memory size	128 kB
-------------------	--------

### environmental conditions

operating temperature	+5 ... +60 °C @ T = measurement point
-----------------------	---------------------------------------

### environmental conditions

humidity	10 ... 90 % (non-condensing)
protection class	IP 40

### conformity

conformity	CE RoHS EAC
------------	-------------------

## dimension drawing

