

# Totalizers mechanic

## Meter counter

Display 5 digits, manual reset (zero) by lever

### M 310



M 310 - Meter counter

#### Features

- Meter counter
- Adding and/or subtracting
- Display 5-digits
- Reset by lever

#### Technical data - mechanical design

Function	Meter counter
Display	White numbers on black Decimal digits in red
Number of digits	5-digits
Digit height	4.5 mm
Zero setting	Manual by reset lever. Do not let snap or make jerky movements.
Count mode	Adding in a rotational direction to be indicated, subtracting in reverse direction. 5 revs. = 10 counts
Drive shaft	Both sides, $\varnothing 4$ mm
Measuring speed	<200 m/min (measuring wheel)
Measuring accuracy	1 dm
Measuring range	9999.9 m
Ambient temperature	0...+60 °C
Housing type	Surface mount housing with mounting plate
Housing colour	Grey
Dimensions W x H x L	69 x 48 x 28 mm
Dimensions mounting plate	80 x 48 mm
Mounting type	Base plate, 6 long mounting holes
Weight approx.	130 g
Materials	Housing: Hostaform POM, grey Base plate: steel zinc-coated

# Totalizers mechanic

Meter counter

Display 5 digits, manual reset (zero) by lever

M 310

**Part number**

M 310. 010 A 06

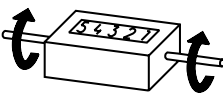
010 Zero setting  
 With reset lever  
 A Housing  
 Surface mount housing, grey  
 06 Count mode / drive  
 5 revolutions = 10 digits =  
 1.0 m / drive shaft on both sides  
 C Display / direction of rotation  
 5 digits 9999.9 / I  
 D 5 digits 9999.9 / II

**Accessories**

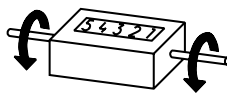
**Measuring wheels**

- MR211.04A Circumf. 20 cm, knurled aluminium
- MR241.04D Circumf. 20 cm, smooth Hytrel TPE-E
- MR261.04A Circumf. 20 cm, knopped rubber NBR Nitril
- MR291.04D Circumf. 20 cm, grooved Hytrel TPE-E

**Direction of strokes and rotation**



Away from user  
 Direction of rotation or  
 stroke direction I



Toward user  
 Direction of rotation or  
 stroke direction II

**Dimensions**

