

# Preset counters mechanic

## Revolution counter, subtracting

### Display 4-digits, manual reset by button

UE102



UE102 - Revolution counter

#### Features

- Preset counter with one preset
- Revolution counter
- Subtracting
- Display 4-digits
- With reset button
- Surface mount housing

#### Technical data - electrical ratings

Preset	1 preset
Preset setting	Press reset button and hold. Enter desired value in any order. Release reset button.
Trigger / end contact	At 0000: As momentary contact: Contact duration dependent on speed e.g. 100 ms, at 10000 rpm and 50 revolutions = 1 digit At 9999: As permanent contact, contact remains until reset. If no reset takes place, the contact switches back at 8999.
Trigger / precontact	Preset number as momentary contact. End contact as permanent contact
Output contact	Change-over contact
Switching voltage	230 VAC / VDC
Switching current	2 A
Switching capacity	100 VA / 30 W
Spark extinguisher	Recommended for inductive load

#### Technical data - mechanical design

Function	Revolution counter with preset
Display	White numbers on black
Number of digits	4-digits
Digit height	5.5 mm
Count mode	Subtracting in a rotational direction to be indicated, adding in reverse direction
Drive shaft	Both sides, $\varnothing 4$ mm
Reset	Manual by button to preset
Operating speed	$\leq 10000$ rpm
Operating torque	$\leq 0.8$ Nm (with 1 rev. = 1 count) $\leq 0.4$ Nm (with 50 rev. = 1 count)
Measuring range	See part number
Ambient temperature	0...+60 °C
Housing type	Surface mount housing
Housing colour	Grey
Dimensions W x H x L	60 x 62 x 68.5 mm
Dimensions mounting plate	60 x 62 mm 60 x 85 mm
Mounting type	Surface mount housing
Weight approx.	350 g
Material	Housing: Hostaform POM, grey
Connection	Cable 0.3 m, 3-pin Cable 1 m, 3-pin

# Preset counters mechanic

## Revolution counter, subtracting

### Display 4-digits, manual reset by button

UE102

#### Part number

UE102.0   0

#### Measuring range / trigger

- A 9999 m / Contact at 0000
- D 8999 m / Contact at 9999
- G 8999 m / Contact at 9999, with precontact

#### Count mode /Direction of rotation

- 05 1 rev. = 10 digits / I
- 06 1 rev. = 10 digits / II
- 11 1 rev. = 1 digit / I
- 12 1 rev. = 1 digit / II

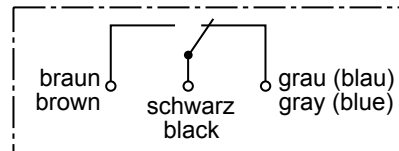
#### Housing

- A Grey, cable 0.3 m / without precontact / mounting plate 60 x 62 mm
- E Grey, cable 1.0 m / with precontact / mounting plate 60 x 62 mm
- C Grey, cable 0.3 m / without precontact / mounting plate 60 x 85 mm

#### Trigger

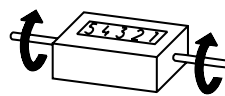
- 1 Momentary contact at 0000
  - 2 Permanent contact at 9999
  - 3 Permanent contact at 9999, permanent precontact (\*) as momentary contact
- (\*) indicate desired value when ordering

#### Connection diagram

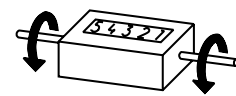


The connection diagram illustrates the ready status (counter preselected).

#### Direction of strokes and rotation



Away from user  
Direction of rotation I



Towards user  
Direction of rotation II

# Preset counters mechanic

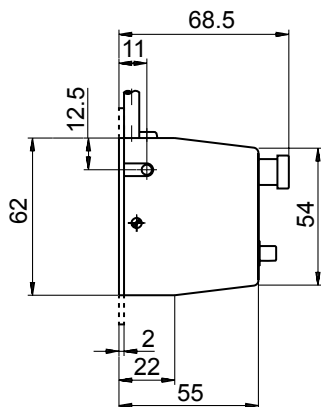
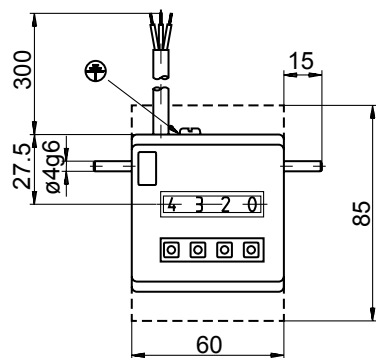
## Revolution counter, subtracting

### Display 4-digits, manual reset by button

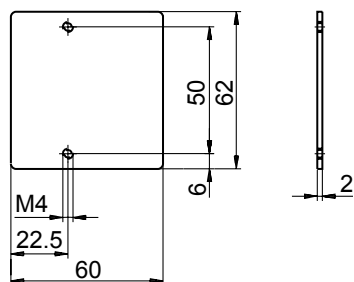
## UE102

### Dimensions

#### UE102



#### Mounting plate 60 x 62 mm



#### Mounting plate 60 x 85 mm

