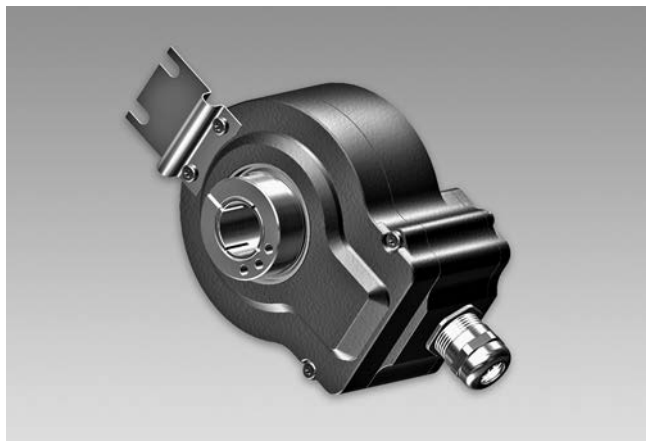


# Incremental encoders

Cone shaft  $\varnothing 17$  mm (1:10)

250...2500 pulses per revolution

## HOG 75 K



HOG 75

### Features

- Cone shaft  $\varnothing 17$  mm (1:10)
- Optical sensing method
- Compact, robust aluminium housing
- Inside connecting terminals
- Output stage HTL or TTL
- Output stage TTL with regulator UB 9...26 VDC
- Especially high resistance to vibrations
- Hybrid bearing for extended service life (HOG 75 KC)

### Technical data - electrical ratings

Voltage supply	9...26 VDC 5 VDC $\pm 5$ %
Consumption w/o load	$\leq 100$ mA
Pulses per revolution	250...2500
Phase shift	$90^\circ \pm 20^\circ$
Duty cycle	40...60 %
Reference signal	Zero pulse, width $90^\circ$
Sensing method	Optical
Output frequency	$\leq 120$ kHz
Output signals	K1, K2, K0 + inverted
Output stages	HTL TTL/RS422
Interference immunity	EN 61000-6-2
Emitted interference	EN 61000-6-3
Approvals	CE, UL approval / E256710

### Technical data - mechanical design

Size (flange)	$\varnothing 75$ mm
Shaft type	$\varnothing 17$ mm (cone shaft 1:10)
Admitted shaft load	$\leq 80$ N axial $\leq 150$ N radial
Protection DIN EN 60529	IP 56
Operating speed	$\leq 12000$ rpm (mechanical)
Starting torque	$\leq 4$ Ncm
Rotor moment of inertia	180 gcm <sup>2</sup>
Materials	Housing: aluminium Shaft: stainless steel
Operating temperature	-30...+85 °C
Resistance	IEC 60068-2-6 Vibration 48 g, 10-2000 Hz IEC 60068-2-27 Shock 200 g, 6 ms
Explosion protection	II 3 G Ex nA IIC T4 Gc (gas) II 3 D Ex tc IIIC T135°C Dc (dust)
Connection	Connecting terminal
Weight approx.	860 g

Subject to modification in technic and design. Errors and omissions excepted.

# Incremental encoders

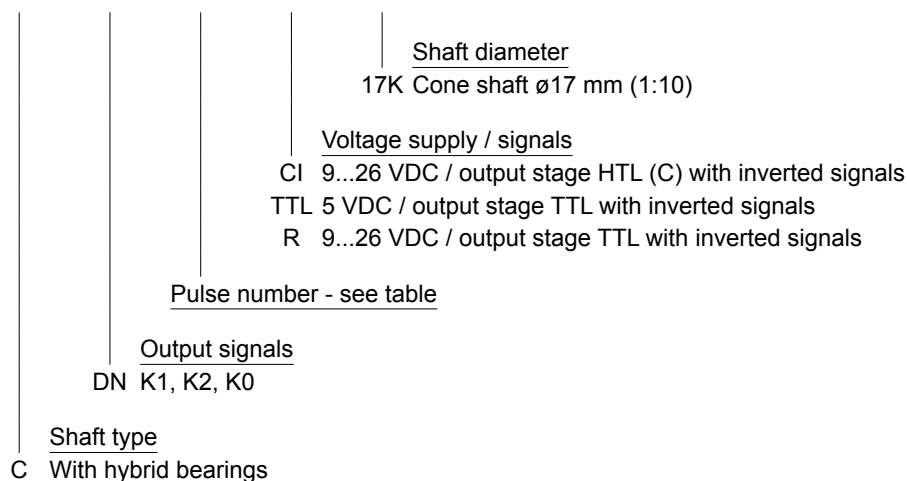
## Cone shaft $\varnothing 17$ mm (1:10)

### 250...2500 pulses per revolution

HOG 75 K

#### Part number

HOG75K **C** **DN** **17K**



#### Pulse number

250	500	720	1200	2048
256	512	1024	1250	2500

Other pulse numbers on request.

#### Accessories

##### Connectors and cables

HEK 8	Sensor cable for encoders
-------	---------------------------

##### Mounting accessories

11077087	Mounting and dismounting set
11043628	Torque arm M6, length 67-70 mm
11004078	Torque arm M6, length 120-130 mm (shortenable $\geq 71$ mm)
11002915	Torque arm M6, length 425-460 mm (shortenable $\geq 131$ mm)
11054917	Torque arm M6 insulated, length 67-70 mm
11072795	Torque arm M6 insulated, length 120-130 mm (shortenable $\geq 71$ mm)
11082677	Torque arm M6 insulated, length 425-460 mm (shortenable $\geq 131$ mm)
11077197	Mounting kit for torque arm size M6 and earthing strap

##### Diagnostic accessories

11075858	Analyzer for encoders HENQ 1100
----------	---------------------------------

Subject to modification in technic and design. Errors and omissions excepted.

# Incremental encoders

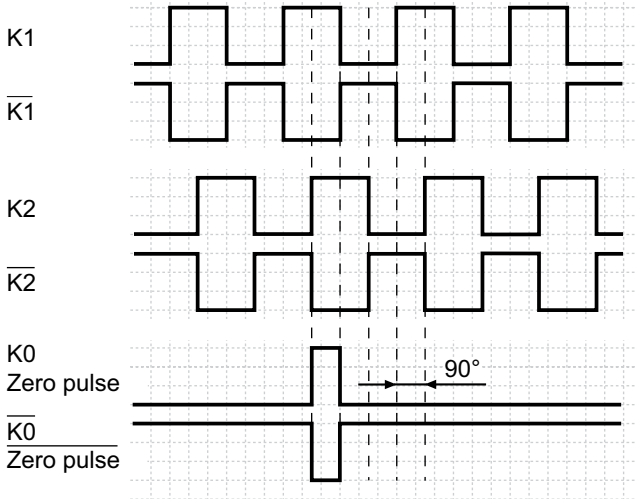
Cone shaft  $\varnothing 17$  mm (1:10)

250...2500 pulses per revolution

## HOG 75 K

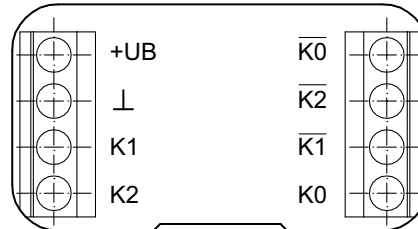
### Output signals

At positive rotating direction



### Terminal assignment

View A - Connecting terminal



### Terminal significance

+UB	Voltage supply (for the device)
⊥; ↓; GND; 0 V	Ground (for the signals)
⊕; ↗	Earth ground (housing)
K1; A; A+	Output signal channel 1
K1-bar; A-bar; A-	Output signal channel 1 inverted
K2; B; B+	Output signal channel 2 (offset by 90° to channel 1)
K2-bar; B-bar; B-	Output signal channel 2 (offset by 90° to channel 1) inverted
K0; C; R; R+	Zero pulse (reference signal)
K0-bar; C-bar; R-bar; R-	Zero pulse (reference signal) inverted
dnu	Do not use

