

# Totalizers mechanic

## Revolution counter

Display 7-digits, reset by key

### U 400



U 400 - Revolution counter

#### Features

- Revolution counter
- Adding
- Display 7-digits
- Reset by key

#### Technical data - mechanical design

Function	Revolution counter
Display	White numbers on black
Number of digits	7-digits
Digit height	7 mm
Zero setting	Key reset by detachable key either at left or right shaft.
Count mode	Adding in a rotational direction to be indicated, subtracting in reverse direction or always adding. 1 rev. = 1 count
Drive shaft	Both sides, $\varnothing 7$ mm
Operating speed	$\leq 1000$ rpm
Measuring range	9 999 999
Ambient temperature	0...+60 °C
Housing type	Surface mount housing with mounting plate
Housing colour	Grey
Dimensions W x H x L	106 x 64 x 45 mm
Dimensions mounting plate	120 x 64 mm
Mounting type	Base plate, 4 long mounting holes
Weight approx.	350 g
Materials	Housing: Hostaform POM, grey Base plate: steel zinc-coated

# Totalizers mechanic

## Revolution counter

### Display 7-digits, reset by key

U 400

#### Part number

U 400.0   0 A    

#### Display / direction of rotation

- C 7-digits 9999999 / I
- D 7-digits 9999999 / II

#### Count mode / drive

- 01 1 revolution = 1 digit / drive shaft at right, always adding
- 02 1 revolution = 1 digit / drive shaft at right adding / subtracting

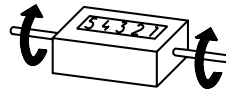
#### Housing

- A Surface mount housing, grey

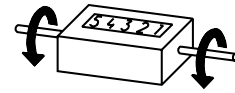
#### Count mode

- 1 Adding in a rotational direction to be indicated, subtracting in reverse direction only first digit down to 0 or always adding
- 2 Adding - subtracting

#### Direction of strokes and rotation



Away from user  
Direction of rotation or stroke direction I



Towards user  
Direction of rotation or stroke direction II

#### Dimensions

