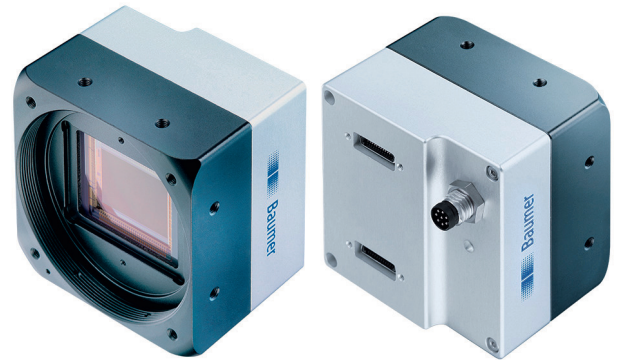


**overview**

- 5120 × 5120 px
- ON Semiconductor PYTHON 25K
- APS-H CMOS
- 32 fps
- Camera Link® Full
- available



**technical data**

sensor information		camera features	
sensor	ON Semiconductor PYTHON 25K	sequencer parameter	exposure time gain factor output ROI Offset x ROI Offset y
resolution	5120 × 5120 px	digital inputs	1 input line
exposure time	0,03 ... 1000 ms	digital outputs	1 output line
color filter	RGB Bayer Mosaic	internal image buffer	512 MB
pixel size	4.5 × 4.5 µm	interfaces and connectors	
shutter type	Global shutter	data interface	Camera Link® Full, connector: 2 x Standard SDR26 (Mini CL)
sensor type	APS-H CMOS	process interface	M8 / 8 pins
acquisition formats		power supply	M8 / 8 pins
image formats, interface frame rate max.	Full Frame, 5120 × 5120 px, max. 32 fps	mechanical data	
pixel formats	BayerGB8 BayerGB10	lens mount	M58-mount (F-mount, M42, C-mount via adapter)
image preprocessing		width	60 mm
analog controls	Gain (0 ... 23,5 dB) Offset (0 ... 63 LSB 10 Bit)	height	60 mm
color models	Raw Bayer	depth	45,12 mm
color processing	NA	weight	≤ 235 g (M58-mount)
camera features		material	housing: aluminum
synchronization	free running trigger	electrical data	
trigger sources	Hardware software ActionCommand	voltage supply range +Vs	12 ... 24 V DC (external power supply) 38 ... 57 V (PoCL)
trigger delay	0 ... 2 sec, tracking and buffering of up to 256 trigger signals	power consumption	approx. 7,8 W @ 24 VDC approx. 7,8 W @ 12 VDC (PoCL)
sequencer	Automated control for series of images using different sets of parameters		

# LXC-250C

Camera Link®, 25 Megapixel, Color

Article number: 11162827

## technical data

### non-volatile memory

flash memory size 128 kB

### environmental conditions

operating temperature +5 ... +66 °C @ T = measurement point

humidity 10 ... 90 % (non-condensing)

### environmental conditions

protection class IP 40

### conformity

conformity CE  
RoHS  
EAC

## dimension drawing

