

# Incremental encoders

## Solid shaft $\varnothing 6$ mm with synchro flange

### 1000...10000 pulses per revolution

#### ITD 21 B14 Y 1



ITD 21 B14 Y 1 with synchro flange

#### Technical data - electrical ratings

Voltage supply	5 VDC $\pm 5$ % 8...30 VDC
Reverse polarity protection	Yes
Consumption w/o load	$\leq 100$ mA
Pulses per revolution	1000...10000
Reference signal	Zero pulse, width $90^\circ$
Sensing method	Optical
Output frequency	$\leq 300$ kHz (TTL) $\leq 160$ kHz (HTL)
Output signals	A, B, N + inverted
Output stages	TTL linedriver (short-circuit proof) HTL push-pull (short-circuit proof)
Interference immunity	DIN EN 61000-6-2
Emitted interference	DIN EN 61000-6-3

#### Features

- Encoder with solid shaft  $\varnothing 6$  mm
- Max. 10000 pulses per revolution
- Optical sensing method
- Centering alignment  $\varnothing 50$  mm, mounting screw hole circle  $\varnothing 68$  mm
- Industrial standard
- TTL or HTL output signals
- Flange connector radial

#### Optional

- Extended operating temperature range

#### Technical data - mechanical design

Size (flange)	$\varnothing 58$ mm
Shaft type	$\varnothing 6$ mm solid shaft (synchro flange)
Admitted shaft load	$\leq 20$ N axial $\leq 40$ N radial
Flange	Synchro flange
Protection DIN EN 60529	IP 65
Operating speed	$\leq 12000$ rpm
Starting torque	$\leq 0.01$ Nm (+20 °C)
Materials	Housing: aluminium, black, powder-coated Shaft: stainless steel
Operating temperature	-20...+70 °C -20...+100 °C
Relative humidity	90 % non-condensing
Resistance	DIN EN 60068-2-6 Vibration 10 g, 55-2000 Hz DIN EN 60068-2-27 Shock 30 g, 11 ms
Connection	Connector M23 type 2, 12-pin
Weight approx.	240 g

# Incremental encoders

Solid shaft ø6 mm with synchro flange  
1000...10000 pulses per revolution

ITD 21 B14 Y 1

## Part number

ITD 21 B14 Y 1 

		NI	D2SR12		6	IP65
--	--	----	--------	--	---	------

					6	IP65
						<u>Protection</u> IP65 IP 65
					6	<u>Flange / Solid shaft</u> Synchro flange / ø6 mm
						<u>Operating temperature</u> S -20...+70 °C E -20...+100 °C
						<u>Connection</u> D2SR12 Flange connector type 2, pin contacts, radial, 12-pin
						<u>Output signals</u> NI A, A inv, B, B inv, 0, 0 inv
						<u>Voltage supply / signals</u> T 5 VDC / TTL level, linedriver H 8...30 VDC / HTL level, push-pull R 8...30 VDC / TTL level, linedriver

Pulse number - see table

## Pulse number

1000	1440	2048	4000	7200
1024	1500	2500	4096	8192
1200	1800	3000	5000	9000
1250	2000	3600	6000	10000

## Accessories

### Connectors and cables

11072792	Connector M23 - S2BG12, 1 m cable (incremental)
----------	---

### Mounting accessories

11065545	Set of eccentric fixings type A
----------	---------------------------------

# Incremental encoders

## Solid shaft $\varnothing 6$ mm with synchro flange

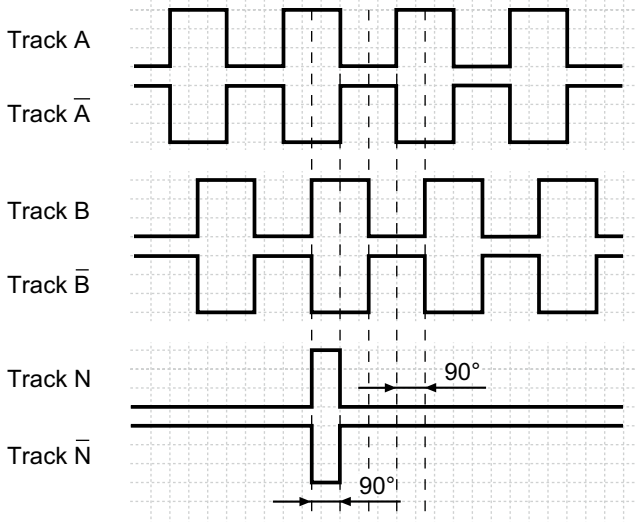
### 1000...10000 pulses per revolution

#### ITD 21 B14 Y 1

#### Output signals

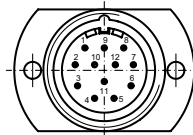
Clockwise rotation when looking at the mounting side.

NI-Output signals



#### Terminal assignment

Connector	Assignment
Pin 5	Track A
Pin 6	Track A inv.
Pin 8	Track B
Pin 1	Track B inv.
Pin 3	Track N
Pin 4	Track N inv.
Pin 12	UB
Pin 10	GND
Pin 2	UB-Sense
Pin 11	GND-Sense
Pin 9	-
Pin 7	-

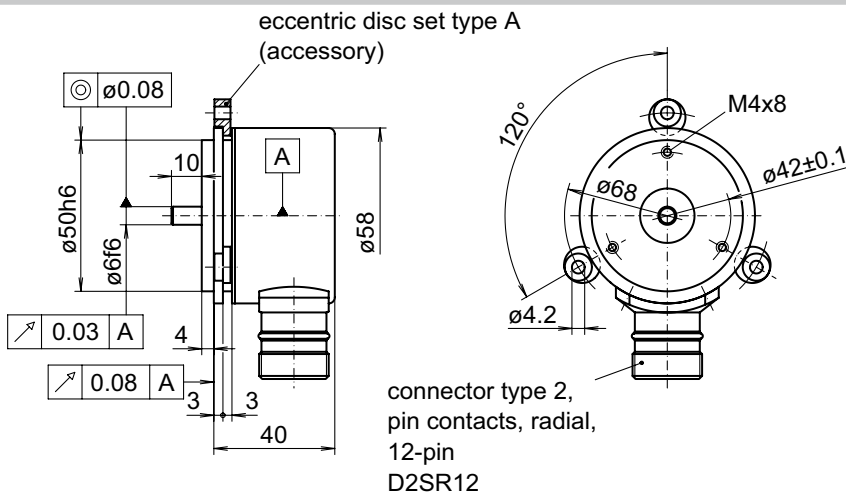


#### Trigger level

Outputs	Linedriver
Output level High	$\geq 2.4$ V
Output level Low	$\leq 0.5$ V
Load	$\leq 70$ mA

Outputs	Push-pull short-circuit proof
Output level High	$\geq UB - 3$ V
Output level Low	$\leq 1.5$ V
Load	$\leq 70$ mA

#### Dimensions



027- 4 Y 1

# Incremental encoders

Solid shaft  $\varnothing 6$  mm with synchro flange  
1000...10000 pulses per revolution

ITD 21 B14 Y 1

---