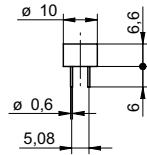


Inductive sensors NAMUR

IFR 10.82E05

dimension drawing



general data

mounting type	flush
nominal sensing distance S_n	2 mm
approvals/certificates	ATEX 3G

electrical data

switching frequency	< 2 kHz
normal operating voltage	8,2 VDC
voltage supply range +Vs	5 ... 30 VDC
current consumption undamped	> 4 mA
current consumption damped	< 1 mA
current consumption max. (no load)	10 mA
output circuit	NAMUR
residual ripple	< 10 % Vs

mechanical data

type	cylindrical smooth
housing material	PBT
dimension	10 mm
housing length	6,6 mm
connection types	pins

ambient conditions

operating temperature	-25 ... +75 °C
protection class	IP 67

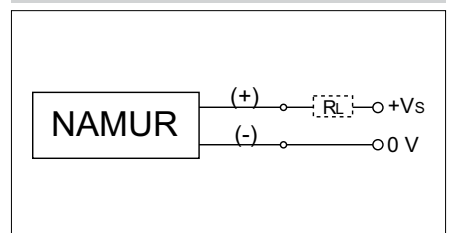
safe maximum values

marking	II 3G Ex ic IIC T5 Gc X
current I_i	< 20 mA
voltage U_i	< 13 VDC
power P_i	< 0,065 W
internal capacitance C_i	< 100 nF
internal inductance L_i	< 0,1 mH
operating temperature T_a (temp. class T5)	-20 ... +60 °C

photo



connection diagram



- circuit board mountable

Inductive sensors NAMUR**IFR 10.82E05****Safe maximum values**

Marking	II 3G Ex ic IIC T5 Gc X
Operating temperature Ta (Temp. T5)	-20 ... +60 °C

Special conditions „X“

- Device and connection cable must be installed so that they are protected from UV light