

# Sine encoders

Through hollow shaft  $\varnothing 14...26$  mm

720...5000 sinewave cycles per turn

## HOGS 75



HOGS 75

### Technical data - electrical ratings

Voltage supply	5 VDC $\pm 10$ % 9...26 VDC
Consumption w/o load	$\leq 90$ mA
Sinewave cycles per revolution	720...5000
Reference signal	Zero pulse, width $90^\circ$
Sensing method	Optical
Output signals	K1, K2, K0 + inverted
Output stages	SinCos 1 Vpp
Difference of SinCos amplitude	$\leq 20$ mV
Harmonics typ.	-50 dB
DC offset	$\leq 20$ mV
Bandwidth	200 kHz (-3 dB)
Interference immunity	EN 61000-6-2
Emitted interference	EN 61000-6-3
Approvals	CE, UL approval / E256710

### Features

- Compact, robust aluminium housing
- Inside connecting terminals
- SinCos output-signals 1 Vpp
- Low harmonic content (patented LowHarmonics technology)
- Especially high resistance to vibrations
- Hybrid bearing for extended service life (HOGS 75 C)

### Optional

- Cable output

### Technical data - mechanical design

Size (flange)	$\varnothing 75$ mm
Shaft type	$\varnothing 14...26$ mm (through hollow shaft)
Admitted shaft load	$\leq 80$ N axial $\leq 150$ N radial
Protection DIN EN 60529	IP 56
Operating speed	$\leq 10000$ rpm (mechanical)
Starting torque	$\leq 4$ Ncm
Rotor moment of inertia	180 gcm <sup>2</sup>
Materials	Housing: aluminium Shaft: stainless steel
Operating temperature	-20...+70 °C
Resistance	IEC 60068-2-6 Vibration 48 g, 10-2000 Hz IEC 60068-2-27 Shock 200 g, 6 ms
Explosion protection	II 3 G Ex nA IIC T4 Gc (gas) II 3 D Ex tc IIIC T135°C Dc (dust)
Connection	Connecting terminal
Weight approx.	580 g

Subject to modification in technic and design. Errors and omissions excepted.

# Sine encoders

## Through hollow shaft $\varnothing 14...26$ mm

### 720...5000 sinewave cycles per turn

HOGS 75

#### Part number

HOGS75 

--	--	--	--	--	--	--	--	--

#### Mounting type

KLR A Clamping ring in front (drive side)  
KLR B Clamping ring rear

#### Shaft diameter

12H7 Through hollow shaft  $\varnothing 12$  mm  
14H7 Through hollow shaft  $\varnothing 14$  mm  
16H7 Through hollow shaft  $\varnothing 16$  mm  
18H7 Through hollow shaft  $\varnothing 18$  mm  
19H7 Through hollow shaft  $\varnothing 19$  mm  
20H7 Through hollow shaft  $\varnothing 20$  mm  
22H7 Through hollow shaft  $\varnothing 22$  mm  
24H7 Through hollow shaft  $\varnothing 24$  mm  
25H7 Through hollow shaft  $\varnothing 25$  mm  
26H7 Through hollow shaft  $\varnothing 26$  mm

#### Voltage supply

- 5 VDC  
R 9...26 VDC

#### Sinewave cycles - see table

#### Output signals

DN K1, K2, K0 + inverted

#### Shaft type

Standard ball bearings

C With hybrid bearings (only with shaft diameter 16 mm and clamping ring in front)

#### Sinewave cycles

720 | 1024 | 2048 | 5000

#### Accessories

##### Connectors and cables

HEK 8 Sensor cable for encoders

##### Mounting accessories

11043628 Torque arm M6, length 67-70 mm

11004078 Torque arm M6, length 120-130 mm  
(shortenable  $\geq 71$  mm)

11002915 Torque arm M6, length 425-460 mm  
(shortenable  $\geq 131$  mm)

11054917 Torque arm M6 insulated, length 67-70 mm

11072795 Torque arm M6 insulated, length 120-130 mm  
(shortenable  $\geq 71$  mm)

11082677 Torque arm M6 insulated, length 425-460 mm  
(shortenable  $\geq 131$  mm)

##### Diagnostic accessories

11075858 Analyzer for encoders HENQ 1100

11075880 Analyzer for encoders HENQ 1100 with a power pack

# Sine encoders

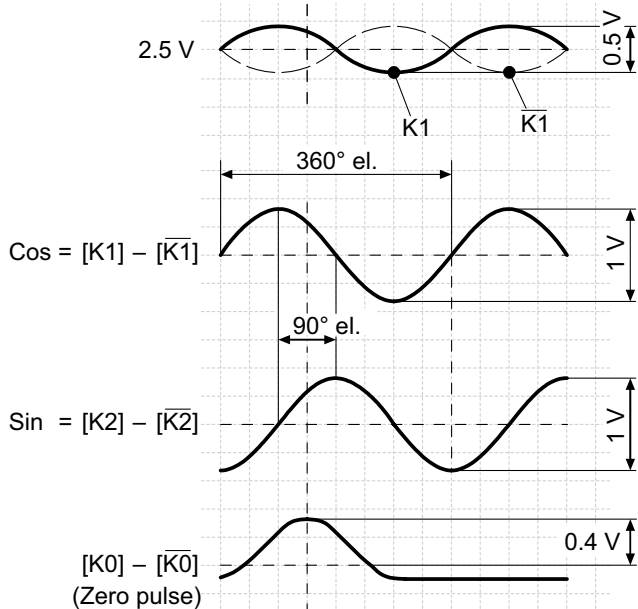
Through hollow shaft  $\varnothing 14...26$  mm

720...5000 sinewave cycles per turn

## HOGS 75

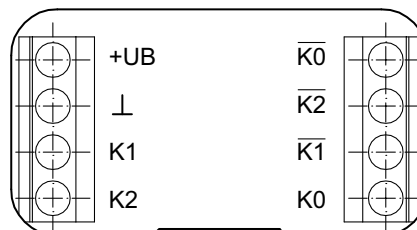
### Output signals

At positive rotating direction



### Terminal assignment

View A - Connecting terminal



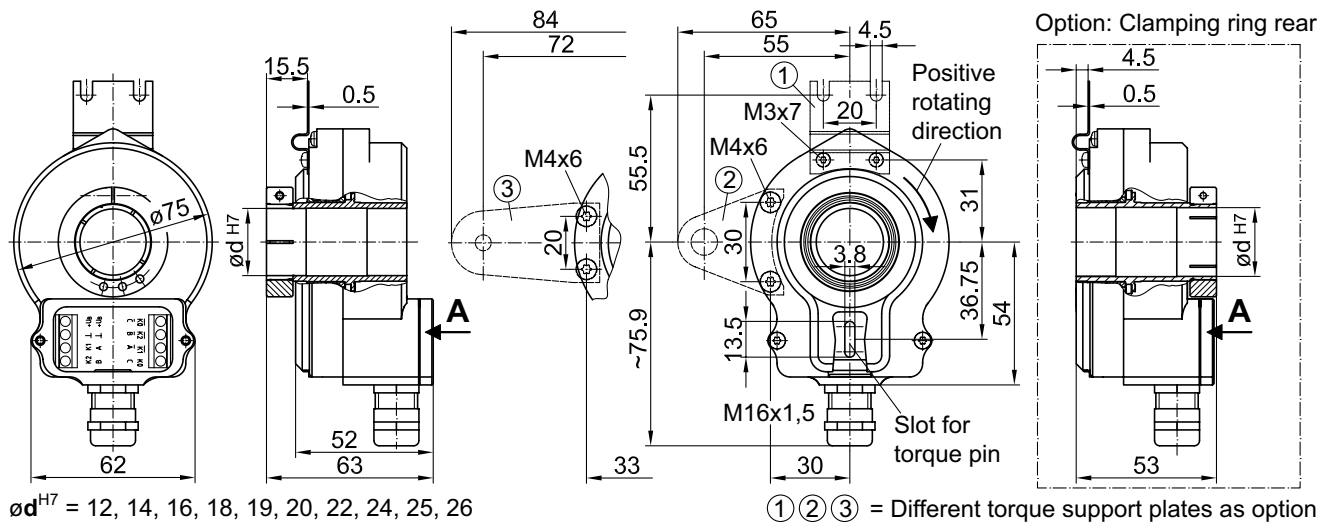
# Sine encoders

Through hollow shaft  $\varnothing 14...26$  mm  
720...5000 sinewave cycles per turn

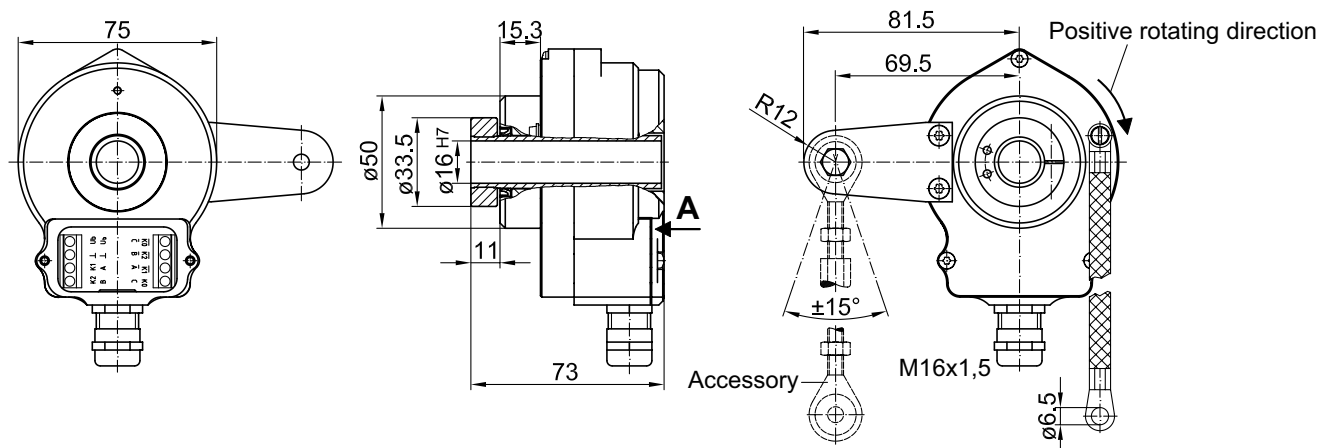
## HOGS 75

### Dimensions

#### HOGS 75 - With through hollow shaft without hybrid bearings



#### HOGS 75 C - With through hollow shaft and hybrid bearings



Subject to modification in technic and design. Errors and omissions excepted.