

# Accessories

## Mounting accessories

### Insulating sleeve EIL580 - hollow shaft



#### Description

Insulation sleeves reliably protect the encoder against damage by shaft currents.  
For drive shafts  $\varnothing 10$  or  $\varnothing 12$  mm.

Basic product is encoder OptoPulse® EIL580 in hollow shaft design  $\varnothing 12$  or  $\varnothing 14$  mm.

Later exchange without any tools.  
Material: Glass-fiber reinforced plastic

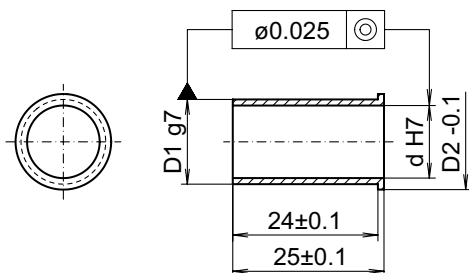
#### Part number

11116921	Insulating sleeve $\varnothing 10$ mm/ $\varnothing 12$ mm/25 mm long
11116923	Insulating sleeve $\varnothing 12$ mm/ $\varnothing 14$ mm/25 mm long

#### Suitable for

ATD2AH00, EIL580 - blind hollow shaft,  
EIL580 - blind hollow shaft - Option 6301,  
EIL580 - through hollow shaft,  
EIL580 - through hollow shaft - Option 6301,  
EIL580P - blind hollow shaft,  
EIL580P - through hollow shaft,  
ExEIL580 - blind hollow shaft,  
ExEIL580 - through hollow shaft,  
ExEIL580P - blind hollow shaft,  
ExEIL580P - through hollow shaft, ITD21H00, ITD22H00

#### Dimensions



d H7	D1 g7	D2 -0.1
$\varnothing 10$	$\varnothing 12$	$\varnothing 13.8$
$\varnothing 12$	$\varnothing 14$	$\varnothing 15.8$