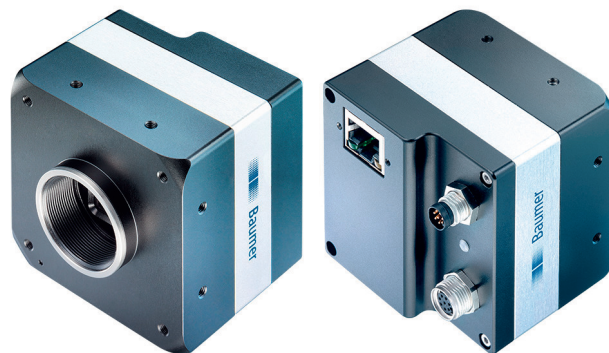


overview

- 2048 × 2048 px
- ams (CMOSIS) CMV4000 V3
- 1" CMOS
- 74 fps
- Gigabit Ethernet
- available



technical data

sensor information

sensor	ams (CMOSIS) CMV4000 V3
resolution	2048 × 2048 px
exposure time	0,04 ... 1000 ms
pixel size	5.5 × 5.5 µm
shutter type	Global shutter
sensor type	1" CMOS

acquisition formats

image formats, interface frame rate max.	Full Frame, 2048 × 2048 px, max. 29 fps
image formats, acquisition frame rate max. (Burst Mode)	Full Frame, 2048 × 2048 px, max. 74 fps
pixel formats	Mono8 Mono10

image preprocessing

analog controls	Gain (0 ... 12 dB) Offset (0 ... 63 LSB 10 Bit)
color models	Mono
image processing	JPEG

camera features

synchronization	free running trigger
trigger sources	Hardware software ActionCommand
trigger delay	0 ... 2 sec, tracking and buffering of up to 512 trigger signals

camera features

sequencer	Automated control for series of images using different sets of parameters
sequencer parameter	exposure time gain factor ROI Offset x ROI Offset y
digital inputs	1 input line
digital outputs	3 output lines
internal image buffer	512 MB

interfaces and connectors

data interface	Gigabit Ethernet, Transfer rate 1000 Mbits/sec, Connector: 8P8C Modular Jack (RJ45), screwable type
process interface	M8 / 8 pins (2x)
power supply	M8 / 8 pins

mechanical data

lens mount	C-mount
width	60 mm
height	60 mm
depth	52,4 mm
weight	≤ 340 g
material	housing: aluminum

electrical data

voltage supply range +Vs	12 ... 24 V DC (external power supply) 36 ... 57 V DC (Power over Ethernet)
power consumption	approx. 6,4 W @ 24 VDC approx. 7,2 W @ 48 VDC (PoE)

LXG-40M.JP

Gigabit Ethernet, 4 Megapixel, Monochrome

Article number: 11206988

technical data

non-volatile memory

flash memory size 128 kB

environmental conditions

operating temperature +5 ... +60 °C @ T = measurement point

humidity 10 ... 90 % (non-condensing)

environmental conditions

protection class IP 40

conformity

conformity CE
RoHS
EAC

dimension drawing

