

Combination

Encoder with integrated electronic speed switch

Solid shaft with EURO flange B10

1024...10000 pulses per revolution

POG 90 + ESL 90



POG 90 + ESL 90

Features

- Max. 10000 pulses per revolution
- Electronic speed monitoring
- Circuit breaker with up to three selectable threshold speeds
- EURO flange B10 / solid shaft \varnothing 11 mm
- Terminal boxes, turn by 180°

Technical data - electrical ratings

Interference immunity	EN 61000-6-2
Emitted interference	EN 61000-6-3

Technical data - electrical ratings (encoder)

Voltage supply	9...30 VDC; 5 VDC \pm 5 %
Consumption w/o load	\leq 100 mA
Pulses per revolution	1024...10000
Phase shift	90° \pm 8°
Duty cycle	44...56 %
Reference signal	Zero pulse, width 90°
Output frequency	\leq 250 kHz
Output signals	K1, K2, K0 + inverted
Output stages	HTL TTL/RS422
Sensing method	Optical

Technical data - electrical ratings (speed switches)

Switching accuracy	\pm 4 % (\leq 1500 rpm) \pm 2 % ($>$ 1500 rpm)
Switching hysteresis	=30 % of switching speed
Switching outputs	1 output, speed control
Output switching capacity	\leq 6 A / 250 VAC; \leq 1 A / 48 VDC
Minimum switching current	100 mA
Switching delay time	\leq 40 ms

Technical data - mechanical design

Size (flange)	\varnothing 115 mm
Shaft type	\varnothing 11 mm solid shaft
Admitted shaft load	\leq 250 N axial \leq 350 N radial
Flange	EURO flange B10
Protection DIN EN 60529	IP 66
Operating speed	\leq 6000 rpm
Range of switching speed (ns)	650...6000 rpm
Operating torque typ.	3 Ncm
Rotor moment of inertia	320 gcm ²
Materials	Housing: aluminium die-cast Shaft: stainless steel
Operating temperature	-20...+85 °C
Resistance	IEC 60068-2-6 Vibration 5 g, 10-2000 Hz IEC 60068-2-27 Shock 50 g, 11 ms
Corrosion protection	IEC 60068-2-52 Salt mist for ambient conditions C4 according to ISO 12944-2
Connection	2x terminal box
Weight approx.	2.6 kg
Approval	CE

Combination

Encoder with integrated electronic speed switch

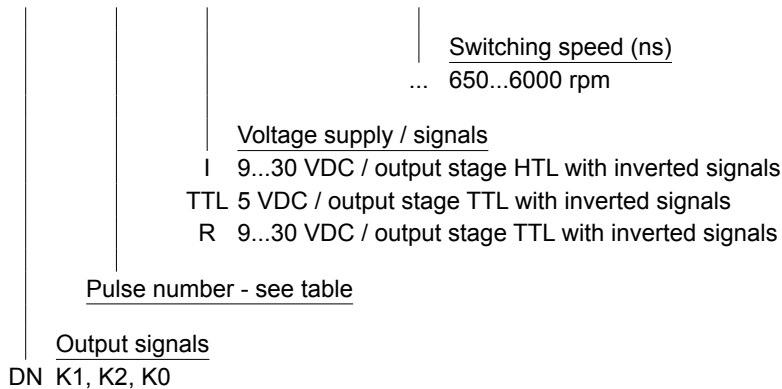
Solid shaft with EURO flange B10

1024...10000 pulses per revolution

POG 90 + ESL 90

Part number

POG90 DN | | | | + ESL90 | ...



Pulse number

1024	2048	3072	4096	10000
2000	2500	3600	5000	

Other pulse numbers on request.

* Please specify the exact switching speed in addition to the part number (factory setting).

Accessories

Connectors and cables

HEK 8 Sensor cable for encoders

Mounting accessories

K 35	Spring washer coupling for solid shaft \varnothing 6...12 mm
K 50	Spring washer coupling for solid shaft \varnothing 11...16 mm
K 60	Spring washer coupling for solid shaft \varnothing 11...22 mm

Diagnostic accessories

11075858 Analyzer for encoders HENQ 1100

Combination

Encoder with integrated electronic speed switch

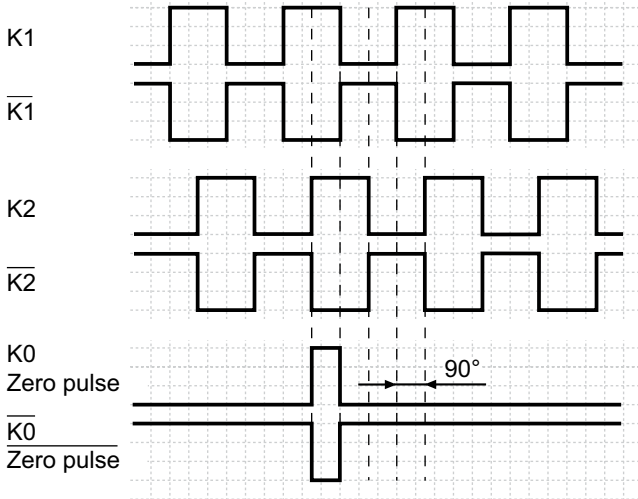
Solid shaft with EURO flange B10

1024...10000 pulses per revolution

POG 90 + ESL 90

Output signals

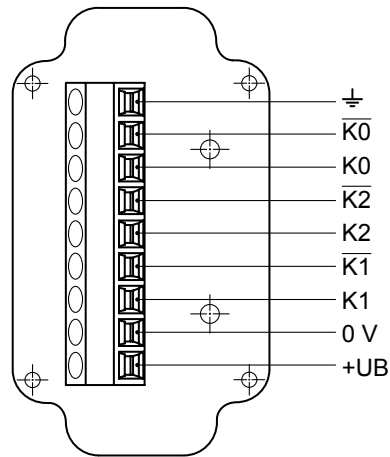
At positive rotating direction



Terminal assignment

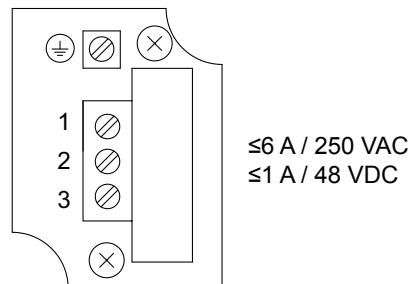
View A

Connecting terminal in terminal box POG 90



View B

Connecting terminal electronic speed switch ESL 90



Combination

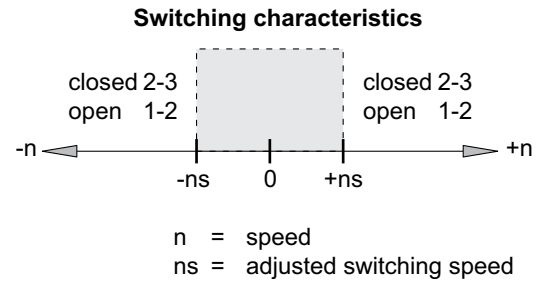
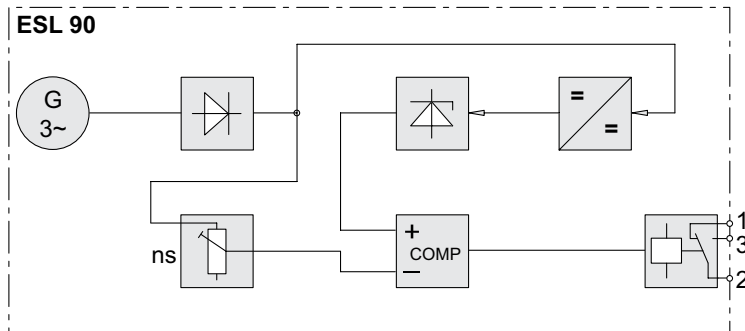
Encoder with integrated electronic speed switch

Solid shaft with EURO flange B10

1024...10000 pulses per revolution

POG 90 + ESL 90

Block circuit diagram



Combination

Encoder with integrated electronic speed switch

Solid shaft with EURO flange B10

1024...10000 pulses per revolution

POG 90 + ESL 90

Dimensions

