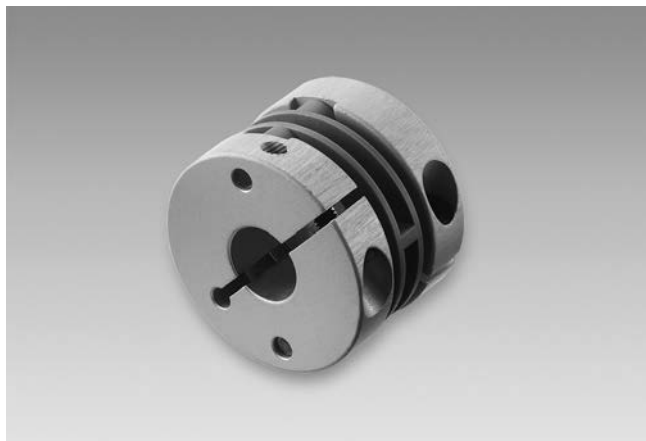


# Accessories

## Mounting accessories

### Spring washer coupling



#### Features

- Operating speed  $\leq 12000$  rpm
- Electric isolated
- Plug-in version

#### Part number

10141131	Spring washer coupling D1=6 / D2=6 (Z 121.C02)
10141132	Spring washer coupling D1=6 / D2=10 (Z 121.C01)
10141133	Spring washer coupling D1=10 / D2=10 (Z 121.C03)
11034138	Spring washer coupling D1=10 / D2=16 (Z 121.C04)
11034139	Spring washer coupling D1=6 / D2=16 (Z 121.C05)
11034140	Spring washer coupling D1=10 / D2=14 (Z 121.C06)
11034141	Spring washer coupling D1=10 / D2=12 (Z 121.C07)
11034142	Spring washer coupling D1=8 / D2=10 (Z 121.C08)

#### Technical data

Operating speed	$\leq 12000$ rpm
Operating temperature	-10...+100 °C
Moment of inertia	29.5 gcm <sup>2</sup>
Torsional rigidity	50 Nm/rad
Torque	<0.6 Ncm
Axial offset	$\pm 0.4$ mm
Radial offset	$\pm 0.3$ mm
Angular error	$\pm 2.5^\circ$
Weight approx.	26 g
Materials	Clamping ring: aluminium Spring washer: plastic

#### Suitable for

EAL580-SC, EAL580-SV, EIL580P-SC, EIL580P-SQ, EIL580P-SY, EIL580-SC, EIL580-SQ, EIL580-SY, ExEIL580P-SC, ExEIL580P-SY, ExEIL580-SC, ExEIL580-SY, G0355, G0356, GA210, GA211, GBA2W, GBAMW, GBM2W, GBMMW, GBP5W, GBU5W, GI355, GI356, GPI0W, GXA1W, GXAMW, GXM7W, GXMMW, GXN1W, GXP1W, GXP5W, GXP8W, GXU5W

#### Dimensions

