

Accessories

Connectors and cables

Connection cable M23 - S2BG12/H2SG12



Features

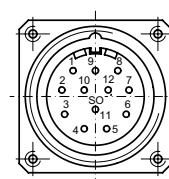
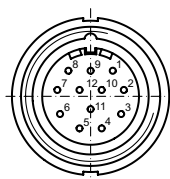
- Shielded connection cable with M23-female connector (12-pin) and rear mount socket (12-pin)

Part number

11078200	Connection cable S2BG12/H2SG12, 2 m
11066188	Connection cable S2BG12/H2SG12, 5 m

Terminal assignment

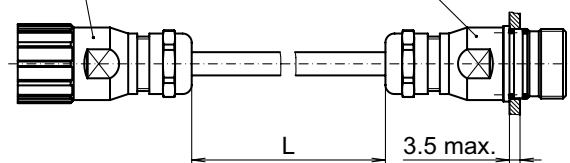
Connector S2BG12	Rear mount socket H2SG12
Pin 5	Pin 5
Pin 6	Pin 6
Pin 8	Pin 8
Pin 1	Pin 1
Pin 3	Pin 3
Pin 4	Pin 4
Pin 12	Pin 12
Pin 10	Pin 10
Pin 2	Pin 2
Pin 11	Pin 11
Pin 7 (NC)	Pin 7 (NC)
Pin 9 (NC)	Pin 9 (NC)
Housing/Shield	Housing/Shield



Dimensions

connector type 2,
bush contacts, straight
12-pin, EMV
S2BG12

rear mount socket type 2,
pin contacts, straight
12-pin, EMV
H2SG12



Z00142