

# S125DML



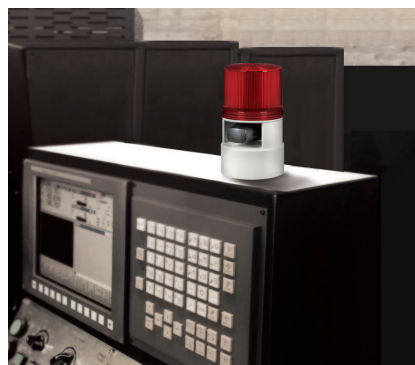
## Versatile Signal/ Warning Lights with Built-in Buzzer

### Multifunctional LED beacon with built-in signal sound



S125DML

- S125DML series comes with prerecorded sounds.
- For WV(5Customized Sounds) type, Input audio message needs to be provide by the customer prior to manufacturing.
- S125DML model wiring can be done with either external contact or external transistors.
- In case of wiring by using transistor, NPN transistor is needed and follow the wiring diagram on the right in order to wire properly.



S125DML is applied to a large press machine control panel.



### Specifications

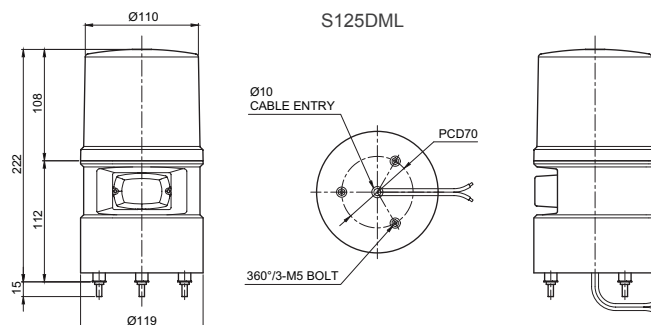
- 125mm outer diameter signal beacon/indicator and electronic horn combined structure to transmit visual and audio signals simultaneously
- Various light sources and tones allow you to select the signal that best suits your working environment
- Models with complex functions of LED steady/flash, strobe and rotation flashing
- Select the desired operation through the switch inside the device
- Easy to maintain and manage by adopting an LED light source that is resistant to shock and vibration and has a long life LED
- Flashing rate: 60-80/min
- Strobe rate: 70-80/min
- Rotation flashing type Rotation speed: 120-140RPM
- Material: Lens-AS, Body-ABS
- Ambient operating temperature : -30°C to +50°C
- Protection class: IP54

Model number	Voltage	Current	Sound Pattern and Volume	Certificates	Weight	Color
S125DML	DC12V -24V	Max. 0.400A	• WS-5 Warning sounds : 105dB • WM-5 Melodies : 105dB • WA-5 Alarms : 103dB • WV-5 Customizable sounds : 95dB	-	0.88kg	• R-Red • A-Amber
	AC110V -220V	Max. 0.140A			0.93kg	• G-Green • B-Blue



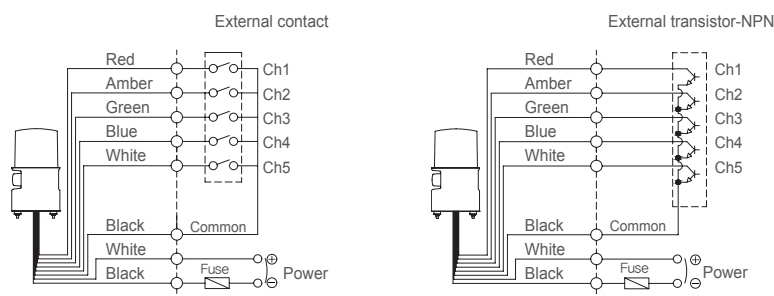
### Technical Diagram

(Units : mm)



### Wiring Instructions

#### S125DML-DC/AC



- External power line standard - UL1015 AWG18(0.75sq)×2C 400mm
- External signal line standard - UL1007 AWG22(03sq) 400mm



### Ordering Specification

S125DML	WA	12/24	A
[Model number]	[Sound]	[Voltage]	[Color]
• S125DML	• WS-Warning • WM-Melody • WA-Alarm • WV-Customizable sound	• 12/24-DC12V-24V • 110/220-AC110V220V	• R-Red • A-Amber • G-Green • B-Blue