

# SEWN series

Electric Horns for Vessels and Heavy Industrial Applications

## Electric horns for vessels and heavy industrial applications featuring excellent sealing, corrosion resistance, and durability

Can select from wall mount type, self stand type, and terminal box type for your various application needs

**SEWN30 - Max 118dB**

**SEWN50 - Max 120dB**

**Aluminum housing**



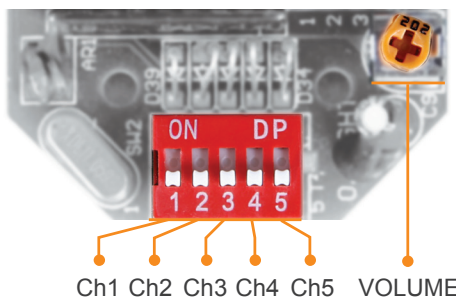
### Common Specifications(SEWN30/ SEWN50)

- Electric horn with tightly sealed structure has excellent durability. Suitable for vessels, steel industry, and outdoor plant applications
- Can select between a variety of mounting options (wall mount type, self stand type, and terminal box type)
- Aluminum housing provides excellent durability
- A variety of sound selection between warning sounds, alarm sounds, melodies and voice messages to fit your sophisticated application needs
- Can adjust sound volume with the dial built inside the unit
- Terminals located inside the terminal box or product
- Cable entry : 1/2"PF
- Materials : Housing-Al, Horn housing-PC/ SUS316L
- Standard Housing color : MUNSSELL No. 7.5BG 7/2
- Ambient operating temperature : -30°C to +50°C
- Protection rating : IP56, Suitable for outdoor installation
- Certificates : KIMM, ABS, CCS, CE Compliant



### Sound Selection and Wiring Instructions

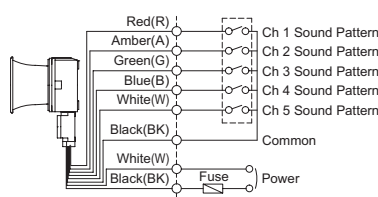
- Standard type : Select sound using the switch inside the unit. When you turn on the dip switch for each channel the sound is turned on.
- Customized type : Select sound using the external contact(LC)  
You can select the audible sound pattern using external contacts or transistor with a customized external sound line(Model number : -LC)
- Product can be wired regardless of polarity



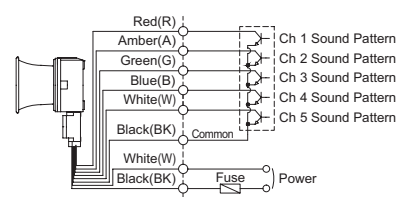
Ch1 Ch2 Ch3 Ch4 Ch5 VOLUME

### SEWN30 SERIES-DC/AC SEWN50 SERIES-DC/AC

#### EXTERNAL CONTACT



#### EXTERNAL TRANSISTOR-NPN



# SEWN50 series

Electric Horns for Vessels  
and Heavy Industries Applications



## SEWN50 series Max 120dB

Model number	Sound pattern	Volume	Voltage / Current	Certificates	Weight
SEWN50E -Wall mount	WS 5 Warning sounds	120dB	DC12V / 2.440A DC24V / 1.186A AC110V / 0.244A AC220V / 0.122A	   DC24V only	SEWN50E DC-4.22kg AC-4.52kg
	WP 5 Special warning sounds	120dB			
SEWN50L -Self stand	WM 5 Melodies	120dB			SEWN50L AC-4.20kg AC-4.50kg
SEWN50T -Wall mount with terminal box	WA 5 Alarms	118dB			SEWN50T DC-4.65kg AC-4.95kg
	WV 5 Customizable sounds	115dB			

※ Please refer to Page 102 for detailed information about selectable sound patterns.



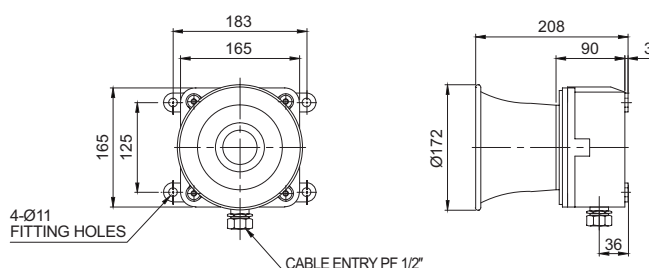
### Technical Diagram

(Units : mm)

SEWN50E



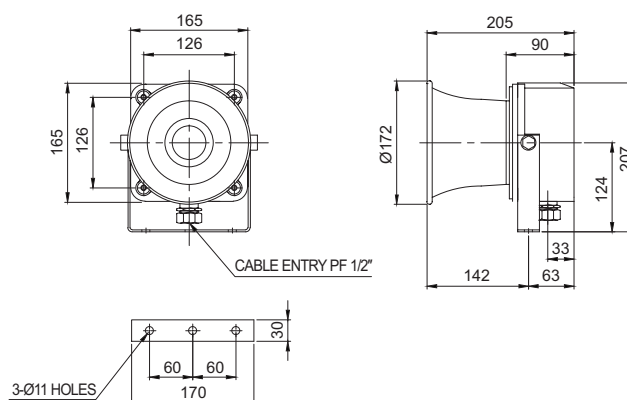
SEWN50E



SEWN50L



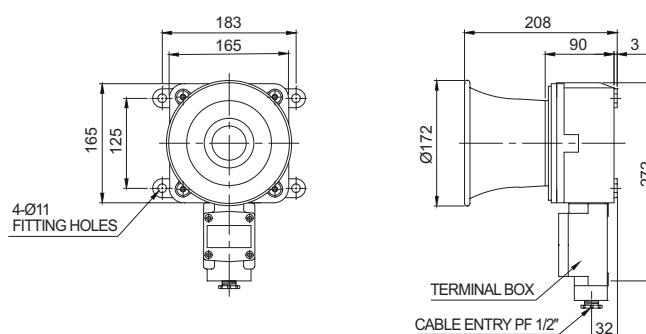
SEWN50L



SEWN50T



SEWN50T



- SEWN50E/ SEWN50L model uses flexible connector at cable entry and SEWN50T model uses 15C nipple at cable entry.
- Cable gland is customizable



Flexible connector



15C nipple

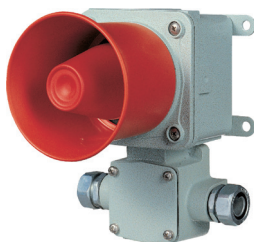
# SEWN series

## Electric Horns for Vessels and Heavy Industries Applications

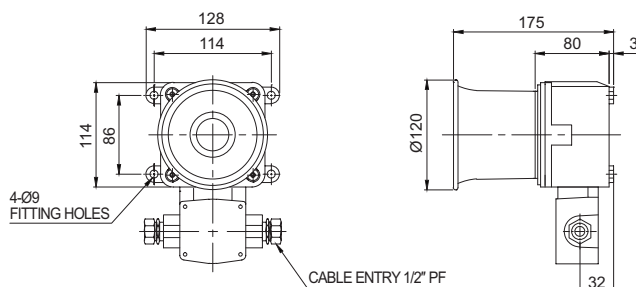


### 2 Cable Entry Terminal Box Type Technical Diagram

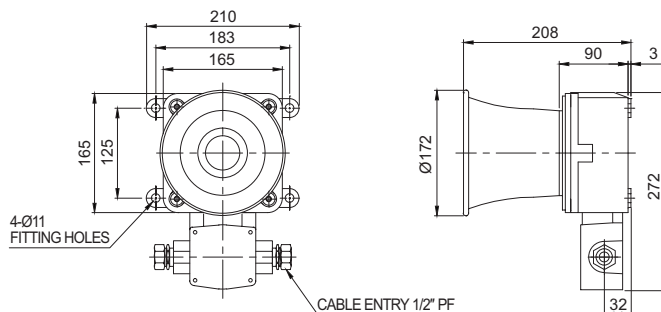
(Units : mm)



SEWN30-2T



SEWN50-2T



### Customization

- Cable gland available
  - 3/4"PF cable entry (Standard : 1/2"PF)
  - 2 cable entries terminal box :  
Customized terminal box available with two cable entries in opposite directions (Model number : SEWN30-2T, SEWN50-2T)
  - Brass housing product :  
Brass housing products provide improved corrosion resistance.
- ※ Color will be MUNSELL No. 7.5BG 7/2 when released.
- External threading of sound line (Model number : -LC)



Brass housing product



### Ordering Specification

SEWN30T	WS	220	LC
[Model number]	[Sound]	[Voltage]	[Sound selection]
<ul style="list-style-type: none"> <li>• SEWN30E</li> <li>• SEWN30L</li> <li>• SEWN30T</li> <li>• SEWN50E</li> <li>• SEWN50L</li> <li>• SEWN50T</li> </ul>	<ul style="list-style-type: none"> <li>• WS-Warning</li> <li>• WP-Special warning sounds</li> <li>• WM-Melody</li> <li>• WA-Alarm</li> <li>• WV-Customizable sound</li> </ul>	<ul style="list-style-type: none"> <li>• 12-DC12V</li> <li>• 24-DC24V</li> <li>• 110-AC110V</li> <li>• 220-AC220V</li> </ul>	<ul style="list-style-type: none"> <li>• Standard</li> <li>• Built-in switch</li> <li>• LC</li> <li>• External contact</li> </ul>