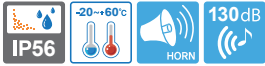


# SANA series



**SANA200-200-300HZ**  
**SANA400-400-600HZ**  
**SANA700-700-800HZ**



## SANA200

## Air Horns for Vessels and Heavy Industrial Applications



### Common Specifications(SANA200/ SANA400/ SANA700)

- High volume horn uses compressed air to power the high pitched sound made with the diaphragm
- Uses a special material which consumes a small quantity of compressed air and has long durability
- Suitable for applications like a large and noisy engine rooms, a phone alarm in a pump room, or as an emergency alarm
- Sound volume : Max 130dB at 1m
- Housing standard color : ● R-Red, ● B-Black, ● 7.5BG-MUNSELL No.7.5BG 7/2
- Materials : Horn-PC, Solenoid valve box-ABS
- Air pressure : 5-7kg/cm<sup>2</sup>
- Ambient operation temperature : -20°C to +60°C
- Protection rating : IP 56
- Certificates : KIMM Compliant

Model number	Frequency	Volume	Certificates	Weight	Voltage	Current	Color
SANA200	200-300Hz	Max 130dB		1.19kg	DC24V	0.448A	<span style="color: red;">●</span> R-Red
SANA400	400-600Hz			1.13kg	AC110V	0.111A	<span style="color: black;">●</span> BK-Black
SANA700	700-800Hz			1.07kg	AC220V	0.055A	<span style="color: teal;">●</span> 7.5BG

Warning/  
Signal/  
StackableSignal &  
Electric Horn/  
Speakers

### Vessels and Heavy-Duty Equipment

Explosion  
ProofWarning  
Light BarAviation  
Obstruction  
LightsSignal Tower  
LightsSignal Tower  
Lights

Electric Horn/  
Speakers



## Industrial LED Lights



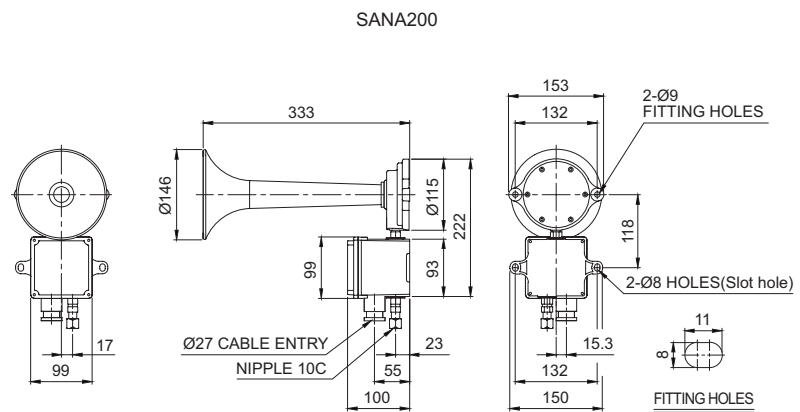
## SANA400

# SANA200 200-300Hz



## Technical Diagram

(Units : mm)



# SANA400 400-600Hz



## Technical Diagram

(Units : mm)

