

ELM-SOL

Solar Powered Warning Light Bar



**Solar powered
warning light bar for
road safety**

- Semi-permanent lifetime by adopting high brightness LED
- Solar powered design does not require a power system (Built-in rechargeable battery)
- Built-in SUN switch activates a system that automatically operates the product when darkness is detected
- Operates for 96 hours upon full charge
- Flashing rate : 60-80 flashes/min



Specifications

Model number	Battery voltage	Battery capacity	Running time	Certificate	Weight
ELM-SOL	12V	12Ah	96 hour	-	12.80kg

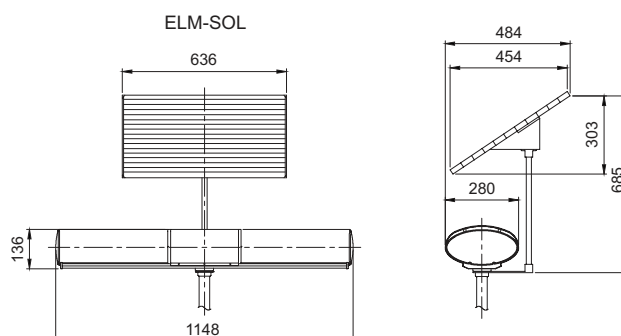


Technical Diagram

(Units : mm)



ELM-SOL



SAMP

Controllable AMP for Warning Light Bar

**Signal sound AMP for
ELV and ELM**

- Simple linkage between sound signal and warning lights
- Clear and stable sound signal
- Built-in switch for emergency voice on the microphone
- Commonly applicable for ELV and ELM



Specifications

Model number	Voltage	Current	Sound pattern	Frequency/ Repeat time	Certificate	Weight
SAMP	DC12V DC24V	4.150A 1.870A	Fire	300-700Hz / 140cycle	-	1.09kg
			Emergency	350-750Hz / 14cycle		
			Ambulance	610-690Hz / 50cycle		
			Buzzer	2,200Hz		
			Horn sound	595Hz - 1,040Hz		



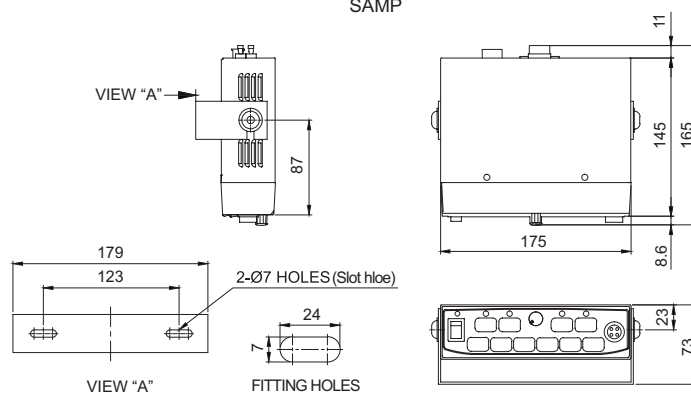
Technical Diagram

(Units : mm)



SAMP

SAMP



Ordering Specification

SAMP	-	12
[Model number]		[Voltage]
• SAMP		• 12-DC12V • 24-DC24V