

# Wall Mount Electric Horn with Pre-Recorded Special Warning Sound(Telephone Initiated)

## QWHT-TI Series

Wall mount electric horn that offers 31 pre-recorded warning sounds and 30 user selected sound messages



• Binary input offers 31 sound

### PRODUCT SPECIFICATION

QWH35T-TI | QWH50T-TI

**Materials** Horn-PC, Housing-PC+ABS

**Ambient operating temperature**

-50°C to +60°C

**Cable entry** PG 13.5

**Protection rating** IP66

**Compliant with RoHS directive**

- Signal fit for the specific environment and condition.
- Telephone Initiated Signal beacon triggers built-in alarm sound that is activated by 25Hz Telephone Ring Signal
- Highly noticeable Telephone alarm in noisy environment
- Telephone line(2 LINE) is connected to PSTN telephone line
- Easy device customization with built in sound selection function, volume adjustment function and an SD Card slot for user inputted tones.
- 31 available tones that can be selected for a variety of environments
- 31 pre-recorded tones available via binary input
- Suitable for use in environments that require a tight seal and superior dust protection rated IP66
- Easy wiring through external terminal box
- Rated power when telephone lines are not in use: 45VDC - 55VDC
- Rated power when telephone rings : 95VDC - 130VDC

### Sound Selection and Volume Adjustment Instructions

QWH series has control switches inside the unit for sound selection and volume adjustment.

You can play customized sound message(MP3) with SD Card.

#### QWHT-TI Series Product Category

QWH35T-TI Standard pre-recorded sound type

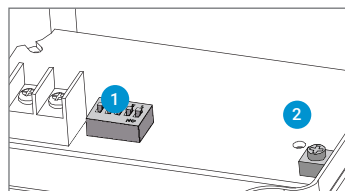
QWH50T-TI Standard pre-recorded sound type, high volume output

### The input method of built-in sound type

	1	2	3	4	5
ON	<input type="checkbox"/>	<input type="checkbox"/>	<input type="checkbox"/>	<input type="checkbox"/>	<input type="checkbox"/>
OFF	<input type="checkbox"/>	<input type="checkbox"/>	<input type="checkbox"/>	<input type="checkbox"/>	<input type="checkbox"/>
No.	1	2	3	4	5
0	0	0	0	0	0
1	0	0	0	0	1
2	0	0	0	1	0
:	:	:	:	:	:
31	1	1	1	1	1

Select from 31 pre-recorded output sound options by using a combination of the 5 channel input switches. Selecting one sound by combining 5 switches is Binary Input Method The binary input method allows you to express each of the 31 alarm sound signals with a "0" or "1" by switching the 5 channels on and off as shown in the table.

### Built-in sound type



1 Sound channel selection switch

2 Volume dial

### QWH35T-TI Wall Mount Electric Horn with Pre-Recorded Special Warning Sound

Model number	Voltage	Current	Sound Pattern and volume	Certificates	Weight
QWH35T-TI	DC12V-24V	Max. 0.970A	·Binary Input: 31Ch ·MP3 Messages: Max.115dB	-	1.10kg
Terminal box equipped type					
Built-in sound type	AC110V-220V	Max. 0.320A			

### QWH50T-TI Wall Mount Electric Horn with Pre-Recorded Special Warning Sound

Model number	Voltage	Current	Sound Pattern and volume	Certificates	Weight
QWH50T-TI	DC12V-24V	Max. 3.520A	·Binary Input: 31Ch ·MP3 Messages: Max.123dB	-	3.00kg
Terminal box equipped type					
Built-in sound type	AC110V-220V	Max. 0.480A			

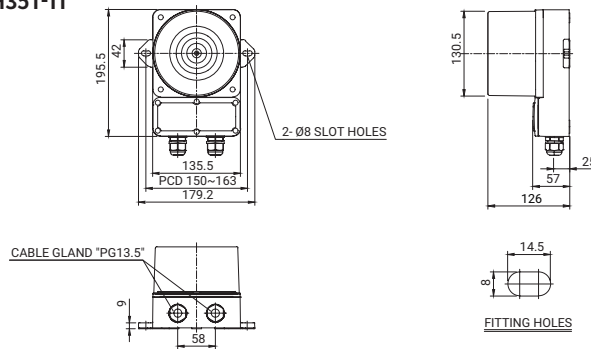
※ DC type model has a free-voltage range of 10V-30V.

※ AC type model has a free-voltage range of 100V-240V.

## Technical Diagram

Units: mm

### ·QWH35T-TI

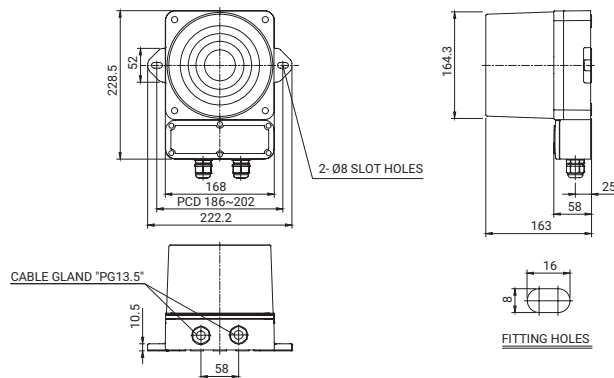


Easy wiring with 2 cable entries terminal box type



**QWH35T-TI**  
(115dB)

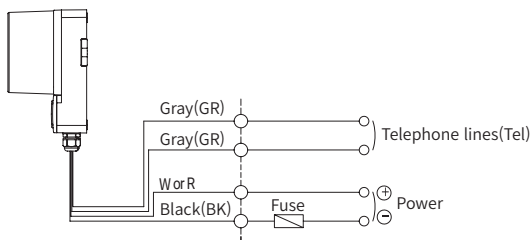
### ·QWH50T-TI



**QWH50T-TI**  
(123dB)

## Sound Selection Instructions and Wiring

### ·QWH35T-TI / QWH50T-TI - DC/AC



- Please wire the unit in accordance with a wiring diagram below as power line and telephone line are wired externally.
- External power line - UL1015 AWG18(0.75sq) x 2C 400mm
- External telephone lines - UL1007 AWG22(0.3sq) 400mm
- Binary input 31 sound tones output
- ※ Please refer to [Sound pattern and combination for multifunctional product] for channel selection switch setting(Wiring instruction is replaced to channel selection switch).

## Ordering Specification

<b>QWH35T</b>	-	<b>110/220</b>	-	<b>TI</b>
[Model number]		[Voltage]		[Telephone Initiated]
QWH35T		12/24-DC12V-24V		TI-Telephone Initiated
QWH50T		110/220-AC110V-220V		