



PRODUCT SPECIFICATION

SPNA-TI

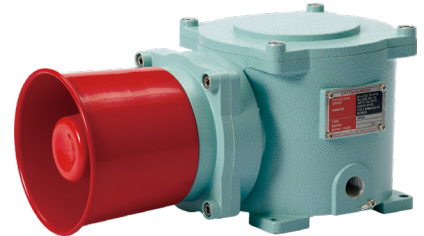
Materials Housing-Al, Horn housing-ST316L**Ambient operating temperature**

-40°C ≤ Tamb ≤ +60°C

Sound volume Max 118dB at 1m(Volume adjustable)**Explosion protection rating**

IECEX - Ex d II C T6 Gb, IP66

ATEX - EX II 2G Ex d II C T6 Gb, IP66

Certificates IECEX, ATEX**Housing standard color** MUNSELL No. 7.5BG 7/2**Cable Entry** 1/2" NPT

SPNA-TI

- Explosion proof electric horn
- Telephone Initiated Signal beacon triggers built-in alarm sound that is activated by 25Hz Telephone Ring Signal
- Highly noticeable Telephone alarm in noisy environment
- Telephone line(2 LINE) is connected to PSTN telephone line
- Various sound tones can be selected : warning sound, alarm, melody
- Aluminum housing provides excellent durability
- Rated power when telephone lines are not in use: 45VDC - 55VDC
- Rated power when telephone rings : 95VDC - 130VDC

SPNA-TI Explosion Proof Electric Horn, Max. 118dB

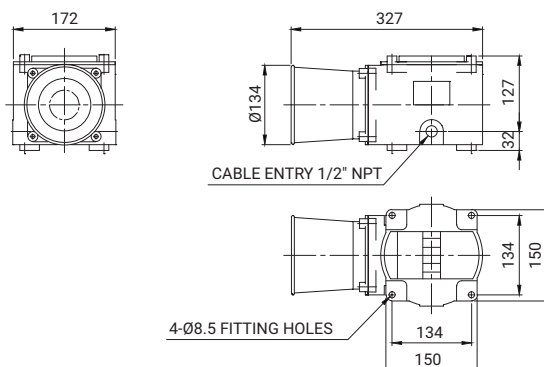
Model number	Voltage	Current	Sound Pattern and Volume	Certificates	Weight
SPNA-TI	DC12V	2.030A	·WS-5 Warning sounds: 118dB	IECEX	6.09kg
	DC24V	0.950A	·WP-5 Special warning sounds: 118dB		6.09kg
	AC110V	0.220A	·WM-5 Melodies: 118dB	ATEX	6.44kg
	AC230V	0.130A	·WA-5 Alarms: 116dB		6.44kg
			·WV-5 Customizable voices: 113dB		

※ Please refer to [Sound tone and combination for standard product] on this catalogue for detailed sound tone specification

Technical Diagram

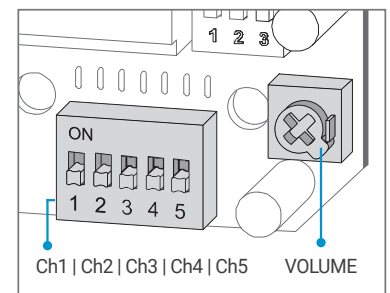
Units: mm

·SPNA-TI



Sound Selection Instructions and Wiring

- Standard Type: Select sound using the switch inside the unit. When you turn on the dip switch for each channel, the designated sound will be played.



- Customization : External contact(LC)
In case of select sound between external contact and transistors, sound line is threading as customization when product released(LC).

Ordering Specification

SPNA	-	WM	-	230	-	LC	-	TI
[Model number] SPNA		[Sound] WS-Warning sounds WP-Special warning sounds WM-Melodies WA-Alarms WV-Customizable voices		[Voltage] 12-DC12V 24-DC24V 110-AC110V 230-AC220V		[sound selection] (Blank)-Standard type LC Type-Uses external contact		[Telephone Initiated] TI-Telephone Initiated

Customization

- Explosion proof cable gland attached type available (Standard type does not come with explosion proof cable gland)
- 2 ways cable entry
- Customized cable entry (3/4" NPT, M20×1.5, M25×1.5) available