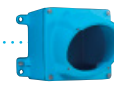




### WALL MOUNTING SOCKET DN6



Wall box metal 30°  
595C3M50



Socket-outlet  
1964017



### PLUG DN6



Straight elastomer  
555POD35



Inlet  
1968017

## MAIN FEATURES

Rated current (with wiring according to standard)	90 A	Ambient temperature	-40 °C to +60 °C
Maximum voltage	500 V	Flexible wiring (min-max)	10-25 mm <sup>2</sup>
IP protection lid closed	IP55	Stranded wiring (min-max)	10-35 mm <sup>2</sup>
IP protection plug connected	IP54	Other wiring	on request
Shock resistance (metal casing)	IK09	Keying positions	16

### Load-break capability of the DECONTACTOR™

Comply with IEC/EN 60309-1 and IEC/EN 60309-4 standards

90 A/500 V

Load-break capability according to IEC/EN 60947-3/AC-22 A

(90 A/400 V) or (63 A/500 V)

### SOCKET-OUTLET female DN6 (90 A)



### INLET male DN6 (90 A)



Dual-voltage socket-outlet (see p. 7)

20-24 V AC	2P	196408A	196808A
220-250 V AC	1P+N+E	1964015	1968015
380-440 V AC	3P+E	1964013	1968013
220-250 V AC / 380-440 V AC	3P+N+E	1964017	1968017
480-500 V AC	3P+E	1964093	1968093
480-500 V AC	3P+N+E	1964097	1968097
Auxiliaries 10 A/400 V AC	+ 4 contacts	Ref. + 264	Ref. + 264

► Other voltages, frequencies and contact configurations are available (see page 10).

## INFO+

### OPTIONS AND ACCESSORIES

Find the boxes, sleeves and handles at the end of the section page 64.

