



Innovation in Alarm & Signal

Wireless Network System



Company Introduction



Qlight Gives You a Brighter Future!

As equipment and industrial processes become more automated and diversified, the demand for a diverse portfolio of products and focused expertise in the field of signaling devices has grown dramatically. Since its founding in 1986, Qlight has developed into a dominant force in the industry and is recognized as the leading specialist in signaling devices. We have built a flexible production system capable of building a variety of products to fit the expansive application needs of our growing customer base. With the introduction of LED light sources in our products in 1993, more than 450 of our products have been used in various industries and applications such as semi-conductors, automotive, unmanned automation equipment, iron/steel, shipbuilding, marine plants, and petrochemical plants. In recent years, we have innovated further by developing products such as our specially controlled (USB, Ethernet, wireless) multifunctional tower lights and multichannel electric signal horns with MP3 input which provide our customers with smart solutions to complex signal transmission systems. In addition, through our rigorous attention to detail and implementation of robust inspection systems we pride ourselves in provid-

ing products with superior technology and quality. We currently have certification in 22 organizations such as IECEx, ATEX, NEPSI, CCS, CE, UL and continue to expand our certifications in accordance to industry needs.

Qlight is differentiated by focusing on a diverse product portfolio and quick delivery times. We employ an enterprise resource planning (ERP) system, a high-efficiency supply chain management (SCM) system, a cell based production system, and a flexible customer-centric production management system to meet the needs of our customers. Our established local corporations in China and South Korea, sales branches in Japan and the United States, and a global service network provides a distribution and sales system servicing over 40 countries. Through the organic collaboration between our production and distribution centers, we offer services that are appropriate to the situation of each country, industrial environment, and market. Qlight strives to continue our efforts as an industry leading company by developing new technologies that can contribute to improving industrial efficiency through improved customer relationships.



Qlight Global Networks

Country	Company name	Address	Phone
Korea	Qlight Co., Ltd.	185-25, Mukbang-Ro, Sangdong-Myeon, Gimhae-si, Gyeongsangnamdo, Korea	+82-55-328-4082
USA	Qlight USA, Inc.	#341, 3003 North First St., San Jose, CA 95134 USA	+1-408-519-5740
China	SHANGHAI Qlight Electronics Co., Ltd.	#19, Nanda Road, Baoshan Area, Shanghai, China	+86-21-6651-7100

Qlight Clients Heavy industry / Ship building / Automotive / Steel / Machinery / Petrochemical / Power plants / Electronics / Semiconductor / Emergency Vehicles

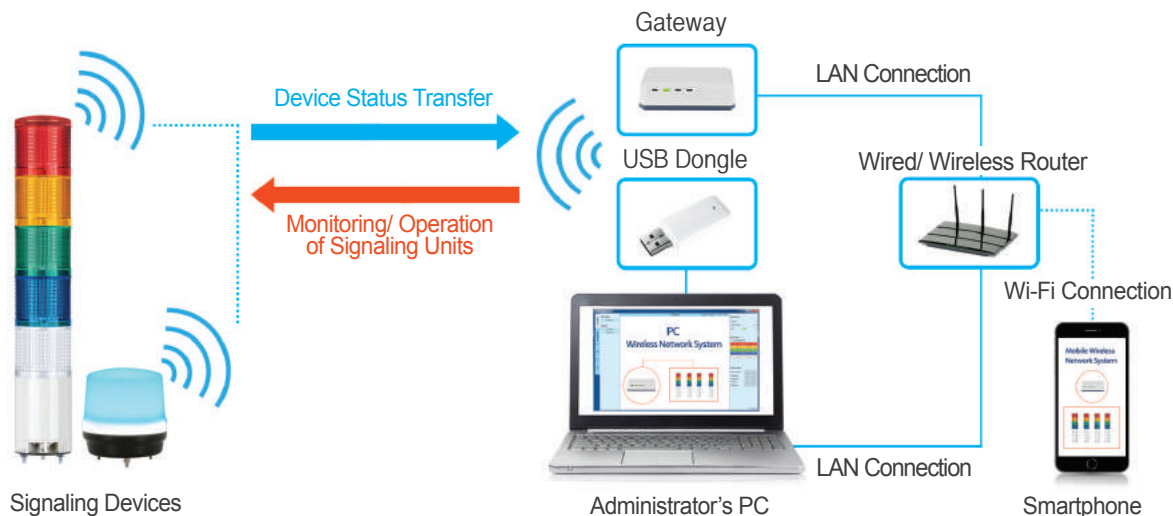
Company History

Qlight has been striving to accomplish our mission to provide visual and audible status indicating systems and solutions to enhance our customer's work safety and efficiency for the last three decades.

1986~1992	1993~2005	2006~2010	2011 to Present	~ Future
Business foundation and consolidation	Growing as a signal transmission device specialist	A great leap forward & business reconstruction	New engines for growth	The 2nd growth and globalization
				
			<p>2017 03 Launched Wireless Network System(QTG60L-WIZ, QTG60ML-WIZ, QTG70L-WIZ, QTG70ML-WIZ, QMCL100-WIZ, QMCL125-WIZ)</p> <p>02 Aviation Obstruction Light(SAOL1) acquired certificate from ICAO(International Civil Aviation Organization)</p> <p>2016 11 Multifunctional modular signal tower lights patented (Patent # : 10-1676863)</p> <p>09 QMFL300-Ex LED Work Light Acquired KGC Safety Certificate</p> <p>07 Acquired ICAO (International Civil Aviation Organization) certificate for low intensity LED aviation obstruction lights (SAOL2)</p> <p>02 Qlight's New Innovative UL-Listed QMPS Series Smart Electric Horn Now available</p> <p>Obtained UL certificate for LED signal lights Q series</p> <p>Obtained the patent for "Bar style LED work lights" (Patent # : 10-1598123)</p> <p>2015 12 The second headquarter factory built</p> <p>06 Limit switch models (3 items including SW2TS) acquired certificates from RMRS</p> <p>03 LED Work lights (QML150/250, QMFL 500/600) UL listed</p> <p>2014 10 Established the Qlight USA, Inc. in San Jose, CA.</p> <p>09 Horn which that emits light patented (Patent # : 10-1452447)</p> <p>08 LED strobe light with multi-lens patented (Patent # : 10-1444391)</p> <p>Explosion Proof product family including SNE, SNES, SESA, SEA, SPNA acquired IECEx certificates</p> <p>01 Non-Sparking Explosion Proof tower lights including ST45ML and STB45ML acquired KGS and NEPSI certificates</p> <p>2013 01 Portable warning lights for agricultural machine applications patented (Patent # : 10-1226959)</p> <p>2012 12 Explosion Proof warning lights (SNE, SNES) acquired CCS Certificates</p> <p>09 LED work light with cylindrical lens attached patented (Patent # : 10-1219020)</p> <p>Explosion Proof warning lights (SESA, SEA, SPNA) and heavy duty warning lights (SH1, SED, SEWN30) certified by CCS</p> <p>01 LED warning light with LED reflector patented (Patent # : 10-1108102)</p> <p>2011 11 SNE, SNES certified by NEPSI, SNE, SNES, SESA, SEA, SPNA certified by KOSHA</p> <p>08 KCC (Korea Communications Commission) certificate acquired</p> <p>07 Light equipment applying prism system patented (Patent # : 10-1051056)</p> <p>ATEX certificate acquired for PC controlled tower light (ST56EL-ETN)</p> <p>2010 05 QEB certified by KIMM</p> <p>LED warning light, bulb revolving warning light patented (Patent # : 10-0961472)</p> <p>2009 12 SSEL certified by KIMM</p> <p>LED tower lights compliant with the RoHS Directive</p> <p>2008 04 Motor drive system patented (Patent # : 20-0439536)</p> <p>03 LED revolving type lens patent acquired (patent # :10-0808669)</p> <p>2007 11 Explosion Proof electric horn (SPNA) acquired NEPSI certificates</p> <p>05 Tower light models including ST45, ST56,ST80) UL listed</p> <p>2005 07 Heavy duty products for vessel applications acquired Lloyd's (UK's Maritime Classification Society) certificates</p> <p>04 ABS certificates acquired for 18 products including SH1</p> <p>2004 06 ISO 9001:2000 certificates acquired</p> <p>2001 02 Established Shanghai Qlight Electronic Co.,Ltd. in China</p> <p>2000 07 Established Qlight Limited</p> <p>1993 11 Nominated for developing domestic Explosion Proof warning lights by Korean Ministry of Science & Technology</p> <p>1988 03 Developed limit switches for vessel applications</p> <p>1986 07 Established Qlight</p>	

Wireless Network System Features

Wireless network system uses wireless network to remotely monitor and control the operation status of a signaling device through a PC or smartphone. By applying wireless communication between production equipment, users can build an advanced production system.



- Uses a Mesh Topology that operates in 2.4 GHz short-range wireless technology which ensures the communication reliability in harsh environments
- Multi-hop function of the signaling device enables stable long-distance communication (with up to 100M between devices)
- Conform to International Standard IEEE802.15.4g

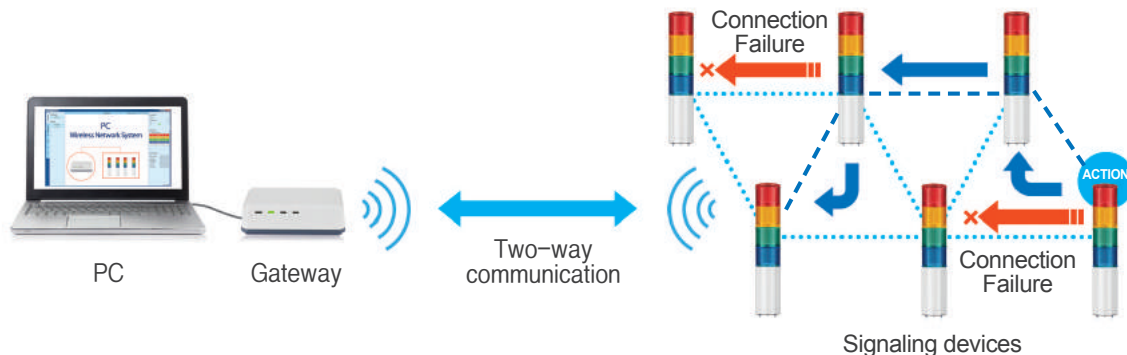
• What is ZigBee?

ZigBee is a representative technology for low-power, low-cost wireless sensor network and has standardized the top layer Protocol and Application based on the IEEE 802.15.4 working group and PHY / MAC layer in 2003. IEEE802.15.1(Bluetooth), IEEE802.15.3(UWB), IEEE802.15.4(ZigBee) are the most common standards for Wireless Personal Area Network(WPAN). ZigBee uses three types of frequency bands: 2.4GHz, 868MHz, and 915MHz, with transmission rates of 250kbps, 20kbps, and 40kbps. Qlight network products uses 2.4GHz frequency band which has the fastest transmission speed.

Wireless Network System Application

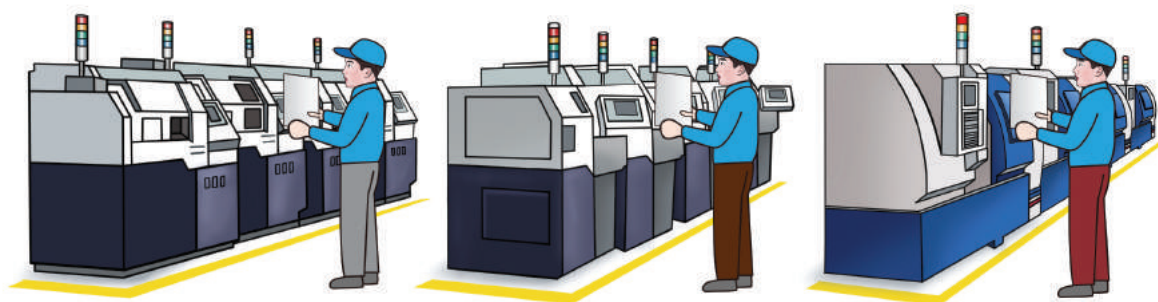
◆ Routing function that automatically navigates the optimum communication path

- Mesh network selects the strongest signal path for traffic and automatically steers signals around interference to ensure high availability of mesh links.



◆ Building an advanced production network system with a low cost

- Combining a new network system to existing production lines can be easily done by connecting wireless signal devices.
- Cost-effective by requiring no additional cable when change the layout of production lines .



Wireless Network System Concept

Components

Application	Gateway	USB Dongle	Signaling Devices

1. Connection Types

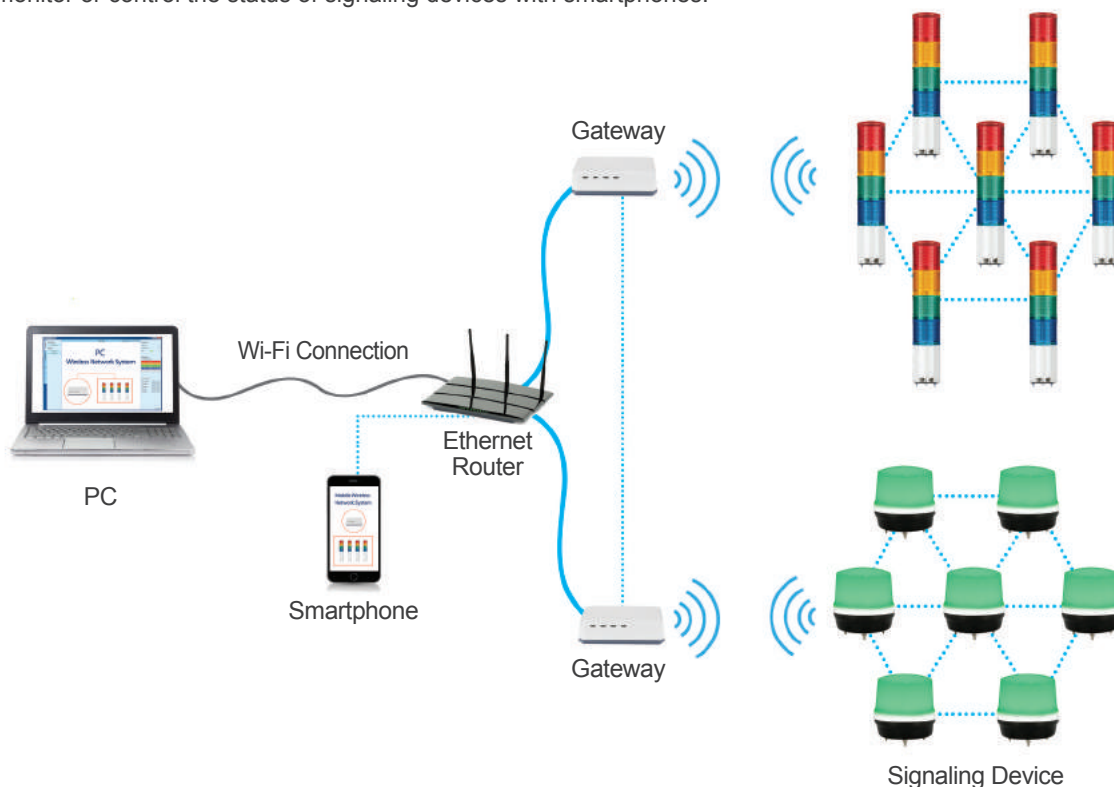
1) Connection via USB Dongle

- Easy installation and operation by plugging it to a PC, controls and monitors up to 32 wireless devices.
- Suitable for a single or small-scaled wireless network connection needs.



2) Connection via Gateway

- Connecting multiple gateways allows 768 wireless signaling devices to be connected to the network, suitable for large-scaled production facilities.
- Can monitor or control the status of signaling devices with smartphones.



Wireless Network System Instructions

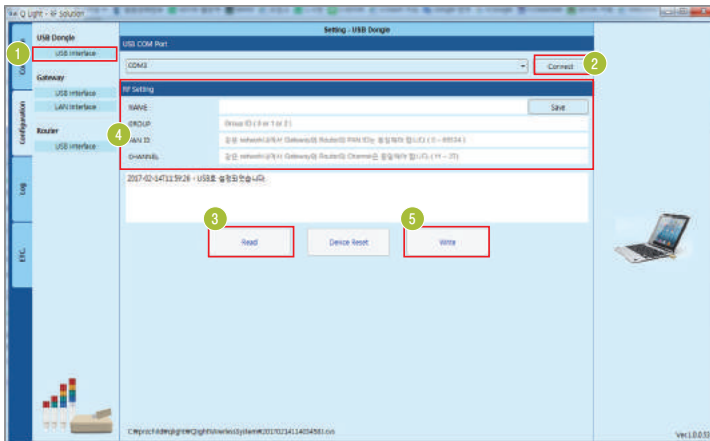
2. Connection Instructions

1) USB Dongle

- PC program allows you to configure wireless devices such as gateways, USB dongles and signaling devices, and can also monitor or control the status of the signaling devices.
- Check the COM port after the USB Dongle is connected(RS-232).
- Click Start -> Control Panel -> Device Manager -> Port (COM & LPT)

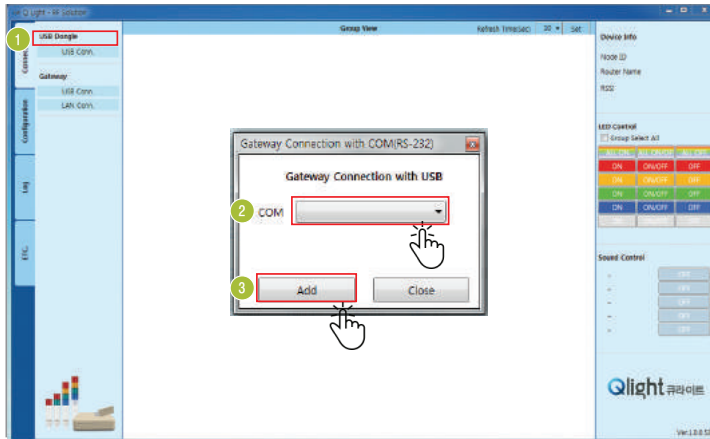


· USB Dongle Setting



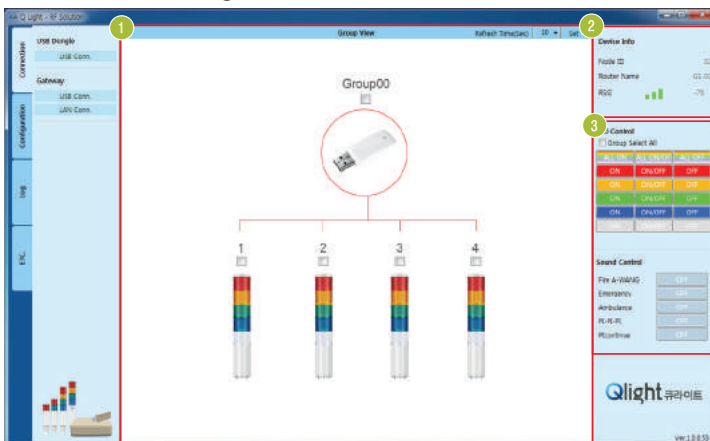
- 1 Config>USB DONGLE>Select “USB Interface”
- 2 Check the COM port of your PC and press “Connect” button to connect to the USB Dongle
- 3 Select “Read” to read RF information of the currently set USB dongle
- 4 Check and modify RF information of the USB dongle (RF info includes “NAME”, “PANID”, “CHANNEL”, “GROUP”, etc.)
- 5 Press “Write” button to save the modified information.

· USB Dongle Connection



- 1 Connection>USB DONGLE>Press “USB Interface” Button
- 2 Select COM port in the pull down window
- 3 Press “ADD” button to connect USB dongle

· Device Monitoring & Control



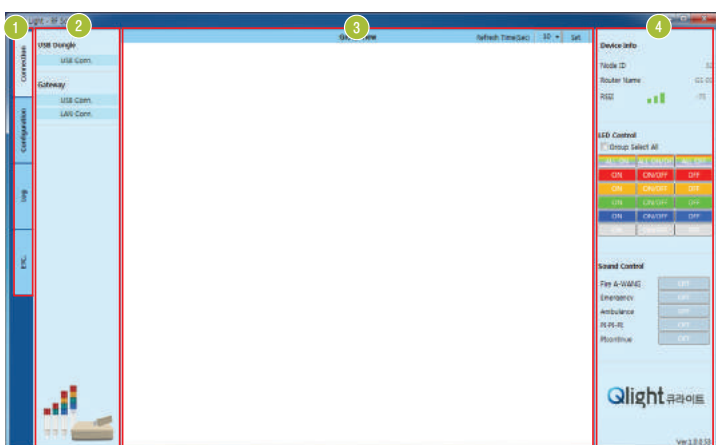
- 1 Identify devices that are connected wirelessly via USB dongle
 - Select a connected device (can select individually or in group)
- 2 Check the information of selected device (ID, Name, Signal strength)
- 3 Can control operation of selected devices individually or in group

Wireless Network System Instructions

2) Gateway

- The PC program allows you to configure wireless devices such as gateways, USB dongles and signaling devices, and can also monitor or control the status of the signaling devices.
- **Setting and Usage**
 - The PC program allows you to configure wireless devices such as gateways, USB dongles and signaling devices, and can also monitor or control the status of the signaling devices.
 - With the Gateway linked to the Ethernet Network users can check or control the operation status of devices by smartphone. The control PC uses IIS function to enable access to the smartphone in WINDOW XP or later versions.

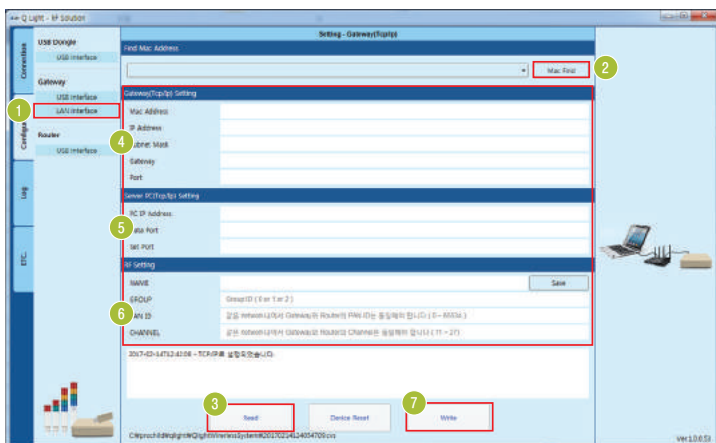
■ What is IIS? IIS stands for Microsoft's Internet information Services which is a WINDOWS service used for web service. With IIS, services such as FTP, SMTP, NNTP, and HTTP / HTTPS are available.



- 1 Tab
 - Connection : USB dongle, gateway connection setup
 - Configuration : USB dongle, gateway, router setup
 - Log : Stores log data and displays status of router through data viewer
 - Manual : User's guide for sample PC tool
- 2 Menu
 - Provides detailed menu selections for each tab
- 3 Wireless network viewer
 - Displays network status of the wireless devices
- 4 Status
 - Displays the operation status and enables control of the wireless devices

* Please refer to the separate manual for detailed settings and instruction

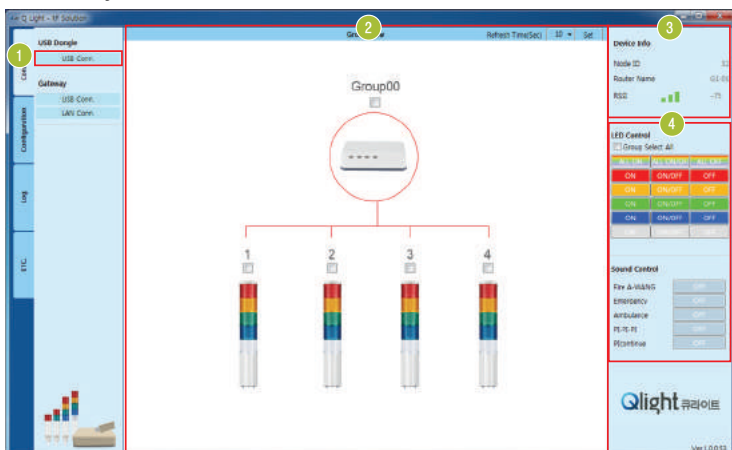
GATEWAY SETTING



- 1 Config>Gateway>Select "Lan Interface"
- 2 Click "Mac Find" to search the mac address of gateway
- 3 Press "Read" to check the current setting using the mac address of the gateway
- 4 Check and modify the network information of the gateway
- 5 Check and modify the network information of the PC server
- 6 Check and modify RF information of gateway
- 7 Save the modified settings

Wireless Network System Instructions

•Gateway Connection



- 1 Connection>Gateway>Select "Lan Interface"
- 2 Select wireless device
 - Can select individually or in groups
 - Can check the operation status of the currently operating wireless devices
- 3 Can check the wireless setting of the selected devices
- 4 Can control selected individual device or group of devices

* The method of USB connection using the Gateway is same with the method of USB connection using USB DONGLE

3) Smartphone

- In order to use smartphone the gateway and wired/wireless router should be connected.
- Access to the web page from smartphone using the IP address of the administrator's PC with IIS set up.
- Log into your account in the login page and select the connected Gateway.
- Monitor or control the selected device by selecting the signaling device connected to the selected gateway.



Connect to web page



Connect to web page



Select connected wireless device



Monitor or control the status of selected device

Specification List For Wireless Products

Wireless LED Tower Lights



Model number(series)	QTG60ML-WIZ	QTG60L-WIZ	QTG70ML-WIZ	QTG70L-WIZ
Voltage	AC/DC12V, AC/DC24V AC110V~220V	AC/DC12V, AC/DC24V AC110V~220V	AC/DC12V, AC/DC24V AC110V~220V	AC/DC12V, AC/DC24V AC110V~220V
Dimension (mm)	Diameter	Ø60	Ø60	Ø70
	Height	199-399	435-625	199-399
	Depth			357-557
Materials	Lens-PC Housing-ABS	Lens-PC Housing-ABS	Lens-PC Housing-ABS	Lens-PC Housing-ABS
	Layers	1-5 Layers	1-5 Layers	1-5 Layers
Light source & Operation	Bulb Steady/Flashing			
	LED Steady			
	LED Steady/Flashing	•	•	•
	LED Strobe			
	LED Simulated revolving			
Sound & Volume	1 buzzer sound	Max. 85dB at 1m	Max. 85dB at 1m	Max. 85dB at 1m
	5 signal sounds			
Layer color change	Yes	Yes	Yes	Yes
Mount bracket	Direct mount	Pole mount	Direct mount	Pole mount
Bracket	TWS45, TWA45	LB18, LW18, QZ18, SZ18, QL18, SL18, QLA18	TWS80, TWA80	LB24, LW24, QZ24, SZ24, QL24, SL24, QLA24
Protection rating	IP54(Buzzer type), IP65(Standard)	IP54(Buzzer type), IP65(Standard)	IP54(Buzzer type), IP65(Standard)	IP54(Buzzer type), IP65(Standard)
Customization	2 buzzer sounds, Wall mount bracket, Strong buzzer, Black housing	2 buzzer sounds, Pole length adjustment, Strong buzzer, Black housing	2 buzzer sounds, Wall mount bracket, Strong buzzer, Black housing	2 buzzer sounds, Pole length adjustment, Strong buzzer, Black housing
Transistor	NPN	NPN	NPN	NPN
Communication	Wireless	Wireless	Wireless	Wireless

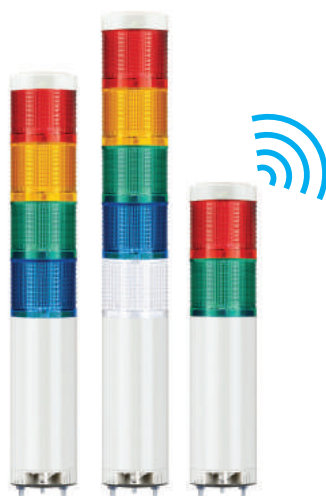
Wireless LED Signal Lights



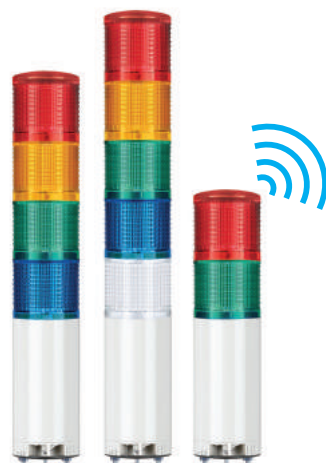
Model number	QMCL100-WIZ	QMCL125-WIZ
Voltage	DC12V, DC24V	DC12V, DC24V
Dimension (mm)	Diameter	Ø97
	Height	95
Volume	Max. 80dB at 1m	Max. 80dB at 1m
Materials	Lens-AS Housing-ABS	Lens-AS Housing-ABS
Mount bracket	Self stand	Self stand
Protection rating	IP65	IP65
Customization	Wall mount	Wall mount
Transistor	NPN	NPN
Communication	Wireless	Wireless

QTG60ML-WIZ

Wireless LED Steady/ Flashing Tower Light



QTG60ML-WIZ series



QTGA60ML-WIZ series

PC Connection Components

<p>USB Dongle</p>	<p>Suitable for single or small-scaled network Can connect up to 32 devices</p>
<p>Gateway</p>	<p>Suitable for large-scaled network One gateway unit is a single group, can connect up to 24 groups (each group can connect to 32 devices) * Network router is required for group communication.</p>

Common Specifications (QTG60ML-WIZ/ QTG60L-WIZ/ QTG70ML-WIZ/ QTG70L-WIZ)

Can remotely monitor and control the status of tower lights using a PC or smartphone

- Allows you to build an advanced production network system with a low cost
- Uses a Mesh Topology that operates in 2.4 GHz Short-Range wireless technology which ensures the communication reliability in harsh environments
- * Multi-hop function of the signaling device enables a stable long-distance communication (with up to 100M between devices)
- * Cost-effective by requiring no additional cable when change the layout of production lines
- Wireless communication standard : ZigBee(IEEE802.15.4)

QTG60ML-WIZ Ø60mm Direct Mount, LED Steady/Flashing Type

Model number	Layer	Voltage	Current	Certificates	Weight	Color
QTG60ML-WIZ Steady	1	AC/DC12V	0.170A		0.29kg	● R-Red
QTG60ML-WIZ-BZ Steady /w built-in buzzer		AC/DC24V	0.100A		0.29kg	
QTG60MLF-WIZ Steady/Flashing		AC110V-220V	Max. 0.061A		0.39kg	
QTG60MLF-WIZ-BZ Steady/Flashing /w built-in buzzer	2	AC/DC12V	0.260A		0.37kg	● R-Red ● G-Green
QTG60MLF-WIZ-BZ Steady/Flashing /w built-in buzzer		AC/DC24V	0.150A		0.37kg	
QTG60MLF-WIZ-BZ Steady/Flashing /w built-in buzzer	AC110V-220V	Max. 0.083A	0.47kg			
QTGA60ML-WIZ Steady	3	AC/DC12V	0.350A	-	0.46kg	● R-Red ● A-Amber ● G-Green
QTGA60ML-WIZ-BZ Steady /w built-in buzzer		AC/DC24V	0.200A		0.46kg	
QTGA60MLF-WIZ Steady/Flashing	AC110V-220V	Max. 0.105A	0.56kg			
QTGA60MLF-WIZ Steady/Flashing	4	AC/DC12V	0.440A		0.54kg	● R-Red ● A-Amber ● G-Green ● B-Blue
QTGA60MLF-WIZ-BZ Steady/Flashing /w built-in buzzer		AC/DC24V	0.250A		0.54kg	
QTGA60MLF-WIZ-BZ Steady/Flashing /w built-in buzzer	AC110V-220V	Max. 0.126A	0.64kg			
QTGA60MLF-WIZ-BZ Steady/Flashing /w built-in buzzer	5	AC/DC12V	0.530A		0.62kg	● R-Red ● A-Amber ● G-Green ● B-Blue ● W-White
QTGA60MLF-WIZ-BZ Steady/Flashing /w built-in buzzer		AC/DC24V	0.300A		0.62kg	
QTGA60MLF-WIZ-BZ Steady/Flashing /w built-in buzzer	AC110V-220V	Max. 0.148A	0.72kg			

* AC type model has a free-voltage range of 100V-240V.

Wiring Instructions

- External power line standard : UL1015 AWG18(0.75sq)×2C 400mm
- Signal line standard : UL1007 AWG22(0.3sq) 400mm
- LED tower light can be wiring with external contact and transistor

Customization

- High buzzer module equipped on top(Lens should be within 4 layers)
- Black housing tower lights
- 2 buzzer sound types : Both prolonged (beep, beep) and staccato (beep, beep, beep) buzzer output available
- Wall mount bracket options : Bracket structure allows for threading through the bracket hole or into the wall mount



Ordering Specification

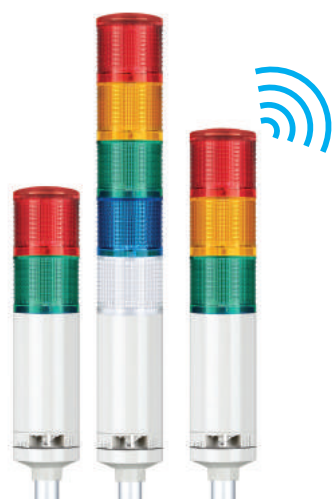
QTG60ML-WIZ	-	3	-	110/220	-	RAG
[Model number]		[Layer]		[Voltage]		[Color]
<ul style="list-style-type: none"> • QTG60ML-WIZ • QTG60ML-WIZ-BZ • QTG60MLF-WIZ • QTG60MLF-WIZ-BZ • QTGA60ML-WIZ • QTGA60ML-WIZ-BZ • QTGA60MLF-WIZ • QTGA60MLF-WIZ-BZ 		<ul style="list-style-type: none"> • 1-1Layer • 2-2Layers • 3-3Layers • 4-4Layers • 5-5Layers 		<ul style="list-style-type: none"> • 12-DC12V • 24-DC24V • 110/220 -AC110V-220V 		<ul style="list-style-type: none"> ● R-Red ● A-Amber ● G-Green ● B-Blue ● W-White

QTG60L-WIZ

Wireless LED Steady/ Flashing Tower Light





QTG60L-WIZ series



QTGA60L-WIZ series

PC Connection Components

 USB Dongle	Suitable for single or small-scaled network Can connect up to 32 devices
 Gateway	Suitable for large-scaled network One gateway unit is a single group, can connect up to 24 groups (each group can connect to 32 devices) * Network router is required for group communication.

QTG60L-WIZ Ø60mm Pole Mount, LED Steady/Flashing Type

Model number	Layer	Voltage	Current	Certificates	Weight	Color
QTG60L-WIZ Steady	1	AC/DC12V	0.170A		0.44kg	● R-Red
QTG60L-WIZ-BZ Steady /w built-in buzzer		AC/DC24V	0.100A		0.44kg	
QTG60LF-WIZ Steady/Flashing	2	AC/DC12V	0.260A		0.53kg	● R-Red ● G-Green
QTG60LF-WIZ-BZ Steady/Flashing /w built-in buzzer		AC/DC24V	0.150A		0.53kg	
QTGA60L-WIZ Steady	3	AC/DC12V	0.350A	-	0.61kg	● R-Red ● A-Amber ● G-Green
QTGA60L-WIZ-BZ Steady /w built-in buzzer		AC/DC24V	0.200A		0.61kg	
QTGA60LF-WIZ Steady/Flashing	4	AC/DC12V	0.440A		0.70kg	● R-Red ● A-Amber ● G-Green ● B-Blue
QTGA60LF-WIZ-BZ Steady/Flashing /w built-in buzzer		AC/DC24V	0.250A		0.70kg	
QTGA60LF-WIZ-BZ Steady/Flashing /w built-in buzzer	5	AC/DC12V	0.530A		0.78kg	● R-Red ● A-Amber ● G-Green ● B-Blue ● W-White
		AC/DC24V	0.300A		0.78kg	
		AC110V-220V	Max. 0.148A		0.88kg	

* AC type model has a free-voltage range of 100V-240V.

Wiring Instructions

- External power line standard : UL1015 AWG18(0.75sq)×2C 400mm
- Signal line standard : UL1007 AWG22(0.3sq) 400mm
- LED tower light can be wiring with external contact and transistor

Mounting Bracket

Standard	LB18	LW18	QZ18	SZ18	QL18	SL18	QLA18
							
Steel	Steel	PC	PC	Al	PC	Al	PC

Customization

- 2 buzzer sound types : Both prolonged (beep, beep) and staccato (beep, beep, beep) buzzer output available
- Customized pole length available
- High buzzer module equipped on top(Lens should be within 4 layers)
- Black housing tower lights

Ordering Specification

QTG60L-WIZ	-	3	-	110/220	-	RAG	-	LW18
[Model number]		[Layer]		[Voltage]		[Color]		[Mounting bracket]
<ul style="list-style-type: none"> • QTG60L-WIZ • QTG60L-WIZ-BZ • QTG60LF-WIZ • QTG60LF-WIZ-BZ • QTGA60L-WIZ • QTGA60L-WIZ-BZ • QTGA60LF-WIZ • QTGA60LF-WIZ-BZ 		<ul style="list-style-type: none"> • 1-1Layer • 2-2Layers • 3-3Layers • 4-4Layers • 5-5Layers 		<ul style="list-style-type: none"> • 12-DC12V • 24-DC24V • 110/220 -AC110V-220V 		<ul style="list-style-type: none"> • R-Red • A-Amber • G-Green • B-Blue • W-White 		<ul style="list-style-type: none"> • None -Standard • Bracket -LB18 -LW18 -QZ18 -SZ18 -QL18 -SL18 -QLA18

QTG70ML-WIZ

Wireless LED Steady/ Flashing Tower Light



QTG70ML-WIZ series



QTGA70ML-WIZ series

PC Connection Components

<p>USB Dongle</p>	<p>Suitable for single or small-scaled network Can connect up to 32 devices</p>
<p>Gateway</p>	<p>Suitable for large-scaled network One gateway unit is a single group, can connect up to 24 groups (each group can connect to 32 devices) * Network router is required for group communication.</p>

QTG70ML-WIZ Ø70mm Direct Mount, LED Steady/Flashing Type

Model number	Layer	Voltage	Current	Certificates	Weight	Color
QTG70ML-WIZ Steady	1	AC/DC12V	0.170A		0.45kg	● R-Red
QTG70ML-WIZ-BZ Steady /w built-in buzzer		AC/DC24V	0.100A		0.45kg	
		AC110V-220V	Max. 0.061A		0.55kg	
QTG70MLF-WIZ Steady/Flashing	2	AC/DC12V	0.260A		0.59kg	● R-Red ● G-Green
QTG70MLF-WIZ-BZ Steady/Flashing /w built-in buzzer		AC/DC24V	0.150A		0.59kg	
		AC110V-220V	Max. 0.083A		0.69kg	
QTGA70ML-WIZ Steady	3	AC/DC12V	0.350A	-	0.80kg	● R-Red ● A-Amber ● G-Green
QTGA70ML-WIZ-BZ Steady /w built-in buzzer		AC/DC24V	0.200A		0.80kg	
		AC110V-220V	Max. 0.105A		0.90kg	
QTGA70MLF-WIZ Steady/Flashing	4	AC/DC12V	0.440A		0.95kg	● R-Red ● A-Amber ● G-Green ● B-Blue
QTGA70MLF-WIZ-BZ Steady/Flashing /w built-in buzzer		AC/DC24V	0.250A		0.95kg	
		AC110V-220V	Max. 0.126A		0.95kg	
QTGA70MLF-WIZ-BZ Steady/Flashing /w built-in buzzer	5	AC/DC12V	0.530A		1.10kg	● R-Red ● A-Amber ● G-Green ● B-Blue ● W-White
		AC/DC24V	0.300A		1.10kg	
		AC110V-220V	Max. 0.148A		1.20kg	

* AC type model has a free-voltage range of 100V-240V.

Wiring Instructions

- External power line standard : UL1015 AWG18(0.75sq)×2C 400mm
- Signal line standard : UL1007 AWG22(0.3sq) 400mm
- LED tower light can be wiring with external contact and transistor

Customization

- High buzzer module equipped on top(Lens should be within 4 layers)
- Black housing tower lights
- 2 buzzer sound types : Both prolonged (beep, beep) and staccato (beep, beep, beep) buzzer output available
- Wall mount bracket options : Bracket structure allows for threading through the bracket hole or into the wall mount

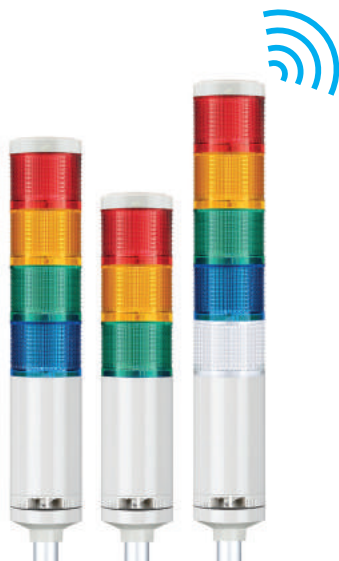


Ordering Specification

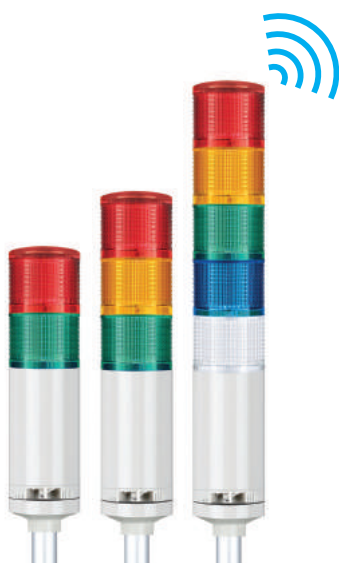
QTG70ML-WIZ	-	3	-	110/220	-	RAG
[Model number]		[Layer]		[Voltage]		[Color]
<ul style="list-style-type: none"> • QTG70ML-WIZ • QTG70ML-WIZ-BZ • QTG70MLF-WIZ • QTG70MLF-WIZ-BZ • QTGA70ML-WIZ • QTGA70ML-WIZ-BZ • QTGA70MLF-WIZ • QTGA70MLF-WIZ-BZ 		<ul style="list-style-type: none"> • 1-1Layer • 2-2Layers • 3-3Layers • 4-4Layers • 5-5Layers 		<ul style="list-style-type: none"> • 12-DC12V • 24-DC24V • 110/220 • -AC110V~220V 		<ul style="list-style-type: none"> ● R-Red ● A-Amber ● G-Green ● B-Blue ● W-White

QTG70L-WIZ

Wireless LED Steady/ Flashing Tower Light





QTG70L-WIZ series



QTGA70L-WIZ series

PC Connection Components

 USB Dongle	Suitable for single or small-scaled network Can connect up to 32 devices
 Gateway	Suitable for large-scaled network One gateway unit is a single group, can connect up to 24 groups (each group can connect to 32 devices) * Network router is required for group communication.

QTG70L-WIZ Ø70mm Pole Mount, LED Steady/Flashing Type

Model number	Layer	Voltage	Current	Certificates	Weight	Color
QTG70L-WIZ Steady	1	AC/DC12V	0.170A		0.57kg	● R-Red
QTG70L-WIZ-BZ Steady /w built-in buzzer		AC/DC24V	0.100A		0.57kg	
		AC110V-220V	Max. 0.061A		0.57kg	
QTG70LF-WIZ Steady/Flashing	2	AC/DC12V	0.260A		0.69kg	● R-Red ● G-Green
QTG70LF-WIZ-BZ Steady/Flashing /w built-in buzzer		AC/DC24V	0.150A		0.69kg	
		AC110V-220V	Max. 0.083A		0.79kg	
QTGA70L-WIZ Steady	3	AC/DC12V	0.350A	-	0.84kg	● R-Red ● A-Amber ● G-Green
QTGA70L-WIZ-BZ Steady /w built-in buzzer		AC/DC24V	0.200A		0.84kg	
		AC110V-220V	Max. 0.105A		0.94kg	
QTGA70LF-WIZ Steady/Flashing	4	AC/DC12V	0.440A		0.99kg	● R-Red ● A-Amber ● G-Green ● B-Blue
QTGA70LF-WIZ-BZ Steady/Flashing /w built-in buzzer		AC/DC24V	0.250A		0.99kg	
		AC110V-220V	Max. 0.126A		1.09kg	
QTGA70LF-WIZ Steady/Flashing	5	AC/DC12V	0.530A		1.23kg	● R-Red ● A-Amber ● G-Green ● B-Blue ● W-White
QTGA70LF-WIZ-BZ Steady/Flashing /w built-in buzzer		AC/DC24V	0.300A		1.23kg	
		AC110V-220V	Max. 0.148A		1.32kg	

※ AC type model has a free-voltage range of 100V-240V.

Wiring Instructions

- External power line standard : UL1015 AWG18(0.75sq)×2C 400mm
- Signal line standard : UL1007 AWG22(0.3sq) 400mm
- LED tower light can be wiring with external contact and transistor

Mounting Bracket

Standard	LB24	LW24	QZ24	SZ24	QL24	SL24	QLA24
							
Steel	Steel	PC	PC	Al	PC	Al	PC

Customization

- 2 buzzer sound types : Both prolonged (beep, beep) and staccato (beep, beep) buzzer output available
- Customized pole length available
- High buzzer module equipped on top(Lens should be within 4 layers)
- Black housing tower lights

Ordering Specification

QTG70L-WIZ	-	3	-	110/220	-	RAG	-	LW24
[Model number]		[Layer]		[Voltage]		[Color]		[Mounting bracket]
<ul style="list-style-type: none"> QTG70L-WIZ QTG70L-WIZ-BZ QTG70LF-WIZ QTG70LF-WIZ-BZ QTGA70L-WIZ QTGA70L-WIZ-BZ QTGA70LF-WIZ QTGA70LF-WIZ-BZ 		<ul style="list-style-type: none"> 1-1Layer 2-2Layers 3-3Layers 4-4Layers 5-5Layers 		<ul style="list-style-type: none"> 12-DC12V 24-DC24V 110/220 -AC110V-220V 		<ul style="list-style-type: none"> ● R-Red ● A-Amber ● G-Green ● B-Blue ● W-White 		<ul style="list-style-type: none"> None -Standard Bracket -LB24 -LW24 -QZ24 -SZ24 -QL24 -SL24 -QLA24

QTG-WIZ series

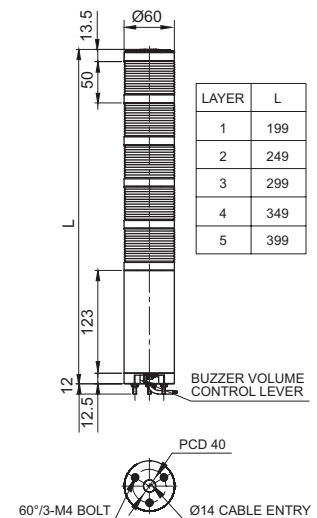
Wireless LED Steady/ Flashing Tower Light



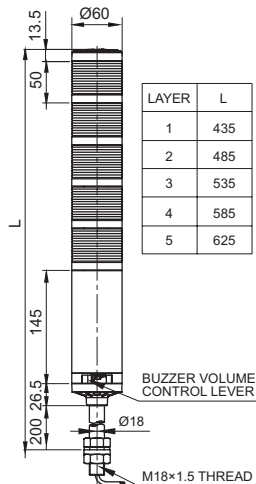
Technical Diagram

(Units : mm)

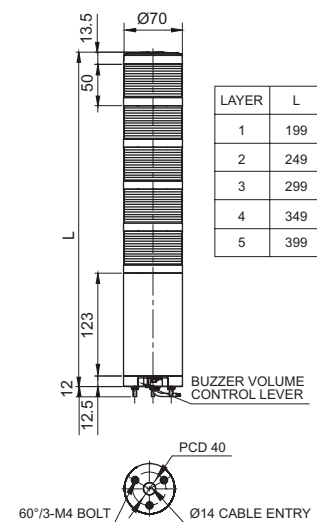
QTG60ML(F)-WIZ-Series



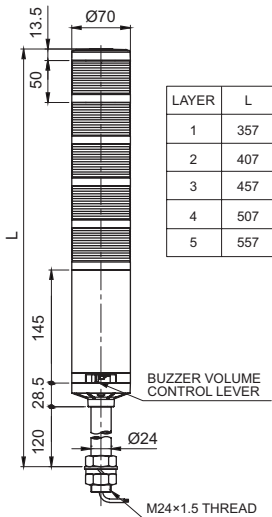
QTG60L(F)-WIZ-Series



QTG70ML(F)-WIZ-Series



QTG70L(F)-WIZ-Series



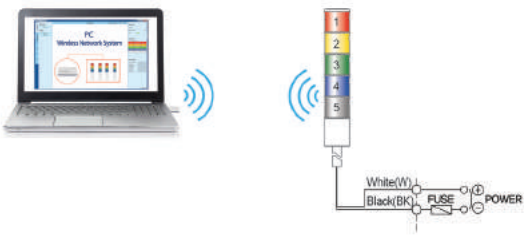
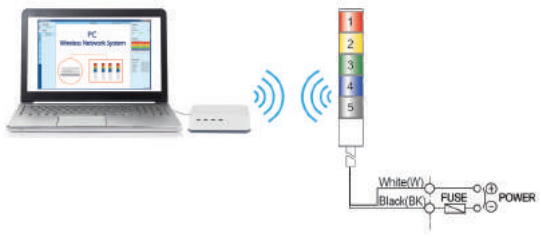

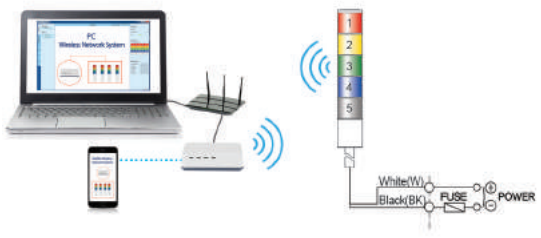
QTG-WIZ series

Wireless LED Steady/ Flashing Tower Light



Wiring Instructions

- Please wire the product as followings when you control via wireless network

Applied products	Connection by USB	
AC/DC Steady/ Flashing QTG60ML-WIZ QTG60L-WIZ QTG70ML-WIZ QTG70L-WIZ	<p style="text-align: center;">Connection via USB Dongle</p>  <p style="text-align: center;">Suitable for single or small-scaled network Can connect up to 32 devices</p>	<p style="text-align: center;">Connection via Gateway</p>  <p style="text-align: center;">Suitable for single or small-scaled network Can connect up to 32 devices</p>
Applied products	Connection by Ethernet	
AC/DC Steady/ Flashing QTG60MLF-WIZ QTG60LF-WIZ QTG70MLF-WIZ QTG70LF-WIZ	<p style="text-align: center;">Ethernet connection via Gateway</p>  <p style="text-align: center;">Suitable for single or small-scaled network Can connect up to 32 devices</p>	<p style="text-align: center;">Connection via Gateway and Ethernet Router</p>  <p style="text-align: center;">Suitable for large-scaled network One gateway unit is a single group, can connect up to 24 groups, 768 devices (each group can connect to 32 devices)</p>

- AC Steady type, AC/DC Steady/ Flashing type : External power line standard : UL1015 AWG18(0.75sq)×2C 400mm

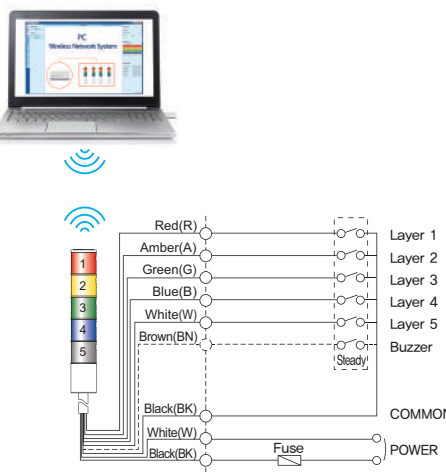
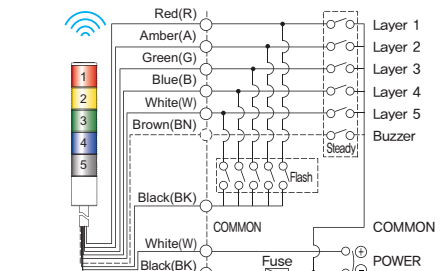
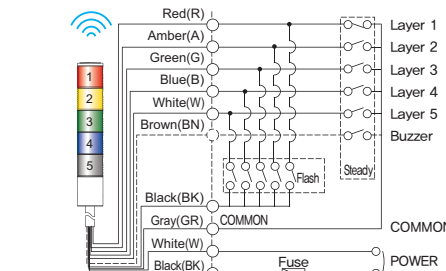
QTG-WIZ series

Wireless LED Steady/ Flashing Tower Light



Wiring Instructions

- Please wire the product by referring below instruction.
- You can monitor status of tower light and control them via wireless network.

Applied products	External Contact	
AC/DC Steady QTG60ML-WIZ QTG60L-WIZ QTG70ML-WIZ QTG70L-WIZ	 <ul style="list-style-type: none"> • QTG(A) □□(M)L – WIZ : Same wiring including buzzer type • QTG □□L ↳ Lens diameter 60(60mm) : QTG60(M)L 70(70mm) : QTG70(M)L 	
DC Steady/ Flashing QTG60MLF-WIZ QTG60LF-WIZ QTG70MLF-WIZ QTG70LF-WIZ	 <ul style="list-style-type: none"> • QTG(A) □□(M)L – WIZ : Same wiring including buzzer type • QTG □□L ↳ Lens diameter 60(60mm) : QTG60(M)L 70(70mm) : QTG70(M)L 	 <ul style="list-style-type: none"> • QTG(A) □□(M)L – WIZ : Same wiring including buzzer type • QTG □□L ↳ Lens diameter 60(60mm) : QTG60(M)L 70(70mm) : QTG70(M)L

- DC Steady type External power line & Signal line standard : UL1007 AWG22(0.3sq) 400mm
- AC Steady, AC/DC Steady/ Flashing type External power line standard : UL1015 AWG18(0.75sq)×2C 400mm
 signal line standard : UL1007 AWG22(0.3sq) 400mm

QTG-WIZ series

Wireless LED Steady/ Flashing Tower Light



Wiring Instructions

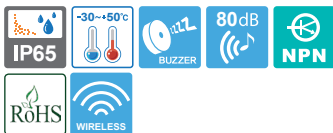
- Wiring to transistor, use the NPN transistor. Please wire properly based on wiring instructions below.

Applied products	External transistor	
<p>Product AC/DC Steady</p> <p>QTG60ML-WIZ QTG60L-WIZ QTG70ML-WIZ QTG70L-WIZ</p>	<p>• QTG(A) □□(M)L – WIZ : Same wiring including buzzer type • QTG □□L └ Lens diameter 60(60mm) : QTG60(M)L 70(70mm) : QTG70(M)L</p>	
<p>DC Steady/ Flashing</p> <p>QTG60MLF-WIZ QTG60LF-WIZ QTG70MLF-WIZ QTG70LF-WIZ</p>	<p>DC Steady/ Flashing</p> <p>• QTG(A) □□(M)L – WIZ : Same wiring including buzzer type • QTG □□L └ Lens diameter 60(60mm) : QTG60(M)L 70(70mm) : QTG70(M)L</p>	<p>AC Steady/ Flashing</p> <p>• QTG(A) □□(M)L – WIZ : Same wiring including buzzer type • QTG □□L └ Lens diameter 60(60mm) : QTG60(M)L 70(70mm) : QTG70(M)L</p>

- DC Steady type External power line & Signal line standard : UL1007 AWG22(0.3sq) 400mm
- AC Steady, AC/DC Steady/ Flashing type External power line standard : UL1015 AWG18(0.75sq)×2C 400mm
signal line standard : UL1007 AWG22(0.3sq) 400mm

QMCL-WIZ series

Wireless Multiple Color LED Steady Signal Lights



QMCL100-WIZ



QMCL125-WIZ



Common Specifications (QMCL100-WIZ/ QMCL125-WIZ)

Can remotely monitor and control the status of light units using a PC or smartphone

- Allows you to build an advanced production network system with a low cost
- Uses a Mesh Topology that operates in 2.4 GHz Short-Range wireless technology which ensures the communication reliability in harsh environments
- * Multi-hop function of the signaling device enables a stable long-distance communication (with up to 100M between devices)
- * Cost-effective by requiring no additional cable when change the layout of production lines
- Wireless communication standard : ZigBee(IEEE802.15.4)
- Can generate 7 color light signals in one light unit
- Milky translucent color when off, the soft LED illuminates designated colors when on

QMCL100-WIZ Ø100mm Wireless Multiple Color LED Steady Signal Lights

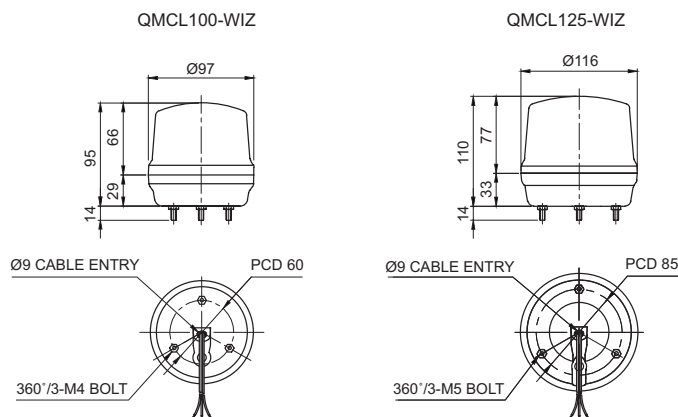
Model number	Voltage	Current	Certificates	Weight	Color
QMCL100-WIZ	DC12V	0.320A	-	0.27kg	7 Color
	DC24V	0.170A			

QMCL125-WIZ Ø125mm Wireless Multiple Color LED Steady Signal Lights

Model number	Voltage	Current	Certificates	Weight	Color
QMCL125-WIZ	DC12V	0.320A	-	0.34kg	7 Color
	DC24V	0.170A			

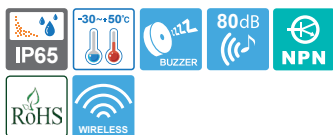
	Voltage	AC/DC12V	AC/DC24V
QMCL100-WIZ	Signal Line PowerConsumption	0.320A	0.170A
QMCL125-WIZ	Buzzer Line Power Consumption	0.020A	0.020A

Technical Diagram (Units : mm)





QMCL-WIZ series

Wireless Multiple Color LED Steady Signal Lights



· PC Connection Components

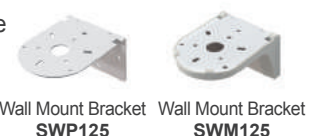
 USB Dongle	Suitable for single or small-scaled network Can connect up to 32 devices
 Gateway	Suitable for large-scaled network One gateway unit is a single group, can connect up to 24 groups (each group can connect to 32 devices) * Network router is required for group communication.

Wiring Instructions

- External signal line standard : Signal line 4P(R,G,B,K) threading, signal line standard UL1007 AWG22(0.3sq) 400mm
- Please refer to Wiring Instructions diagram to properly configure color options

Customization

- Wall mounting bracket options : Bracket structure allows for threading through the bracket hole or into the wall mount



Ordering Specification

QMCL100-WIZ	-	BZ	-	24
[Model number]		[Buzzer option]		[Voltage]
• QMCL100-WIZ • QMCL125-WIZ		• None - No buzzer • BZ- Built-in buzzer		• 12-DC12V • 24-DC24V

QMCL-WIZ series

Wireless Multiple Color LED Steady Signal Lights



Wiring Instructions

• Please refer to Wiring Instructions diagram to properly configure wireless network option.

Applied products Connection by USB

QMCL100-WIZ
QMCL125-WIZ



Applied products Connection by Ethernet

QMCL100-WIZ
QMCL125-WIZ

Ethernet connection via Gateway

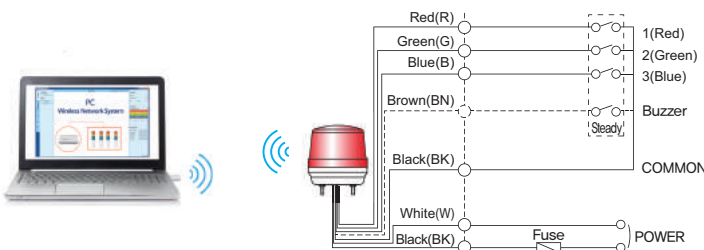
Connection via Gateway and Ethernet Router



• Please refer to below wiring Instructions diagram to properly configure external contact and transistor options.

Applied products External Contact

QMCL100-WIZ
QMCL125-WIZ

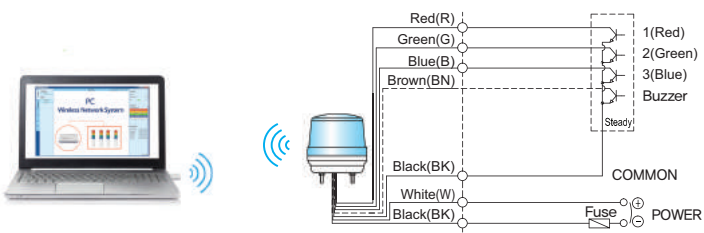


< Wiring Configuration for Signal Color >

No.	Color	Wiring
1	Red	1(Red)
2	Green	2(Green)
3	Blue	3(Blue)
4	Amber	1(Red)+2(Green)
5	Cyan	2(Green)+3(Blue)
6	Purple	1(Red)+3(Blue)
7	White	1(Red)+2(Green)+3(Blue)

Applied products External Transistor

QMCL100-WIZ
QMCL125-WIZ



< Wiring Configuration for Signal Color >

No.	Color	Wiring
1	Red	1(Red)
2	Green	2(Green)
3	Blue	3(Blue)
4	Amber	1(Red)+2(Green)
5	Cyan	2(Green)+3(Blue)
6	Purple	1(Red)+3(Blue)
7	White	1(Red)+2(Green)+3(Blue)



FOR YOUR SAFETY

Specification and dimensions listed in this catalogue are subject to change without prior notice for product quality improvement. The newest product information is available on our web site. (www.qlight.com) Please read the Instruction Manual attached to the product carefully before installation and use.



Qlight Co.,Ltd. Headquarters www.qlight.com | trade@qlight.com

BUSAN HEAD OFFICE / FACTORY

185-25, Mukbang-Ro, Sangdong-Myeon, Gimhae-Si, Gyeongsangnam-Do, Korea Tel. +82 . 80 . 328 . 1111 Fax. +82 . 55 . 328 . 4064

SEOUL OFFICE

A-412, 579 Kyungin-Ro, Guro-Gu, Seoul, Korea(Ansyng B/D, Shindorim-Dong) Tel. +82 . 80 . 328 . 2222 Fax. +82 . 2 . 2679 . 6154

PUBLIC RELATIONS / MARKETING TEAM

Nakdong-daero, Sasang-gu, Busan, Korea(Qlight building, Eomgung-Dong) Tel. +82 . 51 . 245 . 0017 Fax. +82 . 51 . 243 . 9826

Qlight USA, Inc. www.qlight.com www.qlightusa.com | sales@qlightusa.com

3003 North First Street, Suite #341, San Jose, CA 95134 USA Tel. +1 . 408 . 519 . 5740 Fax. +1 . 408 . 519 . 5739

Qlight China Corporation www.qlight.com www.qlightcn.com | qlightcn@qlight.com

SHANGHAI HEAD OFFICE / FACTORY

#19, Nanda Road, Baoshan Area, Shanghai, China Tel. +86 . 21 . 6651 . 7100 / 7200 / 7106 Fax. +86 . 21 . 6315 . 3929

www.qlight.com | www.qlightcn.com | qlightcn@qlight.com



WARNING LIGHT | ELECTRONIC HORN | SIGNAL TOWER LIGHT | EMERGENCY LIGHT BAR | LED OBSTRUCTION LIGHT | LED WORK LIGHT