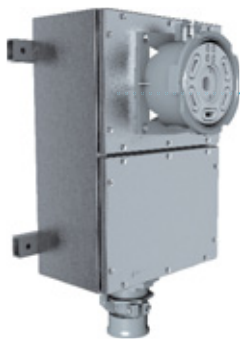


# PFC5 & C6

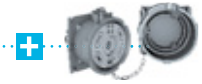
HEAVY-DUTY PLUGS & SOCKETS



## WALL MOUNTING SOCKET PFC5



Box  
496A023070



Socket-outlet  
4954017

## PLUG PFC5



Angled Handle  
496A913-70



Inlet  
4958017

## MAIN FEATURES

Rated current	500 A (PFC5)/600 A (PFC6)	Flexible wiring (min-max)	95-240 mm <sup>2</sup>
Maximum voltage	1 000 V	Stranded wiring (min-max)	95-240 mm <sup>2</sup>
IP protection lid closed	IP66/IP67	Wiring for single or multi entry	
IP protection plug connected	IP66/IP67	Keying positions	7
Shock resistance	IK10	Auxiliary contacts (20 A/400 V)	2
Ambient temperature	-40 °C to +60 °C	Pilot contacts (20 A/400 V)	2

**SOCKET-  
OUTLET** female  
**PFC5 (500 A)**



**INLET** male  
**PFC5 (500 A)**



380-440 V AC	3P+E	4954013	4958013
220-250 V AC 380-440 V AC	3P+N+E	4954017	4958017
660-690 V AC	3P+E	4954193	4958193
380-400 V AC 660-690 V AC	3P+N+E	4954197	4958197
1000 V AC	3P+E	4954223	4958223

**SOCKET-  
OUTLET** female  
**PFC6 (600 A)**



**INLET** male  
**PFC6 (600 A)**



380-440 V AC	3P+E	4964013	4968013
220-250 V AC 380-440 V AC	3P+N+E	4964017	4968017
660-690 V AC	3P+E	4964193	4968193
380-400 V AC 660-690 V AC	3P+N+E	4964197	4968197
1000 V AC	3P+E	4964223	4968223