

**ULTRASONIC THICKNESS GAUGES & LEAK DETECTOR**

# Cygnus CATALOGUE



## Surface Thickness Gauges



Cygnus 2  
Hands Free



Cygnus 2+  
Hands Free



Cygnus 4  
General Purpose



Cygnus 4+  
General Purpose



Cygnus 6+ PRO



Cygnus 1 Intrinsically  
Safe ATEX



Cygnus  
Heavy Duty

## Subsea Thickness Gauges



Cygnus DIVE



Cygnus  
Underwater



Cygnus ROV Mountable  
2000 m / 4000 m



Cygnus MINI ROV  
Mountable

## Hatch Sure - Hatch Cover Leak Detector



Cygnus  
HATCH SURE

## CONTENTS

Page

### Surface Thickness Gauges, Probes & Leads

Cygnus 2 HANDS FREE	2
Cygnus 2+ HANDS FREE	3
Cygnus 4 GENERAL PURPOSE	4
Cygnus 4+ GENERAL PURPOSE	5
Cygnus 6+ PRO	6
Cygnus 1 INTRINSICALLY SAFE ATEX	7
Cygnus HEAVY DUTY	8

### Subsea Thickness Gauges, Probes & Leads

Cygnus DIVE Mk2	9-11
Cygnus UNDERWATER	12
Cygnus ROV Mountable 2/4 km	13-14
Cygnus MINI ROV Mountable	15

### Thickness Gauge Probes, Spares & Accessories

Cygnus Probes	16
Probe Leads	17
Spare Knurled Rings & Membranes	18
Accessories	19
Probes for Cygnus Supported Products	20
Spare Parts for Cygnus Products	21

### Hatch Cover Leak Detector

Cygnus HATCH SURE	22
-------------------	----

Guide to Serial Numbers for Cygnus Gauges	23
---	----





# Cygnus 2 HANDS FREE

## Multiple Echo Ultrasonic Thickness Gauge

The Cygnus 2 HANDS FREE is housed in an extremely tough, rubber sealed enclosure with in-built display and extra durable buttons. Designed for use in rope access or belt mounted applications where the end-mounted organic LED display can be easily read whilst taking measurements. The Cygnus 2 is supplied in a protective carry case.



### Cygnus 2 HANDS FREE Kit

Cygnus 2 UTG Kit

Kit contents: Cygnus 2 HANDS FREE Ultrasonic Thickness Gauge (UTG), batteries (3 x AA), 15mm/0.5" steel test block, ultrasonic couplant, membrane couplant, accessory pouch, neck strap & fixings, wrist strap, mini USB to USB cable (for firmware updates), operation manual and carry case.

(The gauge has a Lemo 1 connector)

Please select your probe & lead from the lists below:

Order Code

050-2000/5



### Single Crystal Probes for Cygnus 2 HANDS FREE Gauges

(All Probes are supplied with 20 membranes & membrane key)

Probe S2C Single 2.25MHz 13mm with BNC connector

Order Code

004-9500

Probe S2D Single 2.25MHz 19mm with BNC connector

004-9502

Probe S3C Single 3.5MHz 13mm with BNC connector

004-9504

Probe S5C Single 5MHz 13mm with BNC connector

004-9508

lead for use with the above single crystal probes & a Cygnus 2:

Probe Lead Lemo 1 - BNC 1.4m (4'6")

004-0406



Probe S5A Single 5MHz 6mm with Single Lemo 00 connector

004-9507

lead for use with the S5A probe & a Cygnus 2:

Probe Lead Single Lemo 1 - Single Lemo 00 1.35 m (4'6")

004-0401



### Right Angle Probe for Cygnus 2 HANDS FREE Gauges

(All right angle probes are supplied with 1.35 m integral probe lead with a Lemo 1 connector, 20 membranes & membrane key)

Right Angle Probe 2.25MHz 13mm (1/2") Lemo 1 (integral cable)

Order Code

001-9387

Right Angle Probe 3.5MHz 13mm (1/2") Lemo 1 (integral cable)

001-9389

Right Angle Probe 5.0MHz 6mm (1/4") Lemo 1 (integral cable)

001-9390

### Marinised (underwater) Probes for Cygnus 2 HANDS FREE Gauges

(Please add Marinised Cable length as required for all Marinised Probe orders. Cable includes a Lemo 1 connector to connect with the gauge)

Marinised Probe S2C 2.25MHz 13mm

Order Code

002-9387

Marinised Probe S2D 2.25MHz 19mm

002-9388

Cable Heavy Duty Marinised Underwater priced per metre

001-0444

Cable Standard Marinised Underwater priced per metre

001-0434

(50m max. length for "S2-" (2.25MHz) probes, for other frequencies please contact Cygnus)

### Accessories for Cygnus 2 HANDS FREE

Neck Strap with fixings for Mk5 gauges

(supplied as part of gauge kit)

Order Code

050-0115

Hand Strap with fixing for Mk5 Gauges

(supplied as part of gauge kit)

050-0110



Belt Clip with fixing for Mk5 gauges

050-0100



Peli Carry Case for Cygnus 2, 2+ & 4 Mk5 Gauge Kit

050-4010/5

For Spare Leads see page 17 & for Spare Knurled Rings & Membranes page 18



# Cygnus 2<sup>+</sup> HANDS FREE

## Multi-Mode Ultrasonic Thickness Gauge

All the benefits of the Cygnus 2, plus it can be used in 3 measuring modes:

- \* Multiple Echo with Single Crystal probes
- \* Echo-Echo with Twin Crystal probes
- \* Single Echo with Twin Crystal probes



### Cygnus 2<sup>+</sup> HANDS FREE Kit

Cygnus 2+ UTG Kit

Order Code

050-2500/5

Kit contents: Cygnus 2<sup>+</sup> HANDS FREE Ultrasonic Thickness Gauge (UTG), batteries (3 x AA), 15mm/0.5" steel test block, ultrasonic couplant, membrane couplant, accessory pouch, neck strap & fixings, wrist strap, mini USB to USB cable, operation manual and carry case.  
(The gauge has a Twin Lemo 00 connector)

Please select your probe & lead from the lists below:



### Single Crystal Probes for Cygnus 2<sup>+</sup> HANDS FREE Gauges

Order Code

(All Probes are supplied with 20 membranes & membrane key)

Probe S2C Single 2.25MHz 13mm with BNC connector	004-9500
Probe S2D Single 2.25MHz 19mm with BNC connector	004-9502
Probe S3C Single 3.5MHz 13mm with BNC connector	004-9504
Probe S5C Single 5MHz 13mm with BNC connector	004-9508
lead for use with the above single crystal probes & a Cygnus 2+:	
Probe Lead Twin Lemo 00 to BNC 1.35m (4'6")	004-0410



Probe S5A Single 5MHz 6mm with Single Lemo 00 connector	004-9507
lead for use with the S5A probe & a Cygnus 2+:	
Probe Lead Twin Lemo 00 to Single Lemo 00 1.4m (4'6")	004-0412



### Twin Crystal Probes for Cygnus 2+ HANDS FREE gauges

Order Code

Probe T2C Twin 2MHz 13mm (1/2") with Twin Lemo 00 connector	004-9550
Probe T5B Twin 5MHz 8mm (1/3") with Twin Lemo 00 connector	004-9555
lead for use with the above twin crystal probes & a Cygnus 2+:	
Probe Lead Twin Lemo 00 to Twin Lemo 00 1.35m (4'6")	004-0411



Probe T7A Twin 7.5MHz 5mm (3/6") integral cable Twin Lemo 00	004-9575
--	----------



### 4 Step Test Block for use with Twin Crystal Probes (non-discountable items)

Order Code

4 Step Steel Test Block, metric 2.5 - 20mm	001-4858
4 Step Steel Test Block, imperial 0.1 - 0.75 inch	001-4859



### Marinised (underwater) Probes for Cygnus 2+ HANDS FREE Gauges

Order Code

Marinised Probe S2C 2.25MHz 13mm	002-9387
Marinised Probe S2D 2.25MHz 19mm	002-9388
Marinised Probe S3C 3.5MHz 13mm	002-9389
Cable Heavy Duty Marinised Underwater priced per metre	001-0444
Cable Standard Marinised Underwater priced per metre	001-0434
(50m max. length for "S2-" (2.25MHz) probes, for other frequencies please contact Cygnus)	
Twin Lemo 00 to Single Lemo 1 adapter for Mk5 "+" models	050-0106
this adapter is required for using the above marinised probes with a "+" model Mk5 gauge	



Twin Lemo 00 to Single Lemo 1 adapter

### Accessories for Cygnus 2<sup>+</sup> HANDS FREE

Order Code

Neck Strap with fixings for Mk5 gauges (supplied as part of gauge kit)	050-0115
Hand Strap with fixing for Mk5 Gauges (supplied as part of gauge kit)	050-0110
Belt Clip with fixing for Mk5 gauges	050-0100
Peli Carry Case for Cygnus 2, 2+ & 4 Mk5 Gauge Kit	050-4010/5



For Spare Leads see page 17 & for Spare Knurled Rings & Membranes page 18



# Cygnus 4 GENERAL PURPOSE

## Multiple Echo Ultrasonic Thickness Gauge

A compact general purpose Ultrasonic Thickness Gauge (UTG) giving accurate, error-checked through-coating measurements using our Multiple Echo technology. Highly versatile, can be used either right or left handed, in most industrial or shipping applications. The LCD display is easily read outdoors and is perfect for use in all light conditions. Vibration alert settings for user feedback.



### Cygnus 4 GENERAL PURPOSE Kit

Cygnus 4 UTG kit

Kit contents: Cygnus 4 GENERAL PURPOSE Ultrasonic Thickness Gauge (UTG), batteries (3 x AA), 15mm/0.5" steel test block, ultrasonic couplant, accessory pouch, neck strap & fixings, wrist strap, mini USB to USB cable (for firmware updates), operation manual & carry case.  
(The gauge has a Lemo 1 connector)

Please select your probe & lead from the lists below:

Order Code

050-4000/5



### Probes for Cygnus 4 GENERAL PURPOSE Gauges

(All Probes are supplied with 20 membranes & membrane key)

Probe S2C Single 2.25MHz 13mm with BNC connector	004-9500
Probe S2D Single 2.25MHz 19mm with BNC connector	004-9502
Probe S3C Single 3.5MHz 13mm with BNC connector	004-9504
Probe S5C Single 5MHz 13mm with BNC connector	004-9508
lead for use with the above single crystal probes & a Cygnus 4	
Probe Lead Lemo 1 - BNC 1.4m (4'6")	004-0406



Probe S5A Single 5MHz 6mm with Single Lemo 00 connector	004-9507
---	----------

lead for use with the S5A probe & a Cygnus 4

Probe Lead Single Lemo 1 - Single Lemo 00 1.35 m (4'6")	004-0401
---	----------



### Right Angle Probes for Cygnus 4 GENERAL PURPOSE Gauges

(All right angle probes are supplied with 1.35 m integral probe lead with a Lemo 1 connector, 20 membranes & membrane key)

Right Angle Probe 2.25MHz 13mm (1/2") Lemo 1(integral cable)	001-9387
Right Angle Probe 3.5MHz 13mm (1/2") Lemo 1 (integral cable)	001-9389
Right Angle Probe 5.0MHz 6mm (1/4") Lemo 1 (integral cable)	001-9390

### Marinised (underwater) Probes for Cygnus 4 GENERAL PURPOSE Gauges

(Please add Marinised Cable length as required for all Marinised Probe orders. Cable includes a Lemo 1 connector to connect with the gauge)

Marinised Probe S2C 2.25MHz 13mm	002-9387
Marinised Probe S2D 2.25MHz 19mm	002-9388
Cable Heavy Duty Marinised Underwater priced per metre	001-0444
Cable Standard Marinised Underwater priced per metre	001-0434

(50m max. length for "S2-" (2.25MHz) probes, for other frequencies please contact Cygnus)

### Accessories for Cygnus 4 GENERAL PURPOSE

Neck Strap with fixings for Mk5 gauges (supplied as part of gauge kit)	050-0115
Hand Strap with fixing for Mk5 Gauges	050-0110
Belt Clip with fixing for Mk5 gauges	050-0100
Peli Carry Case for Cygnus 2, 2+ & 4 Mk5 Gauge Kit	050-4010/5



For Spare Leads see page 17 & for Spare Knurled Rings & Membranes page 18



# Cygnus 4+ GENERAL PURPOSE

## Multi-Mode Ultrasonic Thickness Gauge

All the benefits of the Cygnus 4, plus A-Scan display and sequential data logging as standard. A data logging upgrade is also available to add extra data logging functions. The gauge can be used in 3 measuring modes:

- \* Multiple Echo with Single Crystal probes
- \* Echo-Echo with Twin Crystal probes
- \* Single Echo with Twin Crystal probes



### Cygnus 4+ GENERAL PURPOSE Kit

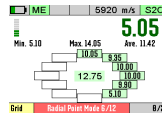
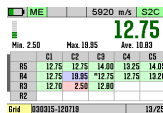
Cygnus 4+ UTG Kit

Kit contents: Cygnus 4+ GENERAL PURPOSE Ultrasonic Thickness Gauge (UTG) with sequential data logging as standard, batteries (3 x AA), 15mm/0.5" steel test block, ultrasonic couplant, membrane couplant, accessory pouch, neck strap & fixings, wrist strap, SD card, CygLink software, USB data cable, operation manual and carry case. (The gauge has a Twin Lemo 00 connector)

Please select your probe & lead from the lists below:

Data Logging upgrade for Cygnus 4+

adds grid logging & radial points facility



Order Code

050-4500/5



050-4520

### Probes for Cygnus 4+ GENERAL PURPOSE Gauges

(All Probes are supplied with 20 membranes & membrane key)

Probe S2C Single 2.25MHz 13mm with BNC connector	004-9500
Probe S2D Single 2.25MHz 19mm with BNC connector	004-9502
Probe S3C Single 3.5MHz 13mm with BNC connector	004-9504
Probe S5C Single 5MHz 13mm with BNC connector	004-9508
lead for use with the above single crystal probes & a Cygnus 4+:	
Probe Lead Twin Lemo 00 to BNC 1.35m (4'6")	004-0410



Probe S5A Single 5MHz 6mm with Single Lemo 00 connector	004-9507
lead for use with the S5A probe & a Cygnus 4+:	
Probe Lead Twin Lemo 00 to Single Lemo 00 1.4m (4'6")	004-0412



### Twin Crystal Probes for Cygnus 4+ GENERAL PURPOSE gauges

Probe T2C Twin 2MHz 13mm (1/2") with Twin Lemo 00 connector	004-9550
Probe T5B Twin 5MHz 8mm (1/3") with Twin Lemo 00 connector	004-9555
lead for use with the above twin crystal probes & a Cygnus 4+:	
Probe Lead Twin Lemo 00 to Twin Lemo 00 1.35m (4'6")	004-0411



Probe T7A Twin 7.5MHz 5mm (3/6") integral cable Twin Lemo 00	004-9575
--	----------



### 4 Step Test Block for use with Twin Crystal Probes (non-discountable items)

4 Step Steel Test Block, metric 2.5 - 20mm	001-4858
4 Step Steel Test Block, imperial 0.1 - 0.75 inch	001-4859



### Marinised (underwater) Probes for Cygnus 4+ HANDS FREE Gauges

Marinised Probe S2C 2.25MHz 13mm	002-9387
Marinised Probe S2D 2.25MHz 19mm	002-9388
Marinised Probe S3C 3.5MHz 13mm	002-9389
Cable Heavy Duty Marinised Underwater priced per metre	001-0444
Cable Standard Marinised Underwater priced per metre	001-0434

(50m max. length for "S2-" (2.25MHz) probes, for other frequencies please contact Cygnus)

Twin Lemo 00 to Single Lemo 1 adapter for Mk5 "+" models	050-0106
--	----------

this adapter is required for using the above marinised probes with a "+" model Mk5 gauge



Twin Lemo 00 to Single Lemo 1 adapter

### Accessories for Cygnus 4+ GENERAL PURPOSE

Mini USB cable for data transfer	050-0120
(supplied as part of gauge kit)	
Neck Strap with fixings for Mk5 gauges	050-0115
(supplied as part of gauge kit)	
Hand Strap with fixing for Mk5 Gauges	050-0110
(supplied as part of gauge kit)	
Belt Clip with fixing for Mk5 gauges	050-0100
Peli Carry Case for Cygnus 4+ Mk5 Gauge Kit	050-4511/5



For Spare Leads see page 17 & for Spare Knurled Rings & Membranes page 18





# Cygnus 6+ PRO

## Multi-Mode Ultrasonic Thickness Gauge

The Cygnus 6+ PRO has a front LED display plus an end mounted OLED display. It includes all the features of the 4+, plus comprehensive data logging, which includes grids, radial points & the facility to add bespoke templates. It has a B-Scan display. It also includes the option to choose manual gain control if required. The gauge can be connected to a computer either via the USB cable supplied or Bluetooth (please note the Bluetooth dongle is sold separately)

### Cygnus 6+ PRO Kit

#### Cygnus 6+ Kit

Kit contents: Cygnus 6+ GENERAL PURPOSE Ultrasonic Thickness Gauge (UTG), batteries (3 x AA), 15mm/0.5" steel test block, ultrasonic couplant, membrane couplant, accessory pouch, neck strap & fixings, wrist strap, SD card, CygLink software, USB data cable, operation manual and carry case.  
(The gauge has a Twin Lemo 00 connector)

**Please select your probe & lead from the lists below:**

Order Code

050-6500/5



### Probes for Cygnus 6+ PRO Gauges

(All Probes are supplied with 20 membranes & membrane key)

Order Code

Probe S2C Single 2.25MHz 13mm with BNC connector

004-9500

Probe S2D Single 2.25MHz 19mm with BNC connector

004-9502

Probe S3C Single 3.5MHz 13mm with BNC connector

004-9504

Probe S5C Single 5MHz 13mm with BNC connector

004-9508

**lead for use with the above single crystal probes & a Cygnus 6+:**

Probe Lead Twin Lemo 00 to BNC 1.35m (4'6")

004-0410



Probe S5A Single 5MHz 6mm with Single Lemo 00 connector

004-9507

**lead for use with the S5A probe & a Cygnus 6+:**

Probe Lead Twin Lemo 00 to Single Lemo 00 1.4m (4'6")

004-0412



### Twin Crystal Probes for Cygnus 6+ PRO gauges

Order Code

Probe T2C Twin 2MHz 13mm (1/2") with Twin Lemo 00 connector

004-9550

Probe T5B Twin 5MHz 8mm (1/3") with Twin Lemo 00 connector

004-9555

**lead for use with the above twin crystal probes & a Cygnus 6+:**

Probe Lead Twin Lemo 00 to Twin Lemo 00 1.35m (4'6")

004-0411



Probe T7A Twin 7.5MHz 5mm (3/6") integral cable Twin Lemo 00

004-9575



### 4 Step Test Block for use with Twin Crystal Probes (non-discountable items)

Order Code

4 Step Steel Test Block, metric 2.5 - 20mm

001-4858

4 Step Steel Test Block, imperial 0.1 - 0.75 inch

001-4859



### Marinised (underwater) Probes for Cygnus 6+ HANDS FREE Gauges

Order Code

Marinised Probe S2C 2.25MHz 13mm

002-9387

Marinised Probe S2D 2.25MHz 19mm

002-9388

Marinised Probe S3C 3.5MHz 13mm

002-9389

Cable Standard Marinised Underwater priced per metre

001-0434

Cable Heavy Duty Marinised Underwater priced per metre

001-0444

(50m max. length for "S2-" (2.25MHz) probes, for other frequencies please contact Cygnus)

Twin Lemo 00 to Single Lemo 1 adapter for Mk5 "+" models

050-0106

this adapter is required for using the above marinised probes with a "+" model Mk5 gauge

### Accessories for Cygnus 6+ PRO

Order Code

Mini USB cable for data transfer

050-0120

(supplied as part of gauge kit)

Bluetooth Adapter V4.0 USB Belkin

050-0125

(not included in gauge kit - needs to be ordered if required)

Neck Strap with fixings for Mk5 gauges

050-0115

(supplied as part of gauge kit)

Hand Strap with fixing for Mk5 Gauges

050-0110

(supplied as part of gauge kit)

Belt Clip with fixing for Mk5 gauges

050-0100

Peli Carry Case for Cygnus 6+ Mk5 Gauge Kit

050-6511/5



For Spare Leads see page 17 & for Spare Knurled Rings & Membranes page 18



# Cygnus 1 INTRINSICALLY SAFE ATEX

## Multiple Echo Ultrasonic Thickness Gauge

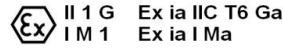
A tough, ruggedised Ultrasonic Thickness Gauge (UTG) designed for safe use in potentially explosive environments. The Cygnus 1 INTRINSICALLY SAFE ATEX uses our Multiple Echo technology to take thickness measurements through protective coatings. It is supplied ready to use as a complete kit in a protective carry case with 2 rechargeable batteries.

### ATEX Certification:

Group II Category 1G Ex ia IIC T6 Ga (Tamb = 0C to 45C)

Group I Category M1 Ex ia I Ma

Certificate No: BAS00ATEX1108



Nato Stock No: 5220-99-234-4651

### Cygnus 1 INTRINSICALLY SAFE ATEX Kits

Cygnus 1 INTRINSICALLY SAFE ATEX Kit with 2.25MHz 13mm Probe

Order Code

001-7121/3

*Kit contents: Cygnus 1 INTRINSICALLY SAFE ATEX Certified Mk 3 Ultrasonic Thickness Gauge (UTG), 2 rechargeable batteries, S2C Probe 2.25MHz 13 mm (1/2") with nose cone, torque bar, 20 membranes, membrane key, membrane couplant, steel test block, ultrasonic couplant, battery charger, calibration jumper lead, trim tool, hex key, spare 'O'-rings, operation manual and carry case.*

Cygnus 1 INTRINSICALLY SAFE ATEX Kit, without Probe

001-9921/3

*Kit contents: As above but without probe. Please select probe from list below*



### Probes for Cygnus 1 INTRINSICALLY SAFE (IS) ATEX Gauges

Order Code

*(All Probes are supplied as nose cone assembly with 1 m cable, and with torque bar, 20 membranes and membrane key.)*

Probe S2C 2.25 MHz 13 mm (1/2") for Cygnus 1 IS ATEX Mk 3

001-9412-ATEX

Probe S2D 2.25 MHz 19 mm (3/4") for Cygnus 1 IS ATEX Mk 3

001-9411-ATEX

Probe S3C 3.5 MHz 13 mm (1/2") for Cygnus 1 IS ATEX Mk 3

001-9413-ATEX

Probe S5C 5.0 MHz 13 mm (1/2") for Cygnus 1 IS ATEX Mk 3

001-9344-ATEX

Probe S5A 5.0 MHz 6 mm (1/4") for Cygnus 1 IS ATEX Mk 3

001-9345-ATEX



### Right Angle Probes for Cygnus 1 INTRINSICALLY SAFE (IS) ATEX Gauges

Order Code

*(All Right Angle Probes are supplied as nose cone assembly with 1 m cable, and with torque bar, 20 membranes and membrane key.)*

Right Angle Probe 2.25 MHz 13 mm for Cygnus 1 IS ATEX Mk 3

001-9403

Right Angle Probe 3.5 MHz 13 mm for Cygnus 1 IS ATEX Mk 3

001-9405

Right Angle Probe 5.0 MHz 6 mm for Cygnus 1 IS ATEX Mk 3

001-9406

Right Angle Probe 5.0 MHz 13 mm for Cygnus 1 IS ATEX Mk 3

001-9407



### General Spares for Cygnus 1 INTRINSICALLY SAFE (IS) ATEX

Order Code

Battery for Cygnus 1 INTRINSICALLY SAFE ATEX Gauge Mk 3

001-1505-ATEX

*T6 Rated NiMH Battery for ATEX Gauges from Serial Number 3232. Supplied Uncharged.*

Battery Charger for Cygnus UW / IS Mk 3/4 (UK Mains Plug)

001-1514

Battery Charger for Cygnus UW / IS Mk 3/4 (US Mains Plug)

001-1515

Battery Charger for Cygnus UW / IS Mk 3/4 (EU Mains Plug)

001-1516

Calibration Jumper Lead for Cygnus 1 IS, UW & HD Gauges

001-0410

Calibration Trim Tool

001-2600

Hex Key for Cygnus 1 INTRINSICALLY SAFE Gauge

001-2619

Nose Cone Torque Bar

001-2620

'O' Ring Pack for Cygnus 1 IS/ROV Gauges Mk 3/4

001-3713

*For Spare Leads see page 17 & for Spare Knurled Rings & Membranes page 18*

*For Probes for Cygnus 1 INTRINSICALLY SAFE Mk 2 or Mk 1 (or below Serial No. 3232) see Probes for Cygnus Supported Products 20-21*

*For Batteries & Chargers for Cygnus 1 INTRINSICALLY SAFE Mk 2 or Mk 1 (or below Serial No. 3232) see Spare Parts for Cygnus Products page 21-22*





# Cygnus HEAVY DUTY

## Multiple Echo Ultrasonic Thickness Gauge

A tough, ruggedised Ultrasonic Thickness Gauge (UTG) using Cygnus Multiple Echo technology, designed for use in demanding environments. The mechanical design of the Cygnus Heavy Duty has been proved and improved over nearly 30 years. This hardy and reliable tool is supplied ready to use as a complete kit in a protective carry case.



Nato Stock No: 5220-99-075-8576

### Cygnus HEAVY DUTY Kits

Cygnus HEAVY DUTY UTG Kit with 2.25MHz 13mm Probe

Kit contents: Cygnus HEAVY DUTY Ultrasonic Thickness Gauge (UTG), battery pack, S2C Probe 2.25MHz 13 mm (1/2") with nose cone, torque bar, 20 membranes, membrane key, membrane couplant, steel test block, ultrasonic couplant, calibration jumper lead, spare 'O'-rings, operation manual and carry case.

Cygnus HEAVY DUTY UTG Kit, without Probe

Kit contents: As above but without probe. Please select probe from list below

Order Code

001-7111/4

001-9911/4



### Probes for Cygnus HEAVY DUTY (HD) Gauges

(All Probes are supplied as nose cone assembly with 1 m cable, and with torque bar, 20 membranes and membrane key.)

Probe S2C 2.25 MHz 13 mm (1/2") for Cygnus HEAVY DUTY

Probe S2D 2.25 MHz 19 mm (3/4") for Cygnus HEAVY DUTY

Probe S3C 3.5 MHz 13 mm (1/2") for Cygnus HEAVY DUTY

Probe S5C 5.0 MHz 13 mm (1/2") for Cygnus HEAVY DUTY

Probe S5A 5.0 MHz 6 mm (1/4") for Cygnus HEAVY DUTY

Order Code

001-9330

001-9332

001-9355

001-9334

001-9336



### Right Angle Probes for Cygnus HEAVY DUTY (HD) Gauges

(All Right Angle Probes are supplied as nose cone assembly with 1 m cable, and with torque bar, 20 membranes and membrane key.)

Right Angle Probe 2.25 MHz 13 mm for Cygnus HEAVY DUTY

Right Angle Probe 3.5 MHz 13 mm for Cygnus HEAVY DUTY

Right Angle Probe 5.0 MHz 13 mm for Cygnus HEAVY DUTY

Right Angle Probe 5.0 MHz 6 mm for Cygnus HEAVY DUTY

Order Code

001-9367

001-9369

001-9371

001-9370



### General Spares for Cygnus HEAVY DUTY (HD)

Battery Insert Plate (3 x AA) for Cygnus HEAVY DUTY Mk 3/4

Calibration Jumper Lead for Cygnus 1 IS, UW & HD Gauges

Calibration Trim Tool

Nose Cone Torque Bar

'O' Ring Pack for Cygnus HD Gauge

Order Code

001-3723

001-0410

001-2600

001-2620

001-3718



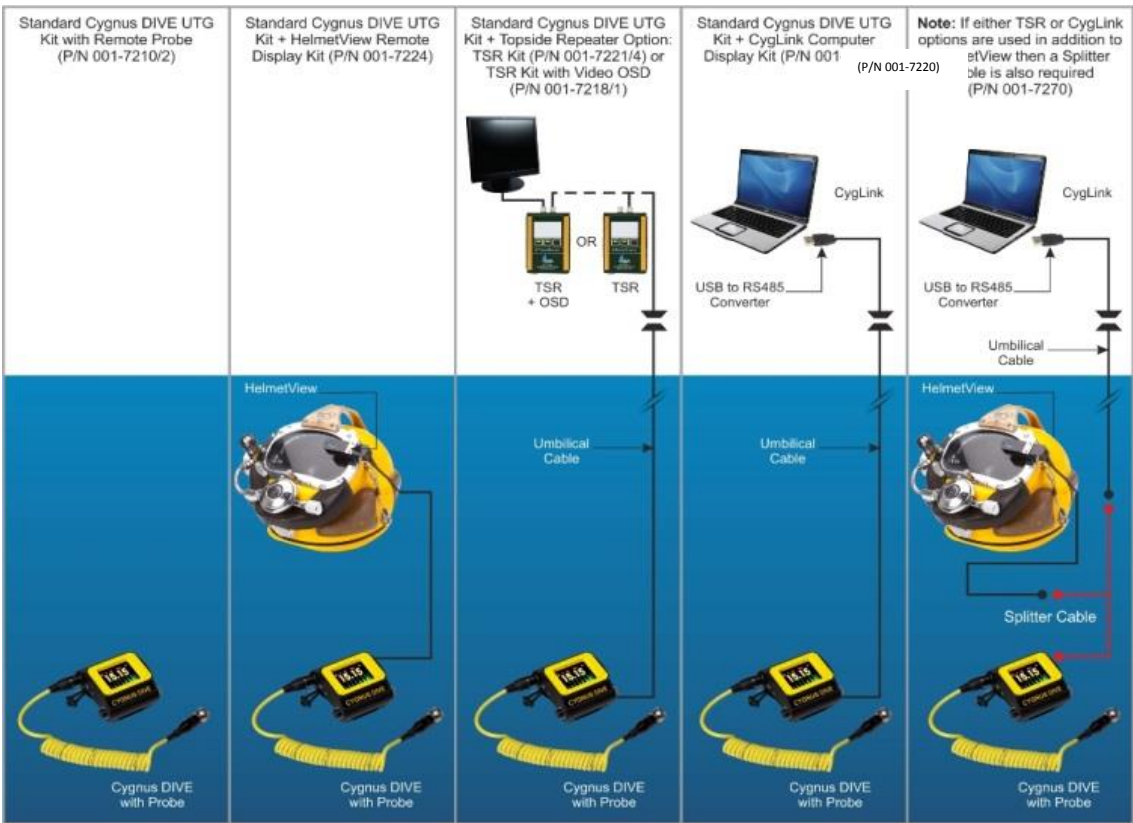
For Spare Leads see page 17 & for Spare Knurled Rings & Membranes page 18



# Cygnus DIVE

## Wrist-Mountable Underwater Thickness Gauge

Designed for the professional diver the Cygnus DIVE, depth rated to 300 metres, is accurate, reliable and easy to use. The Cygnus DIVE is worn on the diver's forearm, availing an invaluable free hand while performing the thickness survey. A large, very bright colour AMOLED display shows the thickness measurements in big numbers along with a live A-scan for verification. Power is supplied by a replaceable, rechargeable, Lithium-Ion battery pack that gives up to 11 hours continuous measurement. The ultrasonic probe is connected by a coiled double jacket cable and rugged locking connector. Now with the option of Single Echo and Echo-Echo Modes for use with a Twin Crystal Probe, ideal for use on extremely heavy corrosion & anchor chain. Single Echo is for use on un-coated surfaces and Echo-Echo for use through paint up to 0.5mm thick. An optional data logging feature is available for storing up to 5000 measurements and A-Scans. CygLink v4. provides surface computer based viewing and data logging. The Topside Repeater unit with Video On-Screen Display option allows the thickness measurements to be overlaid onto the monitor screen / video recording of the survey. HelmetView provides a helmet-mounted remote display of thickness measurements.



### Cygnus DIVE Kits (see next page for Topside Kit options)

Cygnus DIVE Mk2 UTG Kit with S2C 2.25 MHz 13 mm Probe

Kit contents: Cygnus DIVE Ultrasonic Thickness Gauge (UTG), now with bright AMOLED Display, Probe S2C 2.25MHz 13 mm (1/2"), 2 rechargeable batteries, battery charger, screen protector, silicone grease, lanyard, spare membranes, membrane key, membrane couplant, steel test block, ultrasonic couplant, operation manual and carry case.

Cygnus DIVE Mk2 UTG Kit, without Probe

Kit contents: As above but without probe. Please select probe from list below

Cygnus Data Logging DIVE Mk2 UTG Kit with S2C Probe

Kit contents: Cygnus Data Logging DIVE Ultrasonic Thickness Gauge (UTG), now with bright AMOLED display, Probe S2C 2.25MHz 13 mm (1/2"), Cygnus CygLink software on USB flash drive, Cygnus DIVE Data Logger (Fischer) direct to PC (USB) lead, Software enabler key (on USB flash drive), 2 rechargeable batteries, battery charger, screen protector, silicone grease, lanyard, spare membranes, membrane key, membrane couplant, steel test block, ultrasonic couplant, operation manual and carry case.

Cygnus Data Logging DIVE Mk2 UTG Kit, without Probe

Kit contents: As above but without probe. Please select probe from list below

Order Code

001-7210/2

001-7200/2

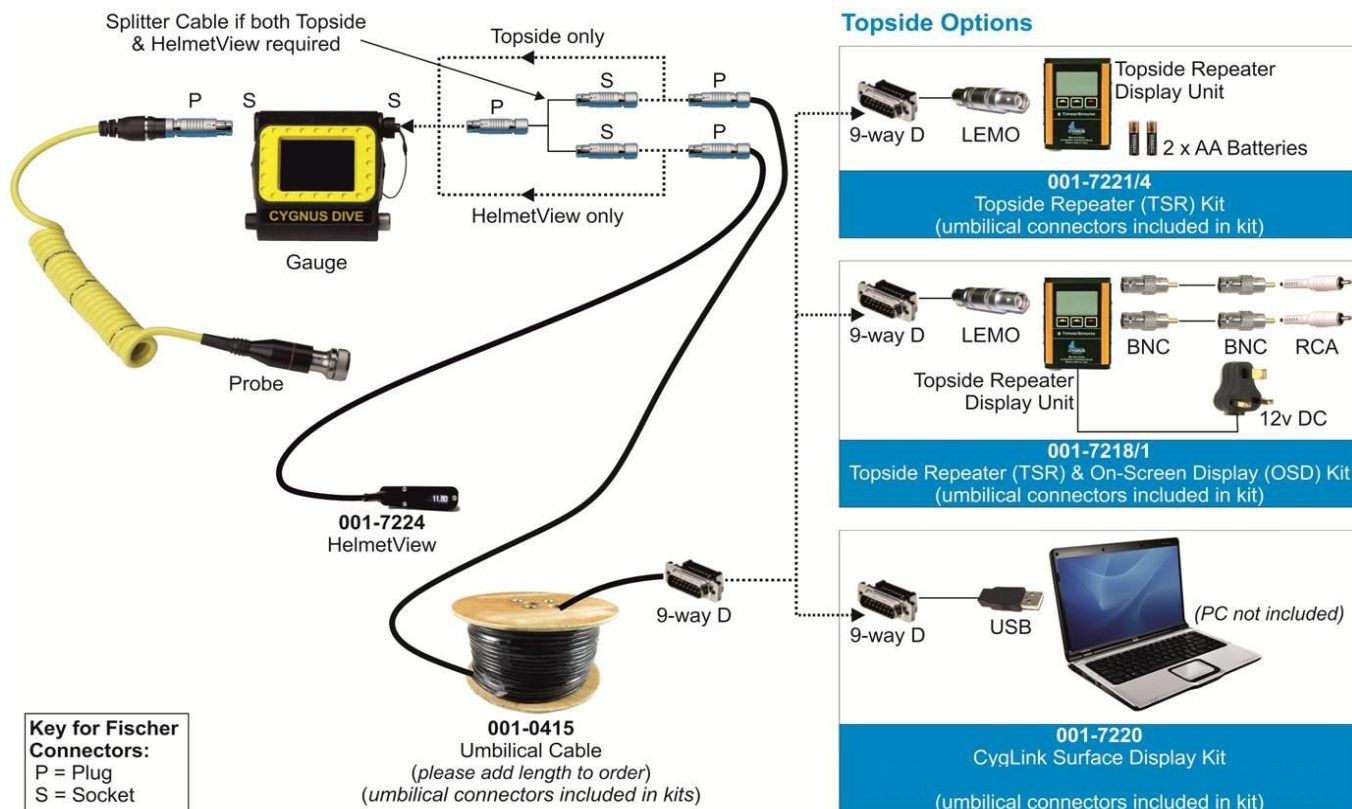
001-7211/2

001-7201/2



# Cygnus DIVE

## Wrist-Mountable Underwater Thickness Gauge



### Surface/Topside Display Options for Cygnus DIVE Mk2 Gauge

Order Code

#### TOPSIDE REPEATER (TSR) Kit for Cygnus DIVE

001-7221/4

Upgrade Kit for Cygnus DIVE, to add Topside Repeater (TSR) Display Unit

*Kit contents: Cygnus Topside Repeater display unit, Silicone sleeve, Umbilical (9-way D) to TSR (Lemo) link lead, Cygnus DIVE (Fischer) to (9-way D) topside umbilical connectors, 2 x AA batteries.*

**Please add to order: Umbilical cable (001-0415) & specify length.**

#### TOPSIDE REPEATER (TSR) Kit with Video OSD for Cygnus DIVE

001-7218/1

Upgrade Kit for Cygnus DIVE, to add Topside Repeater (TSR) Display Unit with Video On-Screen Display (OSD)

*Kit contents: Cygnus Topside Repeater display unit, Silicone sleeve, Umbilical (9-way D) to TSR (Lemo) link lead, Cygnus DIVE (Fischer) to (9-way D) topside umbilical connectors, 2 BNC cables with RCA phono adapters, DC power supply 12 V universal plug-in.*

**Please add to order: Umbilical cable (001-0415) & specify length.**

#### Surface computer logging feature for Cygnus DIVE

001-7220

Upgrade Kit for Cygnus DIVE, to add CygLink Surface Computer Display with Computer Data Logging Facility

*Kit contents: Umbilical (9-way D) to computer (USB) link lead & Cygnus DIVE (Fischer) to (9-way D) topside umbilical connectors*

*CygLink software supplied on a USB*

**Please add to order: Umbilical cable (001-0415) & specify length.**

#### Umbilical cable for DIVE / UW / ROV to Topside (per metre)

001-0415

*supplied with Umbilical (9-way D) to PC (USB) Link Lead for CygLink*





# Cygnus DIVE

## Wrist-Mountable Underwater Thickness Gauge

### **Single Crystal Probes for Cygnus DIVE Gauge (Multiple Echo Mode)**

Order Code

*(All Single Crystal Probes have integral coiled double-jacket cable and rugged locking connector, and are supplied with membrane key and a pack of 20 membranes.)*

Probe S2C Single Crystal 2.25 MHz 13 mm (1/2") for DIVE  
Probe S3C Single Crystal 3.5 MHz 13 mm (1/2") for DIVE  
Probe S5C Single Crystal Probe 5.0 MHz 13 mm (1/2") for DIVE  
Probe S5A Single Crystal 5.0 MHz 6 mm (1/4") for DIVE

001-7230  
001-7231  
001-7232  
001-7233



### **Twin Crystal Probes for Cygnus DIVE Gauge (Single Echo & Echo-Echo Modes)**

Order Code

Probe T5B Twin Crystal 5 MHz 8 mm for Cygnus DIVE Mk2  
Probe T2C Twin Crystal 2 MHz 13 mm for Cygnus DIVE Mk2

001-7235  
001-7236

### **HelmetView for Cygnus DIVE Gauge**

Order Code



HelmetView MK2 Remote Display Kit

001-7224/2

*An OLED display, integrated link lead to Cygnus DIVE (Fischer) and mounting brackets for Kirby Morgan helmets, to display the thickness measurement in front of a diver's lens.*

*(Suitable for use with DIVE Mk1 (orange gauge))*

Splitter Cable for Cygnus DIVE HelmetView & Surface Display

001-7270

*Splitter (Y) cable that enables both HelmetView (Fischer) and an umbilical cable (Fischer) for Topside display options to be connected to the Cygnus DIVE gauge (Fischer).*

### **General Spares for Cygnus DIVE**

Order Code

CygLink Data Logging software upgrade for Cygnus DIVE

001-7219/2

*Upgrade Kit for Cygnus DIVE Ultrasonic Thickness Gauge (UTG), to add Data Logging Facility  
Kit contents: Cygnus CygLink Software on USB Flash Drive, Cygnus DIVE Data Logger to USB Lead  
Software Enabler Key (on USB Flash Drive)*

Cygnus DIVE (Fischer) direct to computer (USB) Link Lead

001-7271

Umbilical (9-way D) to PC (USB) Link Lead for CygLink

001-7262

Umbilical (9-way D) to TSR Display Unit (Lemo) Link Lead

001-0426

Video Cables and Adapters for Topside Repeater with OSD

001-0442

Cygnus DIVE (Fischer)-(9-way D) topside umbilical connectors

001-7260

Cygnus DIVE Battery

001-7250

Battery Charger for Cygnus DIVE (UK Mains Plug)

001-7251-UK

Battery Charger for Cygnus DIVE (EU Mains Plug)

001-7251-EU

Battery Charger for Cygnus DIVE (US Mains Plug)

001-7251-US

Screen Protector for Cygnus DIVE

001-7263

Replacement Lanyard for Cygnus DIVE

001-7257

Operation Manual for Cygnus DIVE on USB Flash Drive

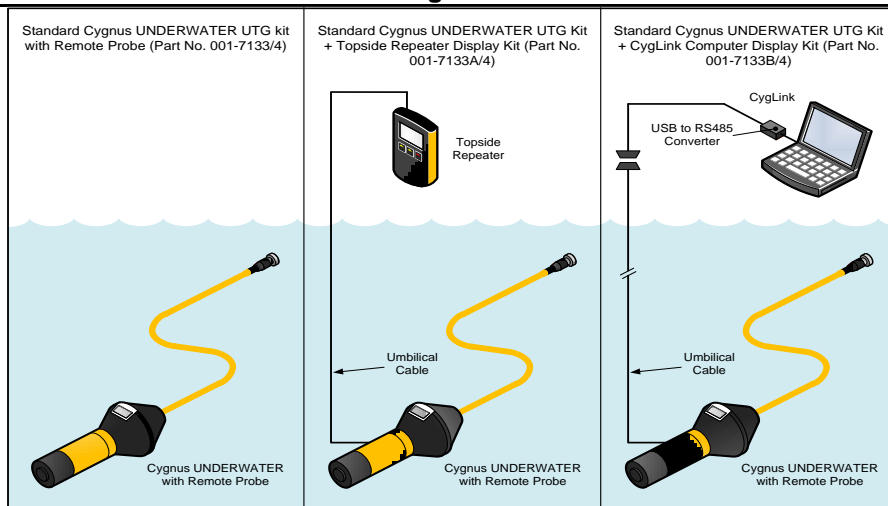
001-7256

*For Spare Leads see page 17 & for Spare Knurled Rings & Membranes page 18*



# Cygnus UNDERWATER

## Diver-Held Underwater Thickness Gauge



A tough underwater Ultrasonic Thickness Gauge (UTG) using our Multiple Echo technology, designed for divers undertaking subsea surveys. Pressure tested to 300 m depth and supplied ready to use as a complete kit in a protective carry case with 2 rechargeable batteries.

### Cygnus UNDERWATER Kits

Cygnus UNDERWATER UTG Upgradeable Kit inc 2.25MHz 13mm Probe

*Kit contents: Cygnus UNDERWATER Ultrasonic Thickness Gauge (UTG), 2 rechargeable batteries, S2C Probe 2.25 MHz 13 mm (1/2"), torque bar, 20 membranes, membrane key, membrane couplant, steel test block, ultrasonic couplant, lanyard, battery charger, calibration jumper lead, silicone (Molykote) grease, spare 'O'-rings, operation manual and carry case.*

Cygnus UNDERWATER UTG Upgradeable Kit, without Probe

*Kit contents: As above but without probe. Please select probe from list below*

### Probes for Cygnus UNDERWATER Gauges

*(All Probes are supplied as nose cone assembly with 1 m cable, and with torque bar, 20 membranes and membrane key.)*

Probe S2C 2.25MHz 13mm(1/2") for Cygnus Underwater/MINI ROV

Probe S2D 2.25MHz 19mm(3/4") for Cygnus Underwater

Probe S3C 3.5MHz 13mm(1/2") for Cygnus Underwater

Probe S5C 5.0MHz 13mm(1/2") for Cygnus Underwater

Probe S5A 5.0MHz 6mm(1/4") for Cygnus Underwater

Fixed Head Probe 2.25MHz 13mm (1/2") for Cygnus Underwater

### Surface/Topside Display Options for Cygnus UNDERWATER Gauge

Upgrade Kit 'A' (TSR) for Cygnus UNDERWATER

*Kit contents: Cygnus Topside Repeater (TSR) display unit, 2 AA batteries, silicone sleeve, Cygnus UNDERWATER (4-way Impulse) to TSR (Lemo 1) data connection.*

*(Please add to order: Cygnus UNDERWATER Umbilical cable (001-0415) and specify length.)*

Upgrade Kit 'B' (CygLink) for Cygnus UNDERWATER

*Kit contents: CygLink Software, Cygnus UNDERWATER (4-way Impulse) to Topside (9-way D RS422) data connection, Isolated data converter (RS422/RS485 to USB).*

*(Please add to order: Cygnus UNDERWATER Umbilical cable (001-0415) and specify length.)*

Umbilical cable for DIVE / UW / ROV to Topside (per metre)

*supplied with Umbilical (9-way D) to PC (USB) Link Lead for CygLink*

### General Spares for Cygnus UNDERWATER (UW)

Battery for Cygnus UNDERWATER Gauges Mk 3/4

Battery Charger for Cygnus UW / IS Mk 3/4 (UK Mains Plug)

Battery Charger for Cygnus UW / IS Mk 3/4 (US Mains Plug)

Battery Charger for Cygnus UW / IS Mk 3/4 (EU Mains Plug)

Calibration Jumper Lead for Cygnus 1 IS, UW & HD Gauges

'O' Ring Pack for Cygnus UNDERWATER Gauge

*Kit contents: 20 x 'O'-ring type A, 40 x 'O'-ring type B and 20 x 'O'-ring type C.*

Spares Kit for Cygnus UNDERWATER Gauge

*Kit contents: 'O'-rings (3 types: 20 x A; 40 x B; 20 x C), silicone (Molykote) grease, 20 polyurethane membranes & 1 membrane key for each probe size (6 mm, 13 mm & 19 mm) and membrane couplant.*

Impulse Connector 4-Way with Flying Lead

Impulse Connector 4-Way Blanking Plug

Isolated Data Converter (RS422/RS485 to USB)

CygLink Software and Underwater Gauge Manual on USB stick

Topside Interface Cable A (Lemo socket) to B (9-way D plug)

Topside Interface Cable B (9-way D socket) to A (Lemo plug)

*For Spare Leads see page 17 & for Spare Knurled Rings & Membranes page 18*

Order Code

001-7133/4



001-9933/4

Order Code

001-9340

001-9341

001-9357

001-9342

001-9343

001-9320



Order Code

001-7133A



001-7133B



001-0415

Order Code

001-1504

001-1514

001-1515

001-1516

001-0410

001-3711

001-3715

001-0418

001-0419

001-8305

001-8210

001-0416

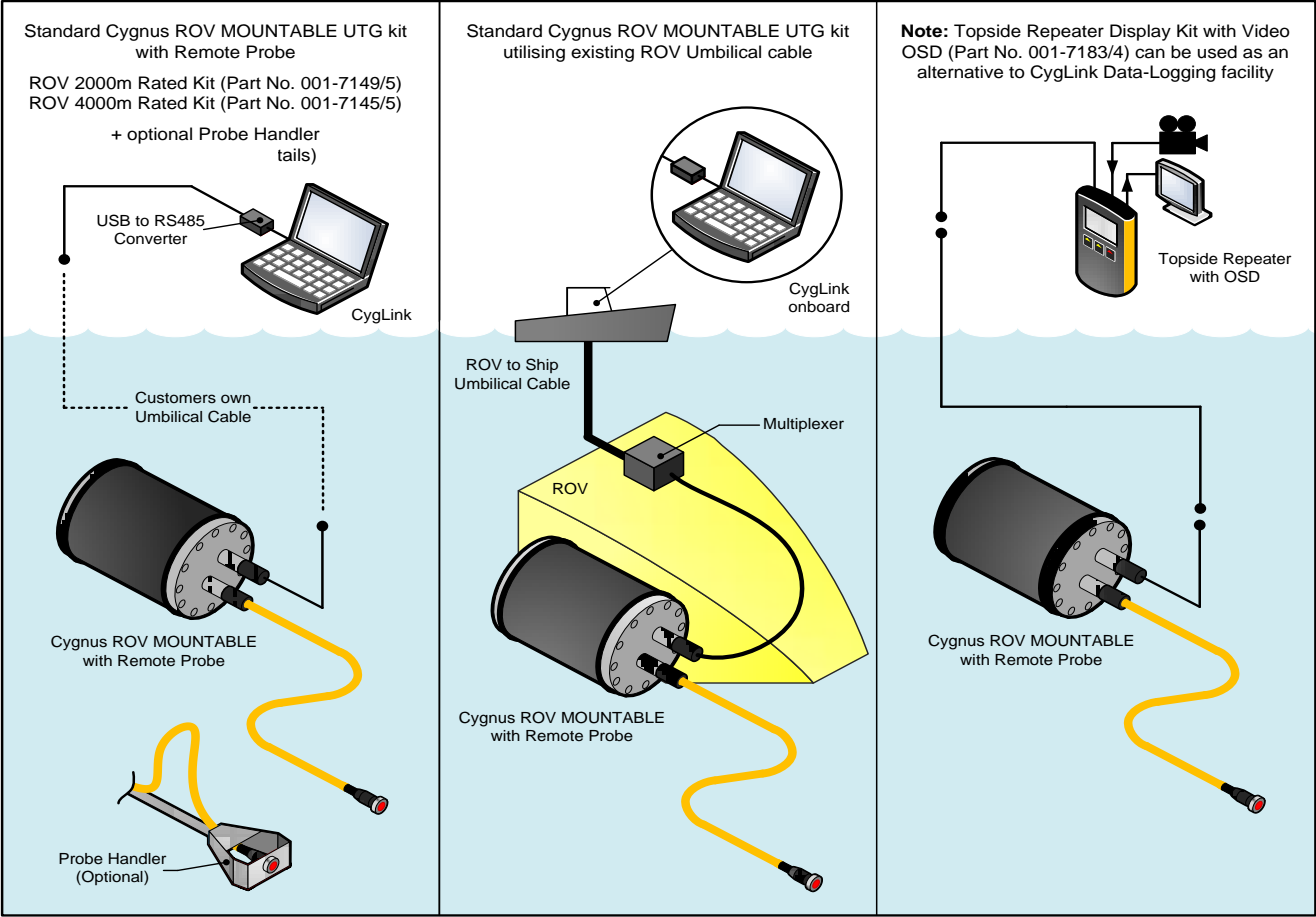
001-0417



# Cygnus ROV MOUNTABLE 2/4 km

## Multiple Echo Ultrasonic Thickness Gauges

Available in 2000 m and 4000 m depth rated housings, these units are truly versatile and designed to operate in the harshest deepsea operating conditions. Dedicated software displays the time, date and thickness measurements on the surface which can be stored or logged. Alternatively, an optional Topside Repeater is available which has the facility to display readings remotely and overlay them onto a video signal which allows the measurements to be superimposed on the ROV camera's monitor screen.



### Cygnus ROV MOUNTABLE 2000 m / 4000 m Kits

Cygnus M5-ROV-2K 2000m ROV UTG Kit with 2.25MHz 13mm Probe

Kit contents: Cygnus ROV MOUNTABLE 2000 m Ultrasonic Thickness Gauge (UTG), S2C Probe 2.25 MHz 13 mm (1/2") with 5 m cable, power and data test cable, gauge (Subconn) to umbilical (flying) lead, 9-way D connector, 'K3' RS422 to RS232 converter, RS232 to USB serial interface cable, CygLink data logging software, spare 1A fuses, 3 mm allen key, silicone grease, spare 'O'-rings, 20 membranes, membrane key, membrane couplant, steel test block, ultrasonic couplant, operation manual and carry case.

Cygnus M5-ROV-2K 2000m ROV UTG Kit, without Probe

Kit contents: As above but without probe. Please select probe from list below

Cygnus M5-ROV-4K 4000m ROV UTG Kit with 2.25MHz 13mm Probe

Kit contents: Cygnus ROV MOUNTABLE 4000 m Ultrasonic Thickness Gauge (UTG), S2C Probe 2.25 MHz 13 mm (1/2") with 5 m cable, power and data test cable, gauge (Subconn) to umbilical (flying) lead, 9-way D connector, 'K3' RS422 to RS232 converter, RS422/RS485 to USB converter, CygLink data logging software, spare 1A fuses, 3 mm allen key, silicone grease, spare 'O'-rings, 20 membranes, membrane key, membrane couplant, steel test block, ultrasonic couplant, operation manual and carry case.

Cygnus M5-ROV-4K 4000m ROV UTG Kit, without Probe

Kit contents: As above but without probe. Please select probe from list below

Order Code

001-7149/5

001-9949/5

001-7145/5

001-9945/5



### Probes for Cygnus ROV MOUNTABLE 2000 m / 4000 m Gauges

(All Probes are supplied with 5 m cable (unless otherwise customised) and with 20 membranes and membrane key.)

Probe S2C 2.25MHz 13mm for Cygnus ROV 2/4km (5m cable)

Probe S2C 2.25MHz 13mm for Cygnus ROV 2/4km (cust length)

Probe S2D 2.25MHz 19mm for Cygnus ROV 2/4km (5m cable)

For Probes to fit Cygnus ROV Probe Handlers see next page

Order Code

001-9393

001-9394

001-9395





# Cygnus ROV MOUNTABLE 2/4 km

## Multiple Echo Ultrasonic Thickness Gauges

### Surface/Topside Display Option for Cygnus ROV MOUNTABLE Gauges

Order Code

TOPSIDE REPEATER Kit with Video OSD for Cygnus ROV 2/4km

001-7183/4

Kit contents: Cygnus Topside Repeater (TSR) display unit with on-screen display facility, Silicone sleeve, TSR (Lemo) to Umbilical (flying tails) link lead, 2 BNC video leads with RCA phono connectors, DC power supply 12 V with universal plug-in.

(On-screen video overlay is suitable for connecting into composite video feeds, PAL or NTSC.)



### Cygnus ROV Probe Handlers

Order Code

Cygnus G1 Inspection ROV PROBE HANDLER, without Probe

001-8351



Cygnus S1 Hull Inspection ROV PROBE HANDLER, without Probe

001-8331



Cygnus W1 Work Class ROV PROBE HANDLER, less Probe & Handle

001-8311

Fishtail Manipulator Handle for Cygnus W1 PROBE HANDLER

001-8316

3/4" T-Bar Manipulator Handle for Cygnus W1 PROBE HANDLER

001-8314

1/2" T-Bar Manipulator Handle for Cygnus W1 PROBE HANDLER

001-8315



### Probes for Cygnus ROV Probe Handlers

Order Code

Probe S2C 2.25MHz 13mm for W1 & ROV MOUNTABLE 2/4km 5m Cable

001-8318

Probe S2C 2.25MHz 13mm for G1 & ROV MOUNTABLE 2/4km 1m Cable

001-8355

Probe S2C 2.25MHz 13mm for S1 & ROV MOUNTABLE 2/4km 1m Cable

001-8335

### General Spares for Cygnus ROV MOUNTABLE 2000 m / 4000 m Gauges

Order Code

RS232 to USB Serial interface cable

003-0422

Isolated Data Converter RS422 to RS232 Model 'K3'

001-8308

CygLink Topside Data Logging Software for Cygnus M5-ROV

003-8213

Video Cables and Adapters for Topside Repeater with OSD

001-0442

Power & Data Connector for M5-ROV with flying lead

001-0431

Data Test & Power Cable RS232/422 for use with M5-ROV's

001-0439

Umbilical cable connectors for Mk5 ROV Mountable

001-7185

Spares kit for Cygnus ROV Mountable 2000m/4000m Gauges

001-3719



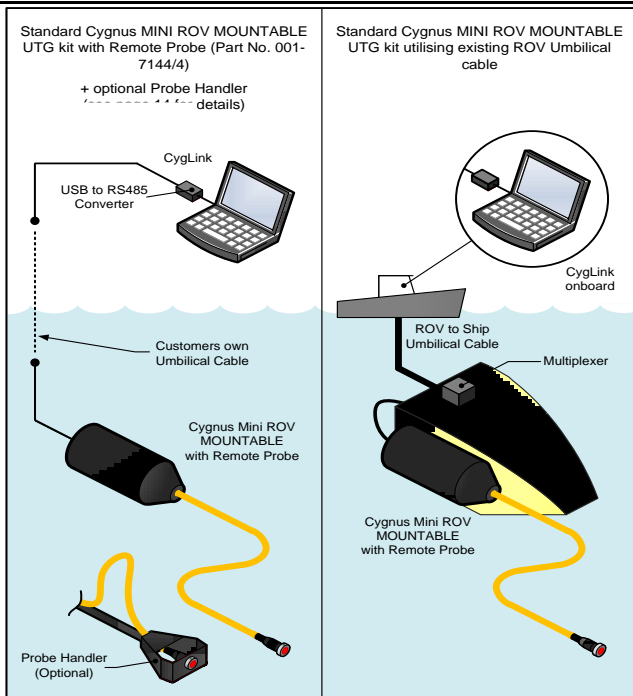
For Spare Leads see page 17 & for Spare Knurled Rings & Membranes page 18

For Probes for Cygnus ROV Mountable 1000 m / 3000 m Gauges see Probes for Cygnus Supported Products page 20-21



# Cygnus MINI ROV MOUNTABLE

## Multiple Echo Ultrasonic Thickness Gauge



The Cygnus MINI ROV Mountable ultrasonic thickness gauge (UTG) is designed to be mounted onto small, observation ROVs, with or without a manipulator facility. Dedicated software displays the time, date and thickness readings on the surface which can all be logged. Alternatively, an optional Topside Repeater (TSR) display unit is available, which has the facility to display measurements remotely and overlay them onto a video signal. Therefore measurements can be superimposed on the ROV camera's monitor screen.

### Cygnus MINI ROV Mountable Kits (Pressure tested to 500 m)

Cygnus MINI 500m ROV UTG Kit with 2.25 MHz 13 mm Probe

Kit contents: Cygnus MINI ROV Mountable Ultrasonic Thickness Gauge (UTG), S2C Probe 2.25 MHz 13 mm (1/2") with 1 m cable, power and data test cable, gauge (4-way 'Impulse' connector) to umbilical (flying) lead, 'Impulse' blanking plug, 9-way D connector, K3' RS422 to RS232 converter, RS232 to USB Serial interface cable, CygLink data logging software, silicone grease, spare 'O'-rings, torque bar, 20 membranes, membrane key, membrane couplant, steel test block, ultrasonic couplant, operation manual and carry case.

Order Code

001-7144/4

Cygnus MINI ROV 500m UTG Kit, without Probe

Kit contents: As above but without probe. Please select probe from list below

001-9944/4

### Probes for Cygnus MINI ROV Mountable Gauge

(All Probes are supplied as nose cone assembly with 1 m cable, and with torque bar, 20 membranes and membrane key.)

Probe S2C 2.25MHz 13mm(1/2") for Cygnus Underwater/MINI ROV

Probe S2D 2.25MHz 19mm for Cygnus MINI ROV MOUNTABLE

001-9340

003-9410

### Cygnus ROV Probe Handlers and Probes

Cygnus G1 Inspection ROV PROBE HANDLER, without Probe

Probe S2C 2.25MHz 13mm for G1 & MINI ROV (1m cable)

Cygnus S1 Hull Inspection ROV PROBE HANDLER, without Probe

Probe S2C 2.25MHz 13mm for S1 & MINI ROV (1m cable)

Order Code

001-8351

001-8354

001-8331

001-8334

### Surface/Topside Display Option for Cygnus MINI ROV Mountable Gauge

TOPSIDE REPEATER Kit with Video OSD for Cygnus MINI ROV

Kit contents: Cygnus Topside Repeater (TSR) display unit with on-screen display facility, Silicone sleeve, Umbilical (9-way D) to TSR (Lemo) link lead, 2 BNC video leads with RCA phono connectors, DC power supply 12 V with universal plug-in.

(On-screen video overlay is suitable for connecting into composite video feeds, PAL or NTSC.)

Order Code

001-7153/4

### VideoRay Fittings for Cygnus MINI ROV Mountable Gauge

Videoray Mounting Brackets for Cygnus MINI ROV incl fittings

Videoray Connection Cable (4-way Impulse to 9-way SubConn)

Order Code

001-8307

001-0433

### General Spares for Cygnus MINI ROV Mountable Gauge

'O' Ring Pack for Cygnus MINI /1km /3km ROV Mountable Gauges

Kit contents: 20 x 'O'-ring type A and 20 x 'O'-ring type B.

RS232 to USB Serial interface cable

Isolated Data Converter RS422 to RS232 Model 'K3'

CygLink Software & manual on USB for MINI ROV

Impulse Connector 4-Way Blanking Plug

Video Cables and Adapters for Topside Repeater with OSD

Umbilical cable connectors for MINI ROV Mountable Gauge

Order Code

001-3712

003-0422

001-8308

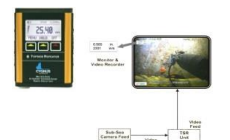
001-8333

001-0419

001-0442

001-7154




For Spare Leads see page 17 & for Spare Knurled Rings & Membranes page 18



# Cygnus Probes




for use with Cygnus Ultrasonic Thickness Gauges

Single Crystal Probes for use with gauges in Multiple Echo Mode:

Probe Type	Band Colour	Frequency	Crystal Size $\varnothing$	Measuring Range in Steel	Probe Connectors	
S2C	Red	2.25 MHz	13mm / 0.512"	3 - 250mm / 0.118" - 9.842"	BNC	
S3C	Orange	3.5MHz	13mm / 0.512"	2 - 150mm / 0.078" - 5.905"		
S5C	Black	5.0 MHz	13mm / 0.512"	1 - 50mm / 0.039" - 1.968"		
S5A	Black	5.0 MHz	6mm / 0.236"	1 - 50mm / 0.039" - 1.968"	Lemo 00	
S2D	Red	2.25 MHz	19mm / 0.748"	3 - 250mm / 0.118" - 9.842"	BNC	

Suitable for surface temperatures up to 75°C (167°F) with standard membranes & 150°C (302°F) with Teflon membranes, please see page 19 for membrane details

Twin Crystal Probes for use in Echo-Echo & Single Echo Modes:

Probe Type	Frequency	Crystal Size $\varnothing$	Measuring Range in Steel in Single Echo	Measuring Range in Steel in Echo-Echo	Probe connectors	
T2C	2MHz	13mm / 0.512"	2.5 - 200mm 0.12 - 8"	5 - 50mm 0.2 - 2"	Twin Lemo 00	
T5B	5 MHz	8mm / 0.315"	1.5 - 150mm 0.08 - 6"	4 - 50mm 0.16 - 2"	Twin Lemo 00	
T7A	7.5MHz	5mm / 0.197"	0.8 - 50mm 0.04 - 2"	3 - 25mm 0.12 - 1"	Integral cable	

Suitable for use on surface temperatures up to 60°C (140°F)

Probe Type reference key:

First Letter Single or Twin Crystal	Middle Number Frequency in MHz	Last Letter Crystal Size $\varnothing$
S = Single T = Twin	2 = 2 MHz / 2.25 MHz 3 = 3.5 MHz 5 = 5 MHz	A = 6mm / 0.236" B = 8mm / 0.314" C = 13mm / 0.512" D = 19mm / 0.748"





# Cygnus Probe Leads

for use with Cygnus Ultrasonic Thickness Gauges

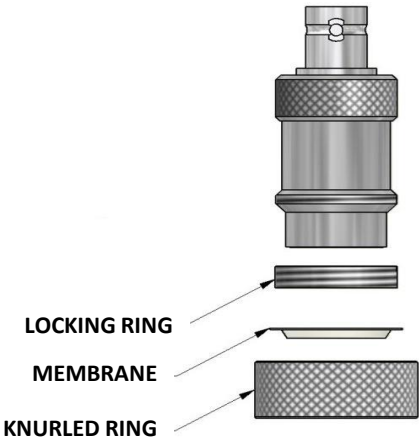
  			 	
  				

<b><i>Leads for use with Cygnus 2 &amp; 4 Mk5 &amp; Cygnus 3 Mk4 Gauges</i></b>	<i>Order Code</i>
Probe Lead Lemo 1 - BNC 1.4m (4'6")	004-0406
Probe Lead Twin Lemo 00 to BNC 1.35m (4'6")	004-0410
Probe Lead Single Lemo 1 - Single Lemo 00 1.35 m (4'6")	004-0401
Probe Lead : RG58 Lemo 1S to BNC 1.35m (4'6")	004-0405
<b><i>Leads for use with Cygnus 2+ &amp; 4+ Mk5 Gauges</i></b>	<i>Order Code</i>
Probe Lead Twin Lemo 00 to Twin Lemo 00 1.35m (4'6")	004-0411
Probe Lead Twin Lemo 00 to BNC 1.35m (4'6")	004-0410
Probe Lead Twin Lemo 00 to Single Lemo 00 1.4m (4'6")	004-0412

# Cygnus Spare Membranes & Knurled Rings

for use with Cygnus Single-Crystal Ultrasonic Probes

All Cygnus single-crystal probes are constructed from stainless steel and incorporate a replaceable wear membrane to protect the probe face. The performance of the probe depends on the condition of the membrane and how well it has been fitted. Please refer to your Operation Manual for guidelines on changing the protective membrane on Cygnus Probes.



Important note: the actual Membrane Diameter is larger than the "Probe Size" that it is designed to fit. The "Probe Size" is defined by the diameter of the black part of the Probe Face. Please order membranes according to "Probe Size" as per the below table:

Probe size	Size of head including Knurled Ring (approx.)	Physical size of membrane (approx.)
6mm	18mm	14mm
13mm	24mm	21mm
19mm	30mm	28.5mm

## Standard Membranes

(Standard membranes are made of polyurethane and are suitable for surface temperatures up to 75°C (167°F). Available in packs of 20.)

	Order Code	Membrane Diameter	To fit "Probe Size"
Pack of 20 Polyurethane Membranes for 19 mm (3/4") Probes	001-3700	21 mm	19 mm Probe
Pack of 20 Polyurethane Membranes for 13 mm (1/2") Probes	001-3701	19 mm	13 mm Probe
Pack of 20 Polyurethane Membranes for 6 mm (1/4") Probes	001-3702	13 mm	6 mm Probe

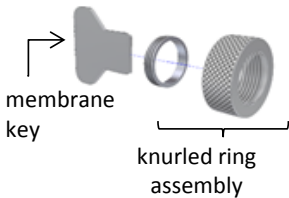
## Higher Temperature Membranes

(Higher temperature membranes are made of Teflon and are suitable for surface temperatures up to 150°C (302°F), with a maximum contact time of 5 seconds. Available in packs of 10.)

	Order Code	Membrane Diameter	Probe Size
Pack of 10 Teflon Membranes for 19 mm (3/4") Probes	001-4875	21 mm	19 mm Probe
Pack of 10 Teflon Membranes for 13 mm (1/2") Probes	001-4874	19 mm	13 mm Probe
Pack of 10 Teflon Membranes for 6 mm (1/4") Probes	001-4873	13 mm	6 mm Probe

## Knurled Rings and Membrane (or Locking Ring) Keys

	Order Code
Knurled Ring Assembly for 19 mm (3/4") Probes	001-3705
Knurled Ring Assembly for 13 mm (1/2") INOX Probes	001-3709
Knurled Ring Assembly for 13 mm (1/2") Probes	001-3704
Knurled Ring Assembly for 6 mm (1/4") Probes	001-3703
Membrane Key for 19 mm (3/4") Probes	001-2610
Membrane Key for 13 mm (1/2") Probes	001-2611
Membrane Key for 6 mm (1/4") Probes	001-2612



# Cygnus Accessories

## Couplant

	Order Code
UCA-2M UT Couplant Gel (1 litre tub)	001-3707
UCA-2M UT Couplant Gel (100 ml)	001-3708
Membrane Couplant 25 ml bottle	001-3706



Membrane  
couplant

## Grease for use with UNDERWATER & DIVE Gauges

Silicone Grease (50g Tube)	001-4861
----------------------------	----------

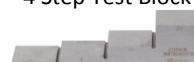
## Test Blocks

	Order Code
Steel Test Block 15 mm	001-4850
Steel Test Block 1/2"	001-4851
Stainless Steel Test Block 15 mm	001-4854
Aluminium Test Block 15 mm	001-4857
3 Area Coated Test Block (Non discountable item)	001-4887
4 Step Steel Test Block, metric 2.5 - 20mm (Non discountable item)	001-4858
4 Step Steel Test Block, imperial 0.1 - 0.75 inch (Non discountable item)	001-4859
4 Step Steel Calibration Block, metric 2.5 - 20mm (Non discountable item) Traceable calibration certificate supplied	001-4876
4 Step Steel Calibration Block, imperial 0.1 - 0.75 inch (Non discountable item) Traceable calibration certificate supplied	001-4877
Carbon Steel Step Block 5-25 mm in 5 mm steps set in perspex (Supplied with dimensional and material type certificate.)	001-4856

3 Area Coated Test Block



4 Step Test Block



Carbon Steel  
Step Block &  
15mm Test  
Blocks

## Pit Gauges

	Order Code
Cygnus MECHANICAL PIT GAUGE (Measurement Range: 0 to 43 mm)	111-7165



Pit Gauge

## Surface Preparation Accessories

Chipping/Boiler Scaling Hammer 1lb Ash Handle	500-0100
Carbide Edged Power Scraper	500-0101
Steel Wire Brush & Scraper	500-0102



Brush &  
Scraper



Hammer

## Cygnus Manuals

Cygnus Gauge manuals are available to download from the support section of our website,  
if the manual you require is not available for any reason please contact us on  
sales@cygnus-instruments.com and we will be happy to email it.  
Paper copies are available for £8.00 plus carriage





# Probes for Cygnus Supported Products

for use with Cygnus Ultrasonic Thickness Gauges

## **Probes for Cygnus 2, 3 & 4 Mk 4**

Order Code

Probe S2C 2.25 MHz 13 mm (1/2") with BNC - Lemo 1 cable	004-9310
Probe S2D 2.25 MHz 19mm (3/4") with BNC - Lemo 1 cable	004-9311
Probe S3C 3.5 MHz 13 mm (1/2") with BNC - Lemo 1 cable	004-9313
Probe S5A 5.0 MHz 6 mm (1/4") with Lemo 00 - Lemo 1 cable	004-9314
Probe S5C 5.0 MHz 13 mm (1/2") with BNC - Lemo 1 cable	004-9316

## **Probes for Cygnus 2, 3 & 4 Mk 2/3**

Order Code

Probe 2.25MHz 13mm 1/2" BNC (Probe) - Lemo 00 (Gauge)	002-9306
Probe 2.25MHz 13mm 1/2" Lemo 00(Probe)-Lemo 00(Gauge)	001-9300
Probe 2.25MHz 19mm 3/4" BNC (Probe) - Lemo 00 (Gauge)	001-9304
Probe S3C 3.5MHz 13mm 1/2" Lemo 00Lemo 00	001-9350
Probe 5MHz 6mm 1/4" Lemo 00 (Probe) - Lemo 00 (Gauge)	001-9308
Probe 5MHz 13mm 1/2" BNC (Probe) - Lemo 00 (Gauge)	002-9317
Probe 5MHz 13mm 1/2" Lemo 00 (Probe) - Lemo 00(Gauge)	001-9305

## **Probe Leads for Cygnus 2, 3 & 4 Mk 2/3**

Order Code

Probe Lead : RG58 Lemo 00 to BNC (length 1.35m, 4'6")	001-0402
Probe Lead : RG58 Lemo 00 to Lemo 00 (length 1.35m, 4'6")	001-0400
Probe Lead : RG58 BNC to BNC (length 1.35m, 4'6")	002-0404
Probe Lead : RG58 (+ Choke) Lemo 00 to Lemo 00 (1.35m, 4'6")	001-0436

(For use with Cygnus SE Gauge only)

## **Probes for Cygnus 2 & 3 Mk 1**

Order Code

Probe 2.25MHz 13mm 1/2" BNC (Probe) - BNC (Gauge)	002-9302
Probe 2.25MHz 13mm 1/2" Lemo 00 (Probe) - BNC (Gauge)	002-9318
Probe 2.25MHz 19mm 3/4" BNC (Probe) - BNC (Gauge)	002-9303
Probe 3.5MHz 13mm 1/2" S3C BNC (Probe) - BNC (Gauge)	002-9351
Probe 5MHz 6mm 1/4" Lemo 00 (Probe) - BNC (Gauge)	002-9309
Probe 5MHz 13mm 1/2" BNC (Probe) - BNC (Gauge)	002-9307

## **Marinised (underwater) Probes for Cygnus 2, 3 & 4 Mk 2/3**

Order Code

(Please add Marinised Cable length as required for all Marinised Probe orders. Cable includes a Lemo 1 connector to connect with the gauge)

Marinised Probe 2.25MHz 13mm 1/2" - Cyg 2,3,4 Lemo 00,no cable	001-9378
Marinised Probe 2.25MHz 19mm 3/4" Cyg 2,3,4 Lemo 00 no cable	001-9377
Marinised Probe 3.5MHz 13mm 1/2" - Cyg 2,3,4 Lemo 00, no cable	001-9379
Marinised Probe 5.0MHz 6mm 1/4" - Cyg 2,3,4 Lemo 00, no cable	001-9381
Marinised Probe 5.0MHz 13mm 1/2" - Cyg 2,3,4 Lemo 00, no cable	001-9380
Cable Standard Marinised Underwater priced per metre	001-0434

(50m max. length for "S2-" (2.25MHz) probes, for other frequencies please contact Cygnus)

## **Probes for Cygnus Intrinsically Safe Mk 1/2 up to S/N 3231**

Order Code

Probe 2.25MHz 13mm (1/2") for Cygnus 1 IS (Mk1,2)	001-9325
Probe 2.25MHz 19mm (3/4") for Cygnus 1 IS (Mk1,2)	001-9324
Probe 3.5MHz 13mm (1/2") for Cygnus 1 IS (Mk1,2)	001-9326
Probe 5.0MHz 6mm (1/4") for Cygnus 1 IS (Mk1,2)	001-9329
Probe 5.0MHz 13mm (1/2") for Cygnus 1 IS (Mk1,2)	001-9327
Right Angle Probe 2.25MHz 13mm(1/2") for Cygnus 1 IS (Mk1,2)	001-9372
Right Angle Probe 3.5MHz 13mm (1/2") for Cygnus 1 IS (Mk1,2)	001-9374
Right Angle Probe 5.0MHz 6mm (1/4") for Cygnus 1 IS (Mk1,2)	001-9375
Right Angle Probe 5.0MHz 13mm (1/2") for Cygnus 1 IS (Mk1,2)	001-9376



# Spare Parts for Cygnus Products

(continued)

for use with Cygnus Ultrasonic Thickness Gauges (Current & Supported)

## ***Gauge Bodies (latest electronics available only)***

*Order Code*

Cygnus 2 HANDS FREE Mk5 Gauge Body only	050-2011/5
Cygnus 2+ HANDS FREE Mk5 Gauge Body only	050-2015/5
Cygnus 2 HANDS FREE Mk4 Gauge Body only	002-7173/4
Cygnus 3 DATA LOGGER Gauge Body only	003-7177/4
Cygnus 4 GENERAL PURPOSE Mk5 Gauge Body only	050-4011/5
Cygnus 4+ GENERAL PURPOSE Mk5 Gauge Body only	050-4015/5
Cygnus 6+ PRO Mk5 Gauge body only	050-6011/5
Cygnus 4 GENERAL PURPOSE Gauge Mk4 Body only	004-7182/4
Cygnus 1 INTRINSICALLY SAFE CSA Gauge Body only	001-7171-CSA/3
Cygnus 1 INTRINSICALLY SAFE ATEX Gauge Body only	001-7171-ATEX/3
Cygnus DIVE Underwater Thickness Gauge Mk2 Body only	001-7255/2
Cygnus DATA LOGGING DIVE UW Thickness Gauge Mk2 Body only	001-7259/2
Cygnus UNDERWATER Gauge Body only with TOPSIDE Connector	001-7179/4
Cygnus TOPSIDE REPEATER (Instrument Body)	001-7181/4
Cygnus HEAVY DUTY Gauge Body only	001-7170/4
Cygnus ROV Mountable 2000m UTG Gauge Body only	001-7189/5
Cygnus ROV Mountable 4000m UTG Gauge Body	001-7191/5
Cygnus MINI ROV Mountable UTG Gauge Body	001-7190/4

## ***Carry cases, pouches, sleeves, slings & straps (Supported & Current products)***

*Order Code*

### ***for Surface Thickness Gauges***

Soft Carry Case + foam for C2, 2+,4,4+,6+ Mk5 Gauge Kits	050-0105
2x fixings for neck strap for Cygnus 2,2+,4,4+,6+ Mk5 Gauges	050-0116
Soft Carry case + foam for Cygnus 2, 3, 4 Mk4 Gauges	002-4838
Silicone Sleeve for Cygnus 2 HANDS FREE Mk4 Gauge	002-4835
Silicone Sleeve for Cygnus 4 GENERAL PURPOSE Mk4 or TSR	004-4835
Belt Clip for Silicone Sleeve for Cygnus 2/3/4 Mk4 Gauges	002-4836/4
Neck strap for use with Cygnus 2/3/4 Mk4	002-4841
Cygnus 2/3 Mk3 Leather Case	002-4817
Leather Case for Cygnus 4 Mk 3	004-4804
Carry Case for Cygnus 4 Mk3/SE	004-4823
Fabric Accessories Pouch	002-4837/4
Hard Carry Case for Cygnus 1 IS and HD Gauge Kits	001-4800
Peli Carry Case for Cygnus 2, 2+ & 4 Mk5 Gauge Kit	050-4010/5
Peli Carry Case for Cygnus 4+ Mk5 Gauge Kit	050-4511/5
Peli Carry Case for Cygnus 6+ Mk5 Gauge Kit	050-6511/5

### ***for Subsea Thickness Gauges***

Peli Carry Case for Cygnus DIVE MK2 (Yellow)	001-7252/2
Peli Carry Case for Cygnus Underwater Gauge Kit (Yellow)	001-4813-UW
Peli Carry Case for Cygnus ROV Gauge Kit (Yellow)	001-4813-ROV

### ***for Hatch Sure***

Ruck Sack Soft Carry Case for Hatch Sure Kit	006-1009
Protective Pouch with Sling for Hatch Sure Transmitter	006-1011
Protective Pouch for Hatch Sure Receiver	006-1014
Waist Strap for Hatch Sure Receiver	006-1015

### ***for Sonaphone***

Leather Instrument Case with Shoulder Strap for Sonaphone	009-7408
---	----------

## ***Additional Cable***

*Order Code*

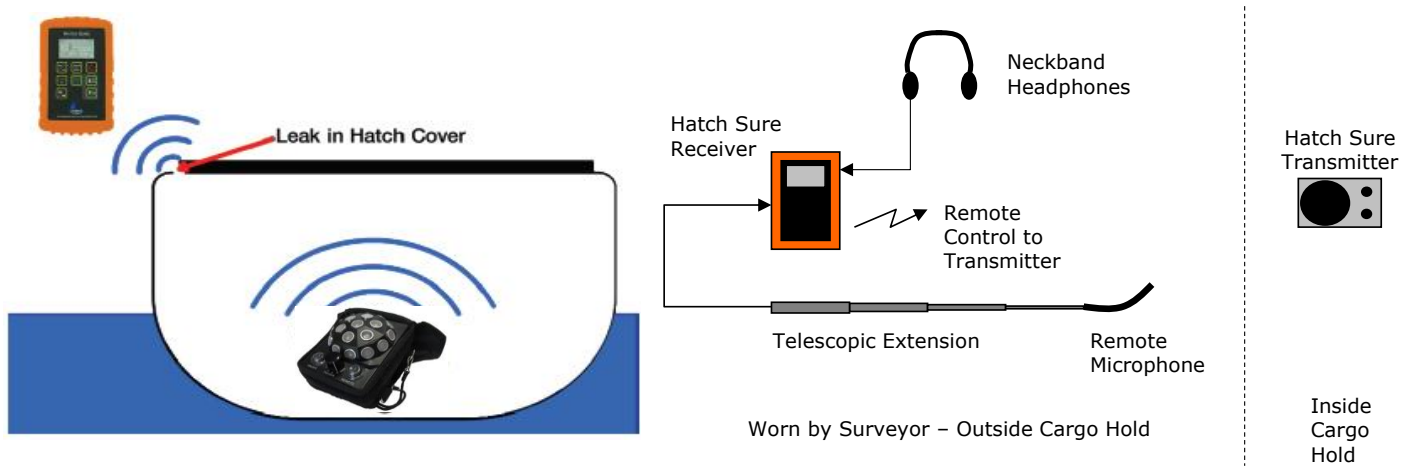
Cable Black RG58 for Remote Probes per metre	001-0435
Umbilical cable for DIVE / UW / ROV to Topside (per metre)	001-0415



# Cygnus HATCH SURE

## Ultrasonic Hatch Leak Detector

The Cygnus Hatch Sure is a lightweight ultrasonic system for checking the weather-tightness of cargo hatch covers. The system consists of a battery powered transmitter which produces an omni-directional sound field, uniformly distributed throughout the cargo hold. The receiver part of the system displays the sound energy level that passes through gaps in the enclosed cargo hold to enable the location of leaks in the hatch seals to be quickly and accurately identified. The system weighs only 3.8 kg and is supplied in a shower-proof, rucksack-style carry case.



Nato Stock No: 6635-99-614-0640

### Cygnus HATCH SURE Kit

Order Code

Cygnus HATCH SURE Hatch Cover Leak Detection System

006-1001

*Kit contents: Cygnus HATCH SURE receiver with protective case, neck and waist straps, 2 flexible inspection microphones, telescopic extension and cable for microphone, neck band headphones, variable output HATCH SURE transmitter with protective case and lowering harness, rechargeable batteries for transmitter and receiver, battery charger, external 9 - 24 V DC power lead for transmitter, operation manual, rucksack carry case.*



### General Spares for Cygnus HATCH SURE

Order Code

Hatch Sure Transmitter Unit	006-1010
Hatch Sure Receiver	006-1012
Inspection Microphone for Hatch Sure (235 x 10mm)	006-1020
Inspection Microphone for Hatch Sure (335 x 10mm)	006-1021
Microphone Cover for Hatch Sure Inspection Microphone	006-1018
Emergency Microphone Cable for Hatch Sure Receiver	006-1016
Telescopic Extension for Hatch Sure	006-1003
Tripod for use with Hatch Sure	006-1056
TX TriPod Bracket with Velcro	006-1054
BNC Straight Adapter for Hatch Sure Receiver	006-1017
Neckband Headphones for Hatch Sure	006-1004
Batteries 6 x AA NiMH MaxE for Hatch Sure Transmitter	006-1005
Battery PP3 NiMH Max-e for Hatch Sure Receiver	006-1006
Battery Charger KH980 for Hatch Sure Kit	006-1007
DC Power Lead for Hatch Sure Transmitter	006-1008
Orange Protective Boot for Hatch Sure Receiver	006-1013





## Ultrasonic Thickness Gauge Serial Numbers

### Cygnus 2 HANDS FREE

Mk1 produced up to serial no. 1309

Mk2 produced up to serial no. 2146

Mk3 produced from serial no. 2147 (Lemo 00 connector in gauge)

Mk4 produced from serial no. 4000 (Lemo 1 connector in gauge)

Mk5 produced from serial no. 20001 (C2 Lemo 1 connector in gauge & C2+ Twin Lemo 00 connector in gauge)

(There is some overlap between Mk1 and Mk2 and may need to be checked)

### Cygnus 3 DATA LOGGER

Mk1 produced up to serial no. 0512

Mk2 produced up to serial no. 0862

Mk3 produced from serial no. 0863 - 0959; 0100 - 0402 (Lemo 00 connector in gauge)

Mk4 produced from serial no. 4000 (Lemo 1 connector in gauge)

(There is some overlap between Mk1 and Mk2 and may need to be checked)

### Cygnus 4 GENERAL PURPOSE

Mk2 produced up to serial no. 0333

Mk3 produced from serial no. 0334 (Lemo 00 connector in gauge)

Mk4 produced from serial no. 4000 (Lemo 1 connector in gauge)

Mk5 produced from serial no. 20001 (C4 Lemo 1 connector in gauge & C4+ Twin Lemo 00 connector in gauge)

### Cygnus 6+ PRO

Mk5 produced from 20001 (C6+ Twin Lemo 00 connector in gauge)

### Cygnus 1 INTRINSICALLY SAFE

Mk1 produced up to serial no. 2125

Mk2 produced from serial no. 2170

Mk3 produced from serial no. 3232

(Serial nos. 2126 - 2169 may be either Mk1 or Mk 2 and will need to be checked)

### Cygnus HEAVY DUTY

Mk1 produced up to serial no. 2125

Mk2 produced from serial no. 2170

Mk3 produced from serial no. 3232

Mk4 produced from serial no. 4985

(Serial nos. 2126 - 2169 may be either Mk1 or Mk 2 and will need to be checked)

### Cygnus DIVE

Mk1 produced up to serial no. 10421

Mk2 produced from serial no. 11001

### Cygnus UNDERWATER

Mk1 produced up to serial no. 2125

Mk2 produced from serial no. 2170

Mk3 produced from serial no. 3232

Mk4 produced from serial no. 4985

(Serial nos. 2126 - 2169 may be either Mk1 or Mk 2 and will need to be checked)

### Cygnus ROV MOUNTABLE

Mk2 produced from serial no. 1

Mk3 produced from serial no. 50

Mk4 produced from serial no. 148

Mk5 produced from serial no. 500



---

**page 2 Cygnus 2 HANDS FREE**

	<i>Order Code</i>
Cygnus 2 UTG Kit	050-2000/5
Probe S2C Single 2.25MHz 13mm with BNC connector	004-9500
Probe S2D Single 2.25MHz 19mm with BNC connector	004-9502
Probe S3C Single 3.5MHz 13mm with BNC connector	004-9504
Probe S5C Single 5MHz 13mm with BNC connector	004-9508
Probe Lead Lemo 1 - BNC 1.4m (4'6")	004-0406
Probe S5A Single 5MHz 6mm with Single Lemo 00 connector	004-9507
Probe Lead Single Lemo 1 - Single Lemo 00 1.35 m (4'6")	004-0401
Right Angle Probe 2.25MHz 13mm (1/2") Lemo 1 (integral cable)	001-9387
Right Angle Probe 3.5MHz 13mm (1/2") Lemo 1 (integral cable)	001-9389
Right Angle Probe 5.0MHz 6mm (1/4") Lemo 1 (integral cable)	001-9390
Marinised Probe S2C 2.25MHz 13mm	002-9387
Marinised Probe S2D 2.25MHz 19mm	002-9388
Cable Heavy Duty Marinised Underwater priced per metre	001-0444
Cable Standard Marinised Underwater priced per metre	001-0434
Neck Strap with fixings for Mk5 gauges	050-0115
Hand Strap with fixing for Mk5 Gauges	050-0110
Belt Clip with fixing for Mk5 gauges	050-0100
Peli Carry Case for Cygnus 2, 2+ & 4 Mk5 Gauge Kit	050-4010/5

---

**page 3 Cygnus 2+ HANDS FREE**

	<i>Order Code</i>
Cygnus 2+ UTG Kit	050-2500/5
Probe S2C Single 2.25MHz 13mm with BNC connector	004-9500
Probe S2D Single 2.25MHz 19mm with BNC connector	004-9502
Probe S3C Single 3.5MHz 13mm with BNC connector	004-9504
Probe S5C Single 5MHz 13mm with BNC connector	004-9508
Probe Lead Twin Lemo 00 to BNC 1.35m (4'6")	004-0410
Probe S5A Single 5MHz 6mm with Single Lemo 00 connector	004-9507
Probe Lead Twin Lemo 00 to Single Lemo 00 1.4m (4'6")	004-0412
Probe T2C Twin 2MHz 13mm (1/2") with Twin Lemo 00 connector	004-9550
Probe T5B Twin 5MHz 8mm (1/3") with Twin Lemo 00 connector	004-9555
Probe Lead Twin Lemo 00 to Twin Lemo 00 1.35m (4'6")	004-0411
Probe T7A Twin 7.5MHz 5mm (3/6") integral cable Twin Lemo 00	004-9575
4 Step Steel Test Block, metric 2.5 - 20mm	001-4858
4 Step Steel Test Block, imperial 0.1 - 0.75 inch	001-4859
Marinised Probe S2C 2.25MHz 13mm	002-9387
Marinised Probe S2D 2.25MHz 19mm	002-9388
Marinised Probe S3C 3.5MHz 13mm	002-9389
Cable Heavy Duty Marinised Underwater priced per metre	001-0444
Cable Standard Marinised Underwater priced per metre	001-0434
Twin Lemo 00 to Single Lemo 1 adapter for Mk5 "+" models	050-0106
Neck Strap with fixings for Mk5 gauges	050-0115
Hand Strap with fixing for Mk5 Gauges	050-0110
Belt Clip with fixing for Mk5 gauges	050-0100
Peli Carry Case for Cygnus 2, 2+ & 4 Mk5 Gauge Kit	050-4010/5



---

**page 4 Cygnus 4 GENERAL PURPOSE**

	Order Code	
Cygnus 4 UTG kit	050-4000/5	€ 1,362.90
Probe S2C Single 2.25MHz 13mm with BNC connector	004-9500	
Probe S2D Single 2.25MHz 19mm with BNC connector	004-9502	
Probe S3C Single 3.5MHz 13mm with BNC connector	004-9504	
Probe S5C Single 5MHz 13mm with BNC connector	004-9508	
Probe Lead Lemo 1 - BNC 1.4m (4'6")	004-0406	
Probe S5A Single 5MHz 6mm with Single Lemo 00 connector	004-9507	
Probe Lead Single Lemo 1 - Single Lemo 00 1.35 m (4'6")	004-0401	
Right Angle Probe 2.25MHz 13mm (1/2") Lemo 1 (integral cable)	001-9387	
Right Angle Probe 3.5MHz 13mm (1/2") Lemo 1 (integral cable)	001-9389	
Right Angle Probe 5.0MHz 6mm (1/4") Lemo 1 (integral cable)	001-9390	
Marinised Probe S2C 2.25MHz 13mm	002-9387	
Marinised Probe S2D 2.25MHz 19mm	002-9388	
Cable Heavy Duty Marinised Underwater priced per metre	001-0444	
Cable Standard Marinised Underwater priced per metre	001-0434	
Neck Strap with fixings for Mk5 gauges	050-0115	
Hand Strap with fixing for Mk5 Gauges	050-0110	
Belt Clip with fixing for Mk5 gauges	050-0100	
Peli Carry Case for Cygnus 2, 2+ & 4 Mk5 Gauge Kit	050-4010/5	

---

**page 5 Cygnus 4+ GENERAL PURPOSE**

	Order Code	
Cygnus 4+ UTG Kit	050-4500/5	€ 1,893.90
Cygnus 4+ software upgrade for added data logging functions	050-4520	
Probe S2C Single 2.25MHz 13mm with BNC connector	004-9500	
Probe S2D Single 2.25MHz 19mm with BNC connector	004-9502	
Probe S3C Single 3.5MHz 13mm with BNC connector	004-9504	
Probe S5C Single 5MHz 13mm with BNC connector	004-9508	
Probe Lead Twin Lemo 00 to BNC 1.35m (4'6")	004-0410	
Probe S5A Single 5MHz 6mm with Single Lemo 00 connector	004-9507	
Probe Lead Twin Lemo 00 to Single Lemo 00 1.4m (4'6")	004-0412	
Probe T2C Twin 2MHz 13mm (1/2") with Twin Lemo 00 connector	004-9550	
Probe T5B Twin 5MHz 8mm (1/3") with Twin Lemo 00 connector	004-9555	
Probe Lead Twin Lemo 00 to Twin Lemo 00 1.35m (4'6")	004-0411	
Probe T7A Twin 7.5MHz 5mm (3/6") integral cable Twin Lemo 00	004-9575	
4 Step Steel Test Block, metric 2.5 - 20mm	001-4858	
4 Step Steel Test Block, imperial 0.1 - 0.75 inch	001-4859	
Marinised Probe S2C 2.25MHz 13mm	002-9387	
Marinised Probe S2D 2.25MHz 19mm	002-9388	
Marinised Probe S3C 3.5MHz 13mm	002-9389	
Cable Heavy Duty Marinised Underwater priced per metre	001-0444	
Cable Standard Marinised Underwater priced per metre	001-0434	
Twin Lemo 00 to Single Lemo 1 adapter for Mk5 "+" models	050-0106	
Mini USB cable for data transfer	050-0120	
Neck Strap with fixings for Mk5 gauges	050-0115	
Hand Strap with fixing for Mk5 Gauges	050-0110	
Belt Clip with fixing for Mk5 gauges	050-0100	
Peli Carry Case for Cygnus 4+ Mk5 Gauge Kit	050-4511/5	





---

**page 6 Cygnus 6+ PRO**

	<i>Order Code</i>
Cygnus 6+ Kit	050-6500/5
Probe S2C Single 2.25MHz 13mm with BNC connector	004-9500
Probe S2D Single 2.25MHz 19mm with BNC connector	004-9502
Probe S3C Single 3.5MHz 13mm with BNC connector	004-9504
Probe S5C Single 5MHz 13mm with BNC connector	004-9508
Probe Lead Twin Lemo 00 to BNC 1.35m (4'6")	004-0410
Probe S5A Single 5MHz 6mm with Single Lemo 00 connector	004-9507
Probe Lead Twin Lemo 00 to Single Lemo 00 1.4m (4'6")	004-0412
Probe T2C Twin 2MHz 13mm (1/2") with Twin Lemo 00 connector	004-9550
Probe T5B Twin 5MHz 8mm (1/3") with Twin Lemo 00 connector	004-9555
Probe Lead Twin Lemo 00 to Twin Lemo 00 1.35m (4'6")	004-0411
Probe T7A Twin 7.5MHz 5mm (3/6") integral cable Twin Lemo 00	004-9575
4 Step Steel Test Block, metric 2.5 - 20mm	001-4858
4 Step Steel Test Block, imperial 0.1 - 0.75 inch	001-4859
Marinised Probe S2C 2.25MHz 13mm	002-9387
Marinised Probe S2D 2.25MHz 19mm	002-9388
Marinised Probe S3C 3.5MHz 13mm	002-9389
Cable Heavy Duty Marinised Underwater priced per metre	001-0444
Cable Standard Marinised Underwater priced per metre	001-0434
Twin Lemo 00 to Single Lemo 1 adapter for Mk5 "+" models	050-0106
Mini USB cable for data transfer	050-0120
Bluetooth Adapter V4.0 USB Belkin	050-0125
Neck Strap with fixings for Mk5 gauges	050-0115
Hand Strap with fixing for Mk5 Gauges	050-0110
Belt Clip with fixing for Mk5 gauges	050-0100
Peli Carry Case for Cygnus 6+ Mk5 Gauge Kit	050-6511/5



---

**page 7 Cygnus 1 INTRINSICALLY SAFE ATEX**

	<i>Order Code</i>
Cygnus 1 INTRINSICALLY SAFE ATEX Kit with 2.25MHz 13mm Probe	001-7121/3
Cygnus 1 INTRINSICALLY SAFE ATEX Kit, without Probe	001-9921/3
Probe S2C 2.25 MHz 13 mm (1/2") for Cygnus 1 IS ATEX Mk 3	001-9412-ATEX
Probe S2D 2.25 MHz 19 mm (3/4") for Cygnus 1 IS ATEX Mk 3	001-9411-ATEX
Probe S3C 3.5 MHz 13 mm (1/2") for Cygnus 1 IS ATEX Mk 3	001-9413-ATEX
Probe S5C 5.0 MHz 13 mm (1/2") for Cygnus 1 IS ATEX Mk 3	001-9344-ATEX
Probe S5A 5.0 MHz 6 mm (1/4") for Cygnus 1 IS ATEX Mk 3	001-9345-ATEX
Right Angle Probe 2.25 MHz 13 mm for Cygnus 1 IS ATEX Mk 3	001-9403
Right Angle Probe 3.5 MHz 13 mm for Cygnus 1 IS ATEX Mk 3	001-9405
Right Angle Probe 5.0 MHz 6 mm for Cygnus 1 IS ATEX Mk 3	001-9406
Right Angle Probe 5.0 MHz 13 mm for Cygnus 1 IS ATEX Mk 3	001-9407
Battery for Cygnus 1 INTRINSICALLY SAFE ATEX Gauge Mk 3	001-1505-ATEX
Battery Charger for Cygnus UW / IS Mk 3/4 (UK Mains Plug)	001-1514
Battery Charger for Cygnus UW / IS Mk 3/4 (US Mains Plug)	001-1515
Battery Charger for Cygnus UW / IS Mk 3/4 (EU Mains Plug)	001-1516
Calibration Jumper Lead for Cygnus 1 IS, UW & HD Gauges	001-0410
Calibration Trim Tool	001-2600
Hex Key for Cygnus 1 INTRINSICALLY SAFE Gauge	001-2619
Nose Cone Torque Bar	001-2620
'O' Ring Pack for Cygnus 1 IS/ROV Gauges Mk 3/4	001-3713

---

**page 8 Cygnus HEAVY DUTY**

	<i>Order Code</i>
Cygnus HEAVY DUTY UTG Kit with 2.25MHz 13mm Probe	001-7111/4
Cygnus HEAVY DUTY UTG Kit, without Probe	001-9911/4
Probe S2C 2.25 MHz 13 mm (1/2") for Cygnus HEAVY DUTY	001-9330
Probe S2D 2.25 MHz 19 mm (3/4") for Cygnus HEAVY DUTY	001-9332
Probe S3C 3.5 MHz 13 mm (1/2") for Cygnus HEAVY DUTY	001-9355
Probe S5C 5.0 MHz 13 mm (1/2") for Cygnus HEAVY DUTY	001-9334
Probe S5A 5.0 MHz 6 mm (1/4") for Cygnus HEAVY DUTY	001-9336
Right Angle Probe 2.25 MHz 13 mm for Cygnus HEAVY DUTY	001-9367
Right Angle Probe 3.5 MHz 13 mm for Cygnus HEAVY DUTY	001-9369
Right Angle Probe 5.0 MHz 13 mm for Cygnus HEAVY DUTY	001-9371
Right Angle Probe 5.0 MHz 6 mm for Cygnus HEAVY DUTY	001-9370
Battery Insert Plate (3 x AA) for Cygnus HEAVY DUTY Mk 3/4	001-3723
Calibration Jumper Lead for Cygnus 1 IS, UW & HD Gauges	001-0410
Calibration Trim Tool	001-2600
Nose Cone Torque Bar	001-2620
'O' Ring Pack for Cygnus HD Gauge	001-3718



---

**pages 9-11 Cygnus DIVE**

	<i>Order Code</i>
Cygnus DIVE Mk2 UTG Kit with S2C 2.25 MHz 13 mm Probe	001-7210/2
Cygnus DIVE Mk2 UTG Kit, without Probe	001-7200/2
Cygnus Data Logging DIVE Mk2 UTG Kit with S2C Probe	001-7211/2
Cygnus Data Logging DIVE Mk2 UTG Kit, without Probe	001-7201/2
TOPSIDE REPEATER (TSR) Kit for Cygnus DIVE	001-7221/4
TOPSIDE REPEATER (TSR) Kit with Video OSD for Cygnus DIVE	001-7218/1
Surface computer logging feature for Cygnus DIVE	001-7220
Umbilical cable for DIVE / UW / ROV to Topside (per metre)	001-0415
Probe S2C Single Crystal 2.25 MHz 13 mm (1/2") for DIVE	001-7230
Probe S3C Single Crystal 3.5 MHz 13 mm (1/2") for DIVE	001-7231
Probe S5C Single Crystal Probe 5.0 MHz 13 mm (1/2") for DIVE	001-7232
Probe S5A Single Crystal 5.0 MHz 6 mm (1/4") for DIVE	001-7233
Probe T5B Twin Crystal 5 MHz 8 mm for Cygnus DIVE Mk2	001-7235
Probe T2C Twin Crystal 2 MHz 13 mm for Cygnus DIVE Mk2	001-7236
HelmetView MK2 Remote Display Kit	001-7224/2
Splitter Cable for Cygnus DIVE HelmetView & Surface Display	001-7270
CygLink Data Logging software upgrade for Cygnus DIVE	001-7219/2
Cygnus DIVE (Fischer) direct to computer (USB) Link Lead	001-7271
Umbilical (9-way D) to PC (USB) Link Lead for CygLink	001-7262
Umbilical (9-way D) to TSR Display Unit (Lemo) Link Lead	001-0426
Video Cables and Adapters for Topside Repeater with OSD	001-0442
Cygnus DIVE (Fischer)-(9-way D) topside umbilical connectors	001-7260
Cygnus DIVE Battery	001-7250
Battery Charger for Cygnus DIVE (UK Mains Plug)	001-7251-UK
Battery Charger for Cygnus DIVE (EU Mains Plug)	001-7251-EU
Battery Charger for Cygnus DIVE (US Mains Plug)	001-7251-US
Screen Protector for Cygnus DIVE	001-7263
Replacement Lanyard for Cygnus DIVE	001-7257
Operation Manual for Cygnus DIVE on USB Flash Drive	001-7256

---

**page 12 Cygnus UNDERWATER**

	<i>Order Code</i>
Cygnus UNDERWATER UTG Upgradeable Kit inc 2.25MHz 13mm Probe	001-7133/4
Cygnus UNDERWATER UTG Upgradeable Kit, without Probe	001-9933/4
Probe S2C 2.25MHz 13mm(1/2") for Cygnus Underwater/MINI ROV	001-9340
Probe S2D 2.25MHz 19mm(3/4") for Cygnus Underwater	001-9341
Probe S3C 3.5MHz 13mm(1/2") for Cygnus Underwater	001-9357
Probe S5C 5.0MHz 13mm(1/2") for Cygnus Underwater	001-9342
Probe S5A 5.0MHz 6mm(1/4") for Cygnus Underwater	001-9343
Fixed Head Probe 2.25MHz 13mm (1/2") for Cygnus Underwater	001-9320
Upgrade Kit 'A' (TSR) for Cygnus UNDERWATER	001-7133A
Upgrade Kit 'B' (CygLink) for Cygnus UNDERWATER	001-7133B
Umbilical cable for DIVE / UW / ROV to Topside (per metre)	001-0415
Battery for Cygnus UNDERWATER Gauges Mk 3/4	001-1504
Battery Charger for Cygnus UW / IS Mk 3/4 (UK Mains Plug)	001-1514
Battery Charger for Cygnus UW / IS Mk 3/4 (US Mains Plug)	001-1515
Battery Charger for Cygnus UW / IS Mk 3/4 (EU Mains Plug)	001-1516
Calibration Jumper Lead for Cygnus 1 IS, UW & HD Gauges	001-0410
'O' Ring Pack for Cygnus UNDERWATER Gauge	001-3711
Spares Kit for Cygnus UNDERWATER Gauge	001-3715
Impulse Connector 4-Way with Flying Lead	001-0418
Impulse Connector 4-Way Blanking Plug	001-0419
Isolated Data Converter (RS422/RS485 to USB)	001-8305
CygLink Software and Underwater Gauge Manual on USB stick	001-8210
Topside Interface Cable A (Lemo socket) to B (9-way D plug)	001-0416
Topside Interface Cable B (9-way D socket) to A (Lemo plug)	001-0417





---

**pages 13 & 14 Cygnus ROV MOUNTABLE 2000 m / 4000 m**

	<i>Order Code</i>
Cygnus M5-ROV-2K 2000m ROV UTG Kit with 2.25MHz 13mm Probe	001-7149/5
Cygnus M5-ROV-2K 2000m ROV UTG Kit, without Probe	001-9949/5
Cygnus M5-ROV-4K 4000m ROV UTG Kit with 2.25MHz 13mm Probe	001-7145/5
Cygnus M5-ROV-4K 4000m ROV UTG Kit, without Probe	001-9945/5
Probe S2C 2.25MHz 13mm for Cygnus ROV 2/4km (5m cable)	001-9393
Probe S2C 2.25MHz 13mm for Cygnus ROV 2/4km (cust length)	001-9394
Probe S2D 2.25MHz 19mm for Cygnus ROV 2/4km (5m cable)	001-9395
TOPSIDE REPEATER Kit with Video OSD for Cygnus ROV 2/4km	001-7183/4
Cygnus G1 Inspection ROV PROBE HANDLER, without Probe	001-8351
Cygnus S1 Hull Inspection ROV PROBE HANDLER, without Probe	001-8331
Cygnus W1 Work Class ROV PROBE HANDLER, less Probe & Handle	001-8311
Fishtail Manipulator Handle for Cygnus W1 PROBE HANDLER	001-8316
3/4" T-Bar Manipulator Handle for Cygnus W1 PROBE HANDLER	001-8314
1/2" T-Bar Manipulator Handle for Cygnus W1 PROBE HANDLER	001-8315
Probe S2C 2.25MHz 13mm for W1 & ROV MOUNTABLE 2/4km 5m Cable	001-8318
Probe S2C 2.25MHz 13mm for G1 & ROV MOUNTABLE 2/4km 1m Cable	001-8355
Probe S2C 2.25MHz 13mm for S1 & ROV MOUNTABLE 2/4km 1m Cable	001-8335
RS232 to USB Serial interface cable	003-0422
Isolated Data Converter RS422 to RS232 Model 'K3'	001-8308
CygLink Topside Data Logging Software for Cygnus M5-ROV	003-8213
Video Cables and Adapters for Topside Repeater with OSD	001-0442
Power & Data Connector for M5-ROV with flying lead	001-0431
Data Test & Power Cable RS232/422 for use with M5-ROV's	001-0439
Umbilical cable connectors for Mk5 ROV Mountable	001-7185
Spares kit for Cygnus ROV Mountable 2000m/4000m Gauges	001-3719

---

**page 15 Cygnus MINI ROV MOUNTABLE**

	<i>Order Code</i>
Cygnus MINI 500m ROV UTG Kit with 2.25 MHz 13 mm Probe	001-7144/4
Cygnus MINI ROV 500m UTG Kit, without Probe	001-9944/4
Probe S2C 2.25MHz 13mm(1/2") for Cygnus Underwater/MINI ROV	001-9340
Probe S2D 2.25MHz 19mm for Cygnus MINI ROV MOUNTABLE	003-9410
Cygnus G1 Inspection ROV PROBE HANDLER, without Probe	001-8351
Probe S2C 2.25MHz 13mm for G1 & MINI ROV (1m cable)	001-8354
Cygnus S1 Hull Inspection ROV PROBE HANDLER, without Probe	001-8331
Probe S2C 2.25MHz 13mm for S1 & MINI ROV (1m cable)	001-8334
TOPSIDE REPEATER Kit with Video OSD for Cygnus MINI ROV	001-7153/4
Videoray Mounting Brackets for Cygnus MINI ROV incl fittings	001-8307
Videoray Connection Cable (4-way Impulse to 9-way SubConn)	001-0433
'O' Ring Pack for Cygnus MINI /1km /3km ROV Mountable Gauges	001-3712
RS232 to USB Serial interface cable	003-0422
Isolated Data Converter RS422 to RS232 Model 'K3'	001-8308
CygLink Software & manual on USB for MINI ROV	001-8333
Impulse Connector 4-Way Blanking Plug	001-0419
Video Cables and Adapters for Topside Repeater with OSD	001-0442
Umbilical cable connectors for MINI ROV Mountable Gauge	001-7154



---

**page 17 Cygnus Leads**

	Order Code
Probe Lead Lemo 1 - BNC 1.4m (4'6")	004-0406
Probe Lead Twin Lemo 00 to BNC 1.35m (4'6")	004-0410
Probe Lead Single Lemo 1 - Single Lemo 00 1.35 m (4'6")	004-0401
Probe Lead : RG58 Lemo 1S to BNC 1.35m (4'6")	004-0405
Probe Lead Twin Lemo 00 to Twin Lemo 00 1.35m (4'6")	004-0411
Probe Lead Twin Lemo 00 to BNC 1.35m (4'6")	004-0410
Probe Lead Twin Lemo 00 to Single Lemo 00 1.4m (4'6")	004-0412

---

**page 18 Cygnus Membranes & Knurled Rings**

	Order Code
Pack of 20 Polyurethane Membranes for 19 mm (3/4") Probes	001-3700
Pack of 20 Polyurethane Membranes for 13 mm (1/2") Probes	001-3701
Pack of 20 Polyurethane Membranes for 6 mm (1/4") Probes	001-3702
Pack of 10 Teflon Membranes for 19 mm (3/4") Probes	001-4875
Pack of 10 Teflon Membranes for 13 mm (1/2") Probes	001-4874
Pack of 10 Teflon Membranes for 6 mm (1/4") Probes	001-4873
Knurled Ring Assembly for 19 mm (3/4") Probes	001-3705
Knurled Ring Assembly for 13 mm (1/2") INOX Probes	001-3709
Knurled Ring Assembly for 13 mm (1/2") Probes	001-3704
Knurled Ring Assembly for 6 mm (1/4") Probes	001-3703
Membrane Key for 19 mm (3/4") Probes	001-2610
Membrane Key for 13 mm (1/2") Probes	001-2611
Membrane Key for 6 mm (1/4") Probes	001-2612

---

**page 19 Cygnus Accessories**

	Order Code
UCA-2M UT Couplant Gel (1 litre tub)	001-3707
UCA-2M UT Couplant Gel (100 ml)	001-3708
Membrane Couplant 25 ml bottle	001-3706
Silicone Grease (50g Tube)	001-4861
Steel Test Block 15 mm	001-4850
Steel Test Block 1/2"	001-4851
Stainless Steel Test Block 15 mm	001-4854
Aluminium Test Block 15 mm	001-4857
3 Area Coated Test Block	001-4887
(Non discountable item)	
4 Step Steel Test Block, metric 2.5 - 20mm	001-4858
(Non discountable item)	
4 Step Steel Test Block, imperial 0.1 - 0.75 inch	001-4859
(Non discountable item)	
4 Step Steel Calibration Block, metric 2.5 - 20mm	001-4876
(Non discountable item)	
Supplied with a traceable calibration certificate	
4 Step Steel Calibration Block, imperial 0.1 - 0.75 inch	001-4877
(Non discountable item)	
Supplied with a traceable calibration certificate	
Carbon Steel Step Block 5-25 mm in 5 mm steps set in perspex	001-4856
Cygnus MECHANICAL PIT GAUGE	111-7165
Chipping/Boiler Scaling Hammer 1lb Ash Handle	500-0100
Carbide Edged Power Scraper	500-0101
Steel Wire Brush & Scraper	500-0102



---

**page 20 Probes for Cygnus Supported Products***Order Code*

---

Probe S2C 2.25 MHz 13 mm (1/2") with BNC - Lemo 1 cable	004-9310
Probe S2D 2.25 MHz 19mm (3/4") with BNC - Lemo 1 cable	004-9311
Probe S3C 3.5 MHz 13 mm (1/2") with BNC - Lemo 1 cable	004-9313
Probe S5A 5.0 MHz 6 mm (1/4") with Lemo 00 - Lemo 1 cable	004-9314
Probe S5C 5.0 MHz 13 mm (1/2") with BNC - Lemo 1 cable	004-9316
Probe 2.25MHz 13mm 1/2" BNC (Probe) - Lemo 00 (Gauge)	002-9306
Probe 2.25MHz 13mm 1/2" Lemo 00(Probe)-Lemo 00(Gauge)	001-9300
Probe 2.25MHz 19mm 3/4" BNC (Probe) - Lemo 00 (Gauge)	001-9304
Probe S3C 3.5MHz 13mm 1/2" Lemo 00Lemo 00	001-9350
Probe 5MHz 6mm 1/4" Lemo 00 (Probe) - Lemo 00 (Gauge)	001-9308
Probe 5MHz 13mm 1/2" BNC (Probe) - Lemo 00 (Gauge)	002-9317
Probe 5MHz 13mm 1/2" Lemo 00 (Probe) - Lemo 00(Gauge)	001-9305
Probe Lead : RG58 Lemo 00 to BNC (length 1.35m, 4'6")	001-0402
Probe Lead : RG58 Lemo 00 to Lemo 00 (length 1.35m, 4'6")	001-0400
Probe Lead : RG58 BNC to BNC (length 1.35m, 4'6")	002-0404
Probe Lead : RG58 (+ Choke) Lemo 00 to Lemo 00 (1.35m, 4'6")	001-0436
Probe 2.25MHz 13mm 1/2" BNC (Probe) - BNC (Gauge)	002-9302
Probe 2.25MHz 13mm 1/2" Lemo 00 (Probe) - BNC (Gauge)	002-9318
Probe 2.25MHz 19mm 3/4" BNC (Probe) - BNC (Gauge)	002-9303
Probe 3.5MHz 13mm 1/2" S3C BNC (Probe) - BNC (Gauge)	002-9351
Probe 5MHz 6mm 1/4" Lemo 00 (Probe) - BNC (Gauge)	002-9309
Probe 5MHz 13mm 1/2" BNC (Probe) - BNC (Gauge)	002-9307
Marinised Probe 2.25MHz 13mm 1/2" - Cyg 2,3,4 Lemo 00,no cable	001-9378
Marinised Probe 2.25MHz 19mm 3/4" Cyg 2,3,4 Lemo 00 no cable	001-9377
Marinised Probe 3.5MHz 13mm 1/2" - Cyg 2,3,4 Lemo 00, no cable	001-9379
Marinised Probe 5.0MHz 6mm 1/4" - Cyg 2,3,4 Lemo 00, no cable	001-9381
Marinised Probe 5.0MHz 13mm 1/2" - Cyg 2,3,4 Lemo 00, no cable	001-9380
Cable Standard Marinised Underwater priced per metre	001-0434
Probe 2.25MHz 13mm (1/2") for Cygnus 1 IS (Mk1,2)	001-9325
Probe 2.25MHz 19mm (3/4") for Cygnus 1 IS (Mk1,2)	001-9324
Probe 3.5MHz 13mm (1/2") for Cygnus 1 IS (Mk1,2)	001-9326
Probe 5.0MHz 6mm (1/4") for Cygnus 1 IS (Mk1,2)	001-9329
Probe 5.0MHz 13mm (1/2") for Cygnus 1 IS (Mk1,2)	001-9327
Right Angle Probe 2.25MHz 13mm(1/2") for Cygnus 1 IS (Mk1,2)	001-9372
Right Angle Probe 3.5MHz 13mm (1/2") for Cygnus 1 IS (Mk1,2)	001-9374
Right Angle Probe 5.0MHz 6mm (1/4") for Cygnus 1 IS (Mk1,2)	001-9375
Right Angle Probe 5.0MHz 13mm (1/2") for Cygnus 1 IS (Mk1,2)	001-9376
Probe 2.25MHz 13mm (1/2") for Cygnus ROV 1km/3km	003-9393
Probe 2.25MHz 19mm (3/4") for Cygnus ROV 1km/3km	003-9395
Probe 2.25MHz 13mm (1/2") 5m Cable for W1 (Nosecone)	001-8317



---

**page 21 Spare Parts for Cygnus Products**

	<i>Order Code</i>
Battery Terminals for Cygnus 2, 3 Gauges (Mk3)	002-3735
RS232 Data Cable for Cygnus 3 Data Logger (Mk3)	003-0423
Battery Cover with Screws for Cygnus 4 (Mk3)	004-3736
Battery Charger (UK) for Cygnus UW / IS Batteries (Mk1,2)	001-1520
Battery Charger (US) for Cygnus UW / IS Batteries (Mk1,2)	001-1521
Battery Charger (EU) for Cygnus UW / IS Batteries (Mk1,2)	001-1522
'O' Ring Pack for Cygnus HD & IS Gauges (Mk1/2)	001-3710
Battery (9 V) Case for Cygnus Heavy Duty (Mk1,2)	001-3720
Battery (9 V) Insert Plate for Cygnus Heavy Duty (Mk1,2)	001-3721
Battery Case (3 x AA) for Cygnus Heavy Duty (Mk3,4)	001-3722
Battery for Cygnus Underwater Gauges (Mk1,2)	001-1519
Lanyard for Cygnus UNDERWATER	001-4822
Silicone Grease (50g Tube)	001-4861
Cygnus UW (Impulse) to Topside Repeater (Lemo) Umbilical	001-0414
Cygnus UW (Impulse) to Topside PC (9D) Umbilical cable	001-0413
Test Cable - Impulse to 9 way 'D' Connector with DC Power	001-0432
Cygnus 2 HANDS FREE Mk5 Gauge Body only	050-2011/5
Cygnus 2+ HANDS FREE Mk5 Gauge Body only	050-2015/5
Cygnus 2 HANDS FREE Mk4 Gauge Body only	002-7173/4
Cygnus 3 DATA LOGGER Gauge Body only	003-7177/4
Cygnus 4 GENERAL PURPOSE Mk5 Gauge Body only	050-4011/5
Cygnus 4+ GENERAL PURPOSE Mk5 Gauge Body only	050-4015/5
Cygnus 4 GENERAL PURPOSE Gauge Mk4 Body only	004-7182/4
Cygnus 6+ PRO Mk5 Gauge body only	050-6011/5
Cygnus 1 INTRINSICALLY SAFE CSA Gauge Body only	001-7171-CSA/3
Cygnus 1 INTRINSICALLY SAFE ATEX Gauge Body only	001-7171-ATEX
Cygnus DIVE Underwater Thickness Gauge Mk2 Body only	001-7255/2
Cygnus DATA LOGGING DIVE UW Thickness Gauge Mk2 Body only	001-7259/2
Cygnus UNDERWATER Gauge Body only with TOPSIDE Connector	001-7179/4
Cygnus TOPSIDE REPEATER (Instrument Body)	001-7181/4
Cygnus HEAVY DUTY Gauge Body only	001-7170/4
Cygnus ROV Mountable 2000m UTG Gauge Body only	001-7189/5
Cygnus ROV Mountable 4000m UTG Gauge Body	001-7191/5
Cygnus MINI ROV Mountable UTG Gauge Body	001-7190/4
Soft Carry Case + foam for C2, 2+,4,4+,6+ Mk5 Gauge Kits	050-0105
2x fixings for neck strap for Cygnus 2,2+,4,4+,6+ Mk5 Gauges	050-0116
Soft Carry case + foam for Cygnus 2, 3, 4 Mk4 Gauges	002-4838
Silicone Sleeve for Cygnus 2 HANDS FREE Mk4 Gauge	002-4835
Silicone Sleeve for Cygnus 4 GENERAL PURPOSE Mk4 or TSR	004-4835
Belt Clip for Silicone Sleeve for Cygnus 2/3/4 Mk4 Gauges	002-4836/4
Neck strap for use with Cygnus 2/3/4 Mk4	002-4841
Cygnus 2/3 Mk3 Leather Case	002-4817
Leather Case for Cygnus 4 Mk 3	004-4804
Carry Case for Cygnus 4 Mk3/SE	004-4823
Fabric Accessories Pouch	002-4837/4
Hard Carry Case for Cygnus 1 IS and HD Gauge Kits	001-4800
Peli Carry Case for Cygnus 2, 2+ & 4 Mk5 Gauge Kit	050-4010/5
Peli Carry Case for Cygnus 4+ Mk5 Gauge Kit	050-4511/5
Peli Carry Case for Cygnus 6+ Mk5 Gauge Kit	050-6511/5
Peli Carry Case for Cygnus DIVE MK2 (Yellow)	001-7252/2
Peli Carry Case for Cygnus Underwater Gauge Kit (Yellow)	001-4813-UW
Peli Carry Case for Cygnus ROV Gauge Kit (Yellow)	001-4813-ROV
Ruck Sack Soft Carry Case for Hatch Sure Kit	006-1009
Protective Pouch with Sling for Hatch Sure Transmitter	006-1011
Protective Pouch for Hatch Sure Receiver	006-1014
Waist Strap for Hatch Sure Receiver	006-1015
Leather Instrument Case with Shoulder Strap for Sonaphone	009-7408
Cable Black RG58 for Remote Probes per metre	001-0435
Umbilical cable for DIVE / UW / ROV to Topside (per metre)	001-0415





---

**page 22 Cygnus HATCH SURE**

	<i>Order Code</i>
Cygnus HATCH SURE Hatch Cover Leak Detection System	006-1001
Hatch Sure Transmitter Unit	006-1010
Hatch Sure Receiver	006-1012
Inspection Microphone for Hatch Sure (235 x 10mm)	006-1020
Inspection Microphone for Hatch Sure (335 x 10mm)	006-1021
Microphone Cover for Hatch Sure Inspection Microphone	006-1018
Emergency Microphone Cable for Hatch Sure Receiver	006-1016
Telescopic Extension for Hatch Sure	006-1003
Tripod for use with Hatch Sure	006-1056
TX TriPod Bracket with Velcro	006-1054
BNC Straight Adapter for Hatch Sure Receiver	006-1017
Neckband Headphones for Hatch Sure	006-1004
Batteries 6 x AA NiMH MaxE for Hatch Sure Transmitter	006-1005
Battery PP3 NiMH Max-e for Hatch Sure Receiver	006-1006
Battery Charger KH980 for Hatch Sure Kit	006-1007
DC Power Lead for Hatch Sure Transmitter	006-1008
Orange Protective Boot for Hatch Sure Receiver	006-1013



